



Pushrod Cover and Seal for Evolution



11-0909
Installed

V-Twin Chrome Pushrod Cover Kits in stock style gives all the parts needed for complete installation. All are sixteen piece kits for 1984-90 Evo.
VT No. Finish
11-0909 Chrome
11-0359 Black
11-1090 Titanium



42-0903

Chrome Pushrod Cover Set with chrome tappet base covers as a complete dress up kit for 1984-99 Big Twin Evolution.
VT No. 42-0903



11-0909



Chrome Billet Pushrod Cover Kit fits 1984-99 Evolution models.
VT No. 11-0945

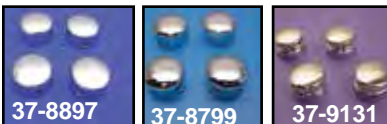


11-0359



Chrome Head and Spark Plug Cover fits 1986-99 Evolution models. Covers are held in place by rubber inserts supplied.
VT No. 42-0929

Head Bolt Cover Sets



37-8897



37-8799



37-9131

Chrome Head Bolt Covers fit Big Twin models.

VT No.	Type	Year
37-8897	Smooth	1983-84
37-9131	Grooved	1985-99
37-8799	Smooth	1985-99
42-1092	Brass	1985-99



42-1092



9001-4

Headbolt Covers fit over 12 point headbolts on 1986-99 Evolution models. Evolution styles include four pieces for left side only. Styles include hex acorn or cap with chrome finish. Allen wrench included.

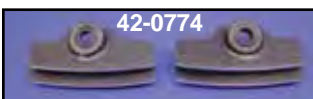
VT No.	Style
9000-4	Acorn
9002-4	Cap



42-0772



42-0773



42-0774

Head Lockers fit Big Twin Evolution 1340 available shot peened natural aluminum or black with highlighted fin edge. Sold in a pair with two set screws included to install.

Aluminum	Black	Year
42-0772	42-0774	1986-91
42-0773	—	1992-99



2262-4
Installed



2262-4



2024-4

Cam Head Bolt Cover for Evolution/Twin. Headbolt covers to hide dull 12 point headbolts on late 1985-up FL-FX. Installation with set screw.

VT No.	Style
2024-4	Hex Dome
2262-4	Spike



Chrome Head and Spark Plug Cover fits 1986-99 Evolution models. Covers are held in place by rubber inserts supplied.
VT No. 42-0929