



1984-99 Chrome Billet Pushrod Cover Kit includes all pieces and seals for complete installation on Evolution Big Twin models.
VT No. 11-0947

Pushrod Cover Components



11-0928



7508-20

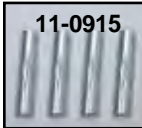


11-1206

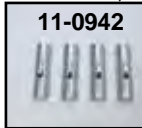
Replacement Chrome Upper Pushrod Cover Kits (Outer).

Each kit contains 4 chrome clips, 4 springs, 4 cork gaskets, and 4 steel washers.

VT No.	Brand	Fits
7508-20	Colony	Evolution
7508-20T	V-Twin	Evolution
11-0928	V-Twin	Evolution
9970-20	Colony	TC-88, 1999-up FXST, FLST, FXD, 99-16 FLT
11-1206	V-Twin	TC-88, 1999-up FXST, FLST, FXD, 99-16 FLT



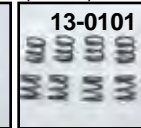
11-0915



11-0942



11-0917



13-0101



12-1157



15-0117



15-0116



11-0915

Pushrod Cover Individual Parts, in chrome steel.

VT No.	Model	U/M
11-0915	1966-99 BT Clip Stock	4
11-0942	1999-up TC-88 Clip	4
	99-up FXST, FLST, FXD, 99-16 FLT	
11-0917	1936-up Cup	4
13-0101	Spring	10
12-0711	Washer, Inner	10
12-1157	Washer, Lower, Evolution	20
15-0117	Large Cork	100
15-0116	Small Cork	100

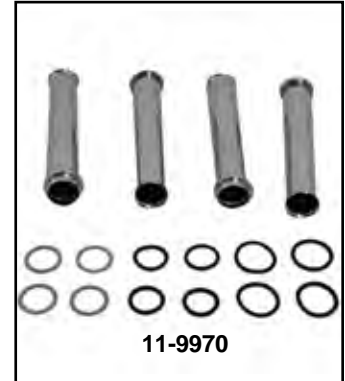


11-0913

Lower Pushrod Tube Sets.
Chrome Plated

VT No. Brand Fits

11-0913	V-Twin	1984-99 Evolution
9202-12	Colony	1984-99 Evolution
9968-12	Colony	TC-88; 1999-up FXST, FLST, FXD, 99-16 FLT
11-9970	V-Twin	TC-88; 1999-up FXST, FLST, FXD, 99-16 FLT



11-9970



11-0908

Inner Quad Pushrod Covers in zinc plated steel.

VT No. Brand

11-0908	V-Twin
9213-4	Colony
9969-4	Colony, TC-88
	99-up FXST, FLST, FXD, 99-16 FLT
11-9969	V-Twin, TC-88, As above



37-9078



37-9079



11-1073

Pushrod Cover Cups feature die-cast construction in chrome or gold, set of four.

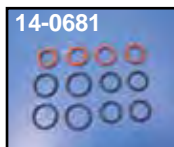
VT No.	Item
37-9078	Chrome Skull
37-9079	Gold Skull
11-1073	Brass Hex



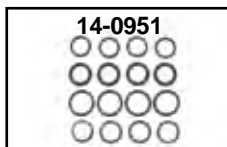
Pushrod Seal Kits



14-0671



14-0681



14-0951

Pushrod Cover Cork-Seal Kits include enough pieces to seal 4 complete pushrod covers on years listed. Rubber seals.

James	VT No.	Model/Year
14-0671	14-0951	1984-99 Big Twin 1340 Evolution
14-0686	14-0681	TC-88, 99-up FXST, FLST, FXD, 99-16 FLT



Pushrod Cover Rubber Seal Kit includes twelve (12) machined rubber seals for Big Twin Evolution. 1984-99.

VT No.	Type
9529-12	Black
14-0981	Blue



Blue Silicone Seals are lathe cut, then ground with perfect outside diameter finish, to withstand heat, oil and gas.

VT No.	Item	U/M
14-0028	Small Push Rod	50 pack
14-0029	Large Push Rod	50 pack



Pushrod Tube Quad Seals and O-Rings. Quad Seals feature four side seal design, 10 pack.

VT No.	Use	Type	Year	OEM
14-0550	Lower	O-Ring	1984-up	1145
14-0532	Upper	O-Ring	1984-98	1157
14-0803	Upper	O-Ring	1999-up	111293