



Primary Chain



BIG TWIN



Primary Chain. Made from select steel alloys that are light yet provide maximum strength. These primary chain has shot-peened, heavy-duty side plates and solid roller construction.

Diamond Endless Primary Chains

VT No.	Size	Year	Model
19-0361	428x2-76	1979-06	FLT-FXR
19-0368	428x2-74	1994-06	FLT
19-0360	428x2-82	1986-06	Softtail
		1991-05	FXD
19-0786	428x2-92	2007-up	Softtail
19-0583	428x2-86	2007-up	FLT

TYK	Diamond	Fits	Links
19-0878	—	1980-06 FLT	76
19-0876	—	1980-06 FXWG and FXST	82
19-0933	—	1980-06 FXWG and FXST	84
19-0835	19-0786	2007-up FXST	92
19-0836	19-0583	2007-up FLT	86
19-0837	—	1994-06 FLT	74

Replica Compensator Sprockets



1984-up Big Twin Compensator Engine Sprockets

VT No.	Teeth	Year	Type
19-0394	24	1985-93	FXR-FLT
		1991-93	FXST
19-0403	24	1984-90	FXST
19-0416	25	1994-01	All Big Twin
19-0585	27	1994-01	All Big Twin
19-0007	21	2002-06	Big Twin
19-0785	34	2007-up	FXST-FLST-FXD



Compensator Sprocket Kit includes all parts pictured with 24T sprocket.

VT No.	Fits
19-0300	1984-90 FXST
19-0301	1991-93 FXST
19-0102	1994-05 FXST Note: 25T
19-0584	2006-11 FXST-FLST-FXD, 2007-10 FLT
19-0923	2007-up FXST-FLST-FXD-FLT 30T, Solid Kit with primary chain
19-0586	30T Sprocket Only As Above



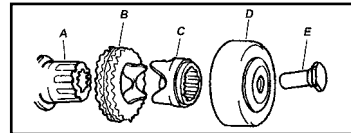
Spline Engine Sprockets fit 1955-up with spline.

VT No.	Teeth
19-0050	22
19-0051	23
19-0052	24
19-0053	25



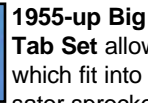
Big Twin Offset Motor Sprockets.

24T	25T	Offset
19-0135		1/4"
19-0104		3/4"
19-0105	19-0161	1"
19-0106	19-0162	1 1/4"
17-0945	17-0945	Nut Kit



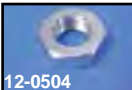
Compensator Sprocket Parts.

VT No.	#	OEM	Item	Year	Model
19-0394	B	40269-85A	Sprocket	1985-93	FXR-FLT
				1991-93	FXST-Dynaglide
19-0403	B	40275-83	Sprocket	1984-90	FXST
19-0416	B	40308-94	Sprocket	1994-01	Big Twin
19-0007	B	40327-02	Sprocket	2000-06	Big Twin
19-0395	C	40299-83A	Slide cam	1984-06	
19-0396	A	40266-85	Extension	1986-06	
19-0378	D	40384-83A	Retainer with cover	1984-90	
19-0405	D	40384-91	As Above	1991-06	
12-0506	E	40392-70	Nut	1970-90	
12-0578	E	40392-91	Nut	1991-06	
12-0630		3594	Plate	2007-up	
12-0998		37810-08B	Retainer	2008-up	



1955-up Big Twin Sprocket Nut and Lock Tab Set

allows locking of nut by utilizing 2 tabs which fit into sprocket holes when non-compensator sprocket is used.



VT No.	Item
17-0945	Kit
12-0504	Nut Only



Compensator Sprocket Motor Nuts.

VT No.	Year
12-0506	1970-90
12-0578	1991-06
12-1102	2007-up
12-1946	1970-90 (Chrome)



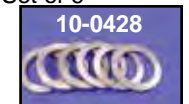
Compensator Sprocket Kit. Three piece design that eliminates spring and weight less than stock components. 34 tooth sprocket fits 2007-up FXST, FLST and FXD models.

VT No.	Type
19-0167	Kit
19-0171	Sifton Kit, 34 tooth
19-0175	34 tooth sprocket only
19-0586	30 tooth sprocket
12-1102	Bolt Set

Order Spacer and Shims separately for 1970-up.

VT No.	OEM	Size	Item
10-0427	24002-70		Spacer
10-0428	24032-70	.060"	Shim
	24033-70	.090"	Shim
	24034-70	.120"	Shim
	24035-70	.150"	Shim
	24036-70	.180"	Shim
	24037-70	.210"	Shim

Set of 6



VT No.	Item/Fits
19-0299	Heavy Duty
19-0682	Stock Kit

Compensator Sprocket Kit. 34 Tooth engineered with heavier springs and increased travel. Stock Replacement for 2012-16 FXST-FLST, 2012-13 FXD, 2011-13 FLT. Can also be used to upgrade 2007-11 FXST-FLST and 2006-11 FXD to late type compensator. Heavy Duty Kit is should be used for higher than stock horse power engines.