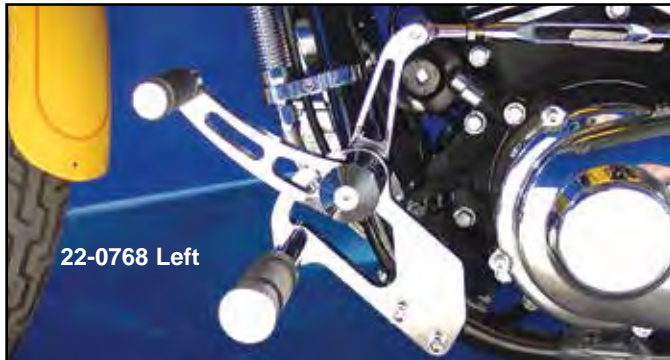




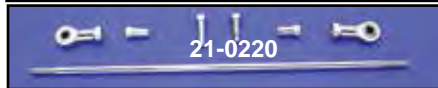
Billet Kit for FXD-FXDWG



22-0768 Right



22-0768 Left



21-0220



21-0222

Chrome Shift Shaft Cover has 1/2" inner diameter to fit over unused shifter shaft in primary cover when installing forward controls, sold each.

VT No.	Type
37-8872	Acorn
44-0047	Dome



28-0607

Matching Grip Set



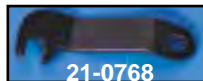
27-0615

Order matching grip and passenger set separately.

VT No.	Item
28-0607	Grips
27-0615	Peg Set



21-0766



21-0768

Mid Shift Lever Retainers will secure inner primary shift lever when installing forward controls.

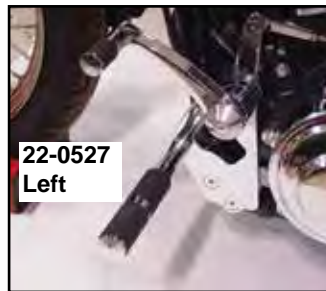
VT No.	Year
21-0766	1991-05
21-0768	2006-up



22-0756 Left



22-0756 Right



22-0527 Left



22-0527 Right

Chrome Billet Forward Control Set fits 1991-05 FXD includes rubber belted pegs as shown. Includes left and right sides complete with master cylinder. Order shift rod separately.

VT No.	Item	Style
22-0756	Control Set	Standard
22-0768	Control Set	+3"
22-0527	Control Set	+2"
21-0222	Shift Rod	Standard
21-0220	Shift Rod	+3"
23-3005	Master Cylinder	
23-0859	Rebuild Kit for 22-0756 and 22-0768	



Replacement Chrome End Cap Set fits brake and shift pivot ends.

VT No. 21-0543



Smooth Oval Inspection Cover

for primary covers features black satin finish. 1986-2006 FXDWG.

VT No. 42-1274



Oval Inspection Cover fits FXD-FXST outer primary when forward controls are used. Does not have a hole for shift shaft for 1991-05. Chrome.

VT No. 42-9927



Shift Shaft Primary Plug for use when forward controls are installed on FXR-FXD models to seal the inner primary when eliminating the mid shift. Includes O-Rings and hardware.

VT No. 17-0650