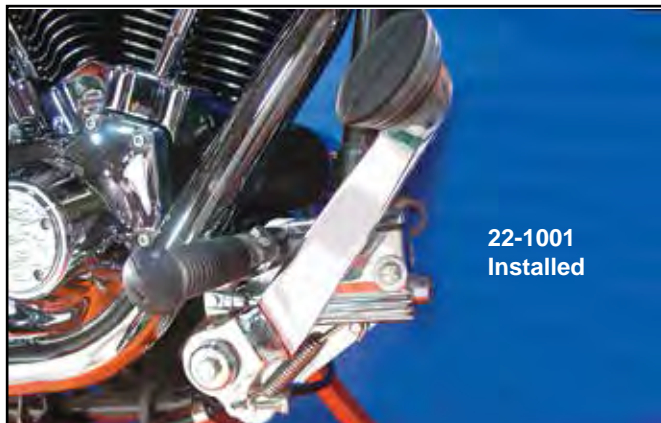
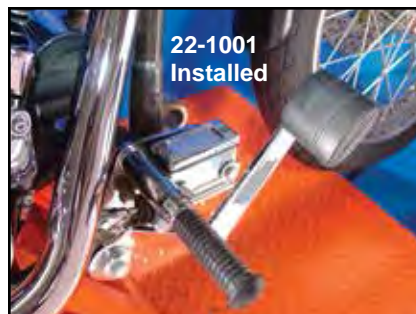




Brake Control Kit



22-1001
Installed



22-1001
Installed



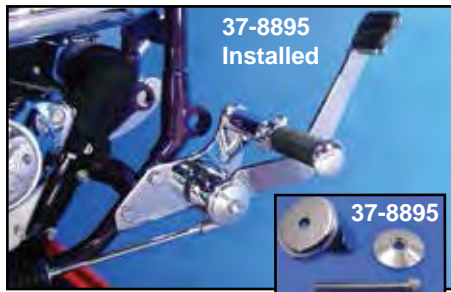
22-1054



22-1082
Installed

FXST Chrome Stock Style Brake Control Kits includes mounting bracket, lever and linkage. The 1982-86 type uses two bolt master cylinder. 1987-89 type has tab with square hole that uses spark plug. The 1990-up type fits models with frame mounted master cylinder. Master cylinder not included.

VT No.	Fits
22-1054	1984-Early 87 FXWG-FXST
22-1064	1987-89 FXST
22-1082	1990-99 FXST



37-8895
Installed

37-8895

Chrome Brake Lever Pivot Cover Kit fits 1984-99 FXST-FXWG. Includes cover, retainer washer and allen screw. Details this drab area.
VT No. 37-8895



Chrome Pedal will allow full use of the foot board as the pedal pad is moved to the edge of the board. Rubber pad is included. Fits 2000-01 FLST.
VT No. 23-0360



23-0244

Chrome Extended Brake Pedal constructed of chrome steel with 2 1/4" extension. Fits 1997-07 FLHT. Slotted.
VT No. 23-0244

FXST Replica Forward Brake Control for use on all 1970-99 Big Twin with Shovelhead or Evolution engines equipped with hydraulic disc or drum brakes. Designed after the 1984-99 FXST which places the driver peg in back of the brake pedal, so the brake is easier to operate from this comfortable position. Redesigned to accept a Wagner or Kelsey-Hayes style master cylinder or GMA masters, also available with chrome KH or Wagner style masters. Hardware includes linkage pedal mount plate, rubber covered footpeg. This kit is the exact compliment to our shifter kits listed on opposite page and when used with one of these kits, places the pegs in forward and raised position.

VT No.	Item
22-1066	Dual-use kit without Master Cylinder
22-1001*	Complete kit with Kelsey type Master Cylinder
22-1018*	Complete kit with Wagner type Master Cylinder
23-1743	Brake Pedal for Above
13-0181	Brake Pedal Spring

Note: Kits VT No. 22-1001 and 22-1018 use Russell stainless Lines VT No. 23-8809 front and 23-8802 from junction to rear caliper. Use tee VT No. 23-0707.

Everything You Need To Convert Hydraulic Brakes To Forward Control

Pedal Rubbers



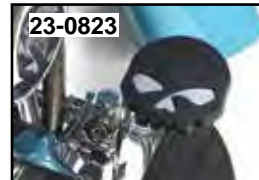
28-0548



23-0466

Brake Pedal Rubber to fit 1980-up FXWG, 1981-up FXST.

VT No.	Type	Model	Style
28-0791	Slip on	FXDWG	
23-0466	Bolt	1984-up FXST	Flame



23-0823



Front

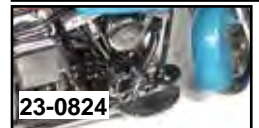
23-0823
Back

Front

23-0824
Back

Skull Pedal Pad is constructed of neoprene. Sold each.

VT No.	Type
23-0823	FXST
23-0824	FLST-FLH



23-0824

Extended Foot Brake Pedal.

VT No.	Style
23-0241	Smooth, 2 1/4"
23-0243	3-Slot, 2 1/4"
23-0245	3-Slot