



2000-07 Chrome Front Caliper Kit



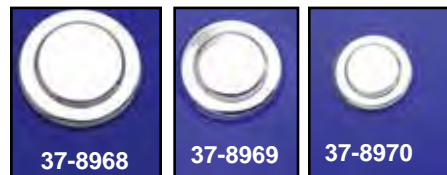
Chrome Front Caliper and Brake Disc Kit fits 2000-07 models. Kit includes a complete chrome replica 4-piston caliper assembly with pads, polished stainless steel drilled disc and chrome mounting bolts.

VT No.	Model
23-0561	FXST
23-0562	FXD



2000-07 Front Caliper are 4 piston type including all internal components. 23-0554 features smooth face.

VT No.	OEM	Side	Finish
23-0554	44046-00	Left	Chrome
23-0529	44046-00	Left	Black
23-0580	44025-00	Right	Chrome
23-0581	Set	Right and Left	Chrome



Chrome Brake Caliper Inserts are easily installed with double face tape supplied. Sold each.

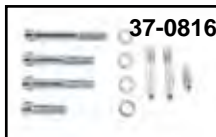
VT No.	Dia	Fits	Type
37-8968	1.80"	1987-99	Hayes Rear
37-8969	1.47"	1984-99	Front
37-8970	1.40"	1982-Early87	Girling Rear



Caliper fits 2008-up FXST-FLST
VT No. Finish Fits Side
23-0499 Chrome 2008-10 Left
23-1107 Black 2011-up Left
23-1108 Chrome 2011-up



2000-07 Left Chrome Front Caliper Cover.
VT No. Model
42-0844 FXD
42-0848 FXST, FXDWG



Front Chrome Brake Disc Caliper Mount Bolt Kit fits all 2000-up Big Twin models.
VT No. Brand
37-0816 Dura
2080-4 Colony

Dual Disc Caliper Set fits 2008-up FLT Touring models. Right and left.

VT No. 23-1712



Edart Chrome Billet Front Brake Caliper features a four piston differential bore. Includes brake pads. Fits 2000-07 FXST.

VT No. 23-1039



Polished Stainless Steel Front 11.53" Brake Disc with 18-spoke design. For use with custom aftermarket calipers only.

*Note: .030 oversize.
VT No. 23-1540

Caliper Thread Chart	
OEM Calipers	
Front: All 1984-2002 Single Disc Calipers	3/8-24 banjo bolt
Rear: All Late 1987-2002 Big Twin, TC/B, XL	3/8-24 banjo bolt
Front: All 1984-2002 Dual Disc Calipers	3/8-24 banjo bolt
Rear: 1982-Early 87 FXR, XL; 84-Early 87 FXST; 83-86 FXWG	3/8-24 banjo bolt
Front: 1977-83 FX, FXWG, FXR, XL	3/8-24 Inverted Flare
Banana Caliper 1973-83 FL, FX, XL	1/8 NPT
OEM-Handlebar Master Cylinders	
11/16" bore, 1985-95 Dual Disc Models	7/16"-24 banjo bolt
5/8" bore, 1985-95 Single Disc Models	3/8-24 banjo bolt
3/4" bore, 1982-84 Dual Disc Models	3/8-24 banjo bolt
11/16" Bore, 1982-2002 Dual Disc Models	3/8-24 banjo bolt
	1972-81 FL, FX, XL
	1/8 NPT