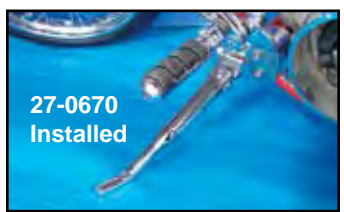




**Custom Kickstand Assembly** features full forged construction with chrome smooth contour design, including recessed mount screws for 1936-99 Big Twin, 4-Speed, 1984-up Softail models. Stock length.  
**VT No. 27-0253**



27-0670  
Installed



Hidden Spring!



27-0670 features adjustable leg



**Wyatt Gatling Big Twin Kickstand Assembly** features adjustable leg and hidden spring. Mounting is by 3 bolts on left front frame boss. Fits 1984-99 FXST. **VT No. 27-0670**

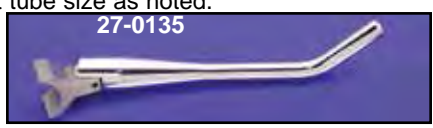
## Weld On Stands



27-0133

**Weld On Kickstand Assemblies** feature chrome stand with hidden spring. Units fit tube size as noted.

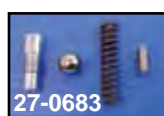
VT No.	Size
27-0133	1 1/8"
27-0134	1 1/4"
27-1785	1 3/8"
27-0135	1 1/2"
27-0136	2"
27-0140	Stand Only
27-0683	Spring Kit



27-0135



27-0140



27-0683

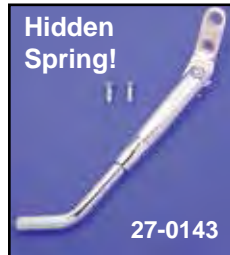


**Weld On Kickstand Assembly** includes weld on type heavy duty mount, chrome spring and chrome kick stand with forged flat end.  
**VT No. 27-0257**

## Custom Kickstand



**1980-99 WG-FXST Kickstand Assembly** features chrome steel construction with hidden spring mechanism.  
**VT No. 27-0254**



Hidden Spring!

27-0143



27-0144



27-0144 installed



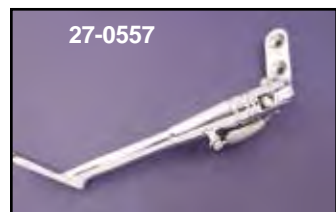
27-0145

**Chrome Adjustable Hidden Spring Kickstands** mount to years listed with twos bolts.

VT No.	Years	Model
27-0143	1988-99	Softail
27-0144	2000-up	Softail
27-0145	1982-94	FXR



27-0515



27-0557

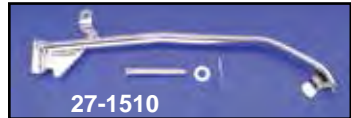


27-0552

**Chrome Custom Kickstand Kit** fits 2-bolt mounting. Unit includes stand, spring, mount and tapered bolts. 27-0552 features hidden spring.

VT No.	Years	Models
27-0515	1986-99	Softail
27-0557	1986-99	Softail
27-0552	1986-99	Softail

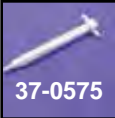
## FXR



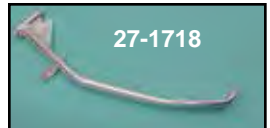
27-1510



37-9118



37-0575



27-1718



13-0154



13-9162

**Chrome Kickstands and Components** for FXR-FXR-S-FXLR

VT No.	Year	Item
27-1510	1982-90	Kickstand
37-9118	1982-90	Kickstand Pin
27-1718	1991-94	Kickstand
37-0575	1991-94	Kickstand Pin
13-0154	1982-90	Kickstand Spring, Chrome
13-9162	1991-94	Kickstand Spring, Chrome