



Chrome Die Cast Fender Tips fit 1997-up FLSTS.

VT No. Fits

50-0681 Front

50-0682 Rear

50-1214 Set (Front and Rear)



Lower Front Fender Trim includes screws except 50-1133 and 50-1015. Fits 1986-up FLST and 1980-13 FLT.

Chrome	Black	Type
50-1015		Smooth
50-1066		Ribbed
50-1220	50-1221	Ribbed, Note: 2014-up FLT
50-1132		Flamed
50-1133		Plain
37-1508		Screw Kit



Chrome Eagle with Chrome Tip	Gold Eagle with Chrome Tip	Chrome Eagle with Black Tip	Gold Eagle with Black Tip	Style
50-1587	50-1588	50-1589	50-1590	Front
50-1591	50-1592	50-1593	50-1594	Rear

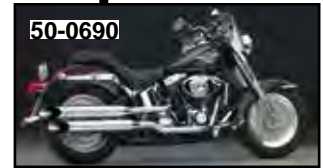
Chrome Tip with Black Skull	Black Tip with Chrome Skull	Style
50-1569	50-1570	Front
50-1571	50-1572	Rear



Replica Fender Side Trim Set fits 1982-up FLT, 1986-up FLST.

VT No.	Item	Finish
50-0957	Side Strips	Stainless
50-0531	Side Strips	Chrome
37-8784	T-Bolts	

Fender Tip



Chrome National Tips. ***Note:** All are chrome cast excepted where noted.

VT No. Fits

50-0690 Front front 2002-13 XL, 1980-85 FXWG, and front back 1984-13 FXST, 1983 FXDG

50-0693 Rear 2001-06 FLST

50-0696 Rear 2007-13 FLST

50-0697 Rear 2004-07 FLH

50-0698 Rear 2006-12 FXST

50-0711* Rear 1990-97 FLSTF, 1997-05 FLSTS

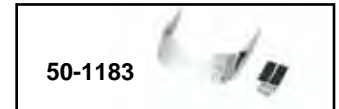


Chrome Smooth Fender Tips fit FLSTF models.

VT No. Type Size

50-1118 Front 6½"

50-1119 Rear 8"

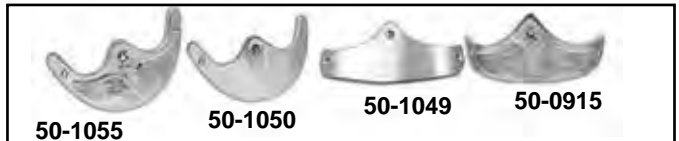


Rear Fender Tips fit 2007-up FLSTF.

VT No. Type

50-1182 Smooth

50-1183 Ribbed



Chrome Front Fender Tips is stamped or smooth. Includes screws. Fits fender width as noted.

VT No. Style Width Type

50-1055 Eagle 4" FXWG-FXST

50-1050 Smooth 4" FXWG-FXST

50-1049 Smooth 5" FX

50-0915 Eagle 5" FX



Front Fender Lower Trim fits 2014-up FLH.

Chrome Black Type

50-1545 50-1548 Smooth

50-1546 50-1549 Flame