

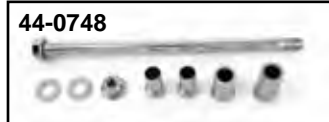


2000-up Softail Rear Swingarm



Rear Frame Chrome Section. Order pivot kit separately.
For 2000-05 FXST and 2000-07 FLST

VT No.	OEM	Finish	Brand
51-0978	48442-00	Chrome	V-Twin
For 2006-07 FXST			
44-0588	Pivot Kit	Chrome	V-Twin
For 2008-up FLSTF			
51-0848	47573-08	Black	OE



Chrome Softail Pivot Assembly includes shaft, nut and spacers.

VT No.	Item	Year
44-0739	Flush Mount Shaft	2000-06
44-0588	Complete Kit	2000-06
44-0726	Shaft Kit	2000-06
44-0748	Shaft Kit	2008-up



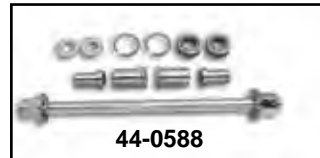
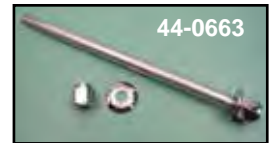
Chrome Plated Rear Fender Strut Mounting Kit is a unique low profile allen hardware kits used to mount struts to fender. Fits FX and FL Softail 2000-up except FX Deuce.
VT No. 2043-26

Chrome Rear Swingarm & Shock Assembly



Chrome Rear Swingarm and Shock Assembly fits Softail models. Includes chrome tail section, adjustable shocks with 1" lowering capability, chrome axis tube with tapered allen screws and chrome shock mount bolts.

VT No.	Year
51-0651	1986-99
51-0652	2000-05



2000-up Swingarm Hardware.

VT No.	OEM	Item
44-0608	47610-00	Chrome Pivot Shaft
44-0623	45048-00	Bushing, pair
44-0624	48049-00	Spacer, pair, 2000-06
44-0625	9270	Bearing Only, 2000-up
44-0588	—	Rear Pivot Kit
44-0663	47119-02	Pivot Kit
44-0626	11282	Retaining Ring
44-0627	6535	Left Side Pivot Washer
44-0629	6534	Right Side Pivot Washer
42-0686	43462-00	Dome Cover Set
37-0960	7479	Nut Only



Softail Rubber Bumper for 2000-up replaces 11514.
VT No. 28-0587



Pivot Spacer Sets fit Softail models (4 piece).
VT No. Year Finish
44-0710 2000-06 Zinc
44-0712 2007 Zinc
44-0711 2008-up Zinc



FXST-FLST Rear Fender Extension to replace stock plastic extension. Flat panel design for 2000-10.
VT No. Finish Year
50-0517 Stainless 2000-07
50-0518 Chrome 2000-07
50-0522 Stainless 2008-10



Upper Swingarm Covers fit 2001-07 Softail models. Bolt on to cover welded area.
VT No. 42-0378

Skid Plate



Steel Skid Plates replace 24490-36. Fit 1936-99 Big Twins.

VT No	Finish
42-0101	Chrome
42-0098	Stainless
42-0117	Black
42-0777	Chrome