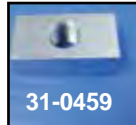




Steel Top Engine Mount

BIG TWIN



1984-99 FXST-FLST Chrome Mounts.

- VT No. Item**
31-0219 Mount Kit
31-0628 Cross Strap
31-1052 Mount Set
31-0459 Mount Block
2853-6 Mount Kit



Chrome Engine Mount Set fits 1984-99 Big Twin Evolution is a two piece design and features tab to mount coil.

VT No. Type

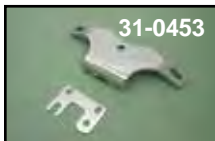
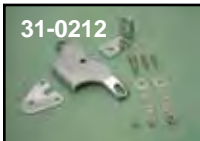
- 31-0657** 2 pc
31-1265*2 pc

*Note: With choke switch bracket.



Chrome Three Piece Top Mount Kit for 1992-99 FXST-FLST, 2000-05 Softail and FLT includes choke mount.

VT No. 31-0560



Chrome Heavy Duty Two Piece Top Engine Mounts are constructed of 1/4" thick steel. FXST-FXR models include horn and choke mount. Mounts have provision to direct mount two bolt ignition coils. **Note:** Fits Shovelhead or Panhead motor in Evolution Style Frame

VT No.	Year	Model
31-0212	1984-99	FXST-FLST
31-0453	1984-94	FXR



Chrome Rectifier-Regulator Bracket Mount fits 1976-86 FX-FL. Replaces 74533-75B.
VT No. 31-0168



Billet Top Mount



Coil not included.

Chrome Top Motor Mount with Integral Coil Mount provides a coil mounting that is up and behind the normal top motor mount. Mounts coil between cylinders for use with coils with central terminals such as VT No. 32-0747 spacing required for proper installation. Mounts a style of coil as shown. For Twin Cam and most Evolution coil applications, spacing maybe be required. Use cover 42-0962.

VT No. For Motors

31-0747	80-100"
31-0746	101" and up
32-0747	Coil