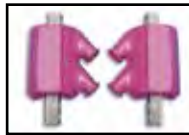




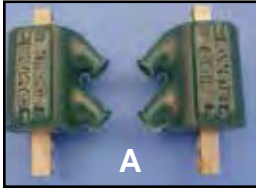
32-0484



32-0589

V-T Angle Coil Sets are 3 Ohm Type.

VT No.	Fire	Ohm
32-0484	Single	3
32-0589	Dual	3



A



32-8055



32-7792

DYNA

Dyna
DC6-5 All FXR-FXST and Dynaglide models
DC6-4 Dual Spark Plug Head Application

Dyna Coils. 35,000 volt! Works with all points ignitions, aftermarket or factory electronic ignitions. Note: 32-7792 is electronic, 32-7793 is for points ignition.

VT No.	#	Volt	Ohm	Dyna	Type	U/M
32-7789	A	12V	3	DC-1	Angle, Dual	Pair
32-7790	A	6V	1½	DC-2	Angle, Dual	Pair

Use 2 for dual plug heads

32-7792	C	12V	3	DC-6	Stock, Dual	Each
32-7793*	C	12V	5	DC-7	Stock, Dual	Each
32-8055	B	12V	3	DC-3	Angle, Single	Pair
32-8086	A	12V	5	DC-8	Angle, Dual	Pair
32-9035	B	12V	5	DC-10-1	Angle, Single	Pair

*Note: Use 2 for single fire ignition.



Twin Tec 3 Ohm Single Fire Mini Coil Kit features compact design 2.4" x 2.3" x 1.6" (not including terminals and tower) and is compatible with most single fire ignition systems. Kit includes two coils, universal wire set and terminal ends.

VT No. 32-1015

Single Fire: Just the spark plug for the piston that is in its compression stroke will be fired. The other piston, being in its overlap position will not be ignited.
Dual Fire: Both spark plugs are fired simultaneously at the time only one piston is in its compression stroke. This is the way the stock motor works on pre TC-88 engines.
Single Plug: One spark plug in each head. Total of 2 spark plugs in one engine.
Dual Plug: Two spark plugs in each head. Total of 4 spark plugs in one engine.



Ignition Coil



32-0467



32-0474



32-0484

V-Tech™ Single Fire Coils features 45 kv with 1 spark for each cylinder as fired and will mount to stock bracket and accept stock type coil covers. Works with most aftermarket single fire ignition systems.

1. Volt wire from ignition switch is connected to center post along with red wire from ignition.

2. Connect the black wire to outer post from front cylinder.

3. Connect the white wire to other outer post for rear cylinder.

VT No. **Finish**

32-0467 Black

32-0474 Chrome

32-0484 Orange



45 KV Coil Kit includes coil and cover. To mount on stock 1984-99 Softail.

VT No. 32-0749



32-9285



32-9264

Dyna Twin Fire Ignition Coils

are designed to work with Dyna 2000 HD-I ignition modules. Twin

fire coils are slightly larger than stock coils and fit the stock mounting bracket. Twin fire coils can be used with any electric advance ignition system that incorporates dwell control, except Dyna DS6-2 or similar type ignitions.

VT No. **Dyna** **Ohms/Type**

32-9285 DC6-5 3 (A)Twin Fire II Miniature Dual Output Towers, Replaces DC6-3

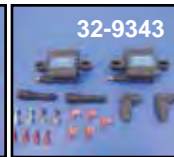
32-9264 DC6-4 3 (B) Four output towers Fits Dual Spark Plug



32-9341



32-9342



32-9343



32-9344

Dyna 0.5 Ohms Miniature Coils for TC-88. These coils are designed for use with Dynaglide TC-88 series ignitions and should not be used with Dyna S Ignition Systems. TC-88 mini-coils feature dual or single output towers, .5 ohms primary resistance, measure 4.2" x 2.3" x 1.6", mounting centers of 2.9" minimum to 3.5" max and black housing.

VT No. **Output Type** **U/M** **Dyna#**

32-9341 Dual Pair DC11-1

32-9342 Dual Each DC11-2

32-9343 Single Pair DC12-1

32-9344 Single Each DC12-2



Important Note: Some items on this page may be emission-related parts subject to California or other emission control laws. Please see note on page 71 for important information regarding emission control regulatory compliance and warranty information.

