



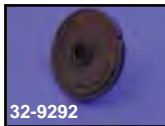
**Unilite Breakerless Ignition System** for all 1970-99 Twins. Dual fire unilite module features integrated photo coupler, signal processor and power switch. Requires mechanical advance assembly and ignition coil with 3.0 to 4.0 ohms.

- VT No. Item**  
**32-5119** Ignition System  
**32-7510** Mechanical Advance



**Crane Hi-4** fits all 1970-98 carbureted models and requires sensor cup for 1982 and earlier applications. Order tachometer interface, sensor cup and screw separately if required. **Note: Order Coils Listed Below**

- VT No. Fits**  
**32-0588** 8.5 mm Wire Set  
**32-9087** Sensor Cup, replaces 32402-83  
**32-9052** Cup Screw, replaces 2611C



**Crane Cams Hi-Intensity Ignition System** converts early, points type 1970-79 Big Twin to electronic ignition. On 1980 and later models it will replace stock electronic ignition, external module and rev limiter. Kit includes Hi module stand off screws and hardware. Order VT No. 32-7510 advance weight unit separately.

- VT No. Item**  
 Single module/dual fire/single coil for a dual fire ignition system that replaces the stock point and condenser type ignition. Can be used with stock coil.  
**32-9291** Rotor for above  
 Dual module/single fire/single or dual coil when being used as single fire/single plug requires a coil. When used as dual plug applications VT No. 32-9225 coil must be used.  
**32-9292** Rotor for above  
**32-7510** Advance unit



**Crane Coils** are available in high intensity for dual fire and mount to stock brackets.  
**VT No. 32-9225**

**Single Fire:** Just the spark plug for the piston that is in its compression stroke will be fired. The other piston, being in its overlap position will not be ignited.  
**Dual Fire:** Both spark plugs are fired simultaneously at the time only one piston is in its compression stroke.  
 This is the way the stock engine works on preTC-88 motors.  
**Single Plug:** One spark plug in each head. Total of 2 spark plugs in one engine.  
**Dual Plug:** Two spark plugs in each head. Total of 4 spark plugs in one engine.

# Carb Models Ignition Module



**Accel Single/Dual Fire Ignition Module.** Fits all carbureted 1970-2000(except TC-88) and all 1971-up Sportster models, works in both single or dual fire applications and features 14 tuneable advance curves from stock to full performance, adjustable rev limiter, VOES input, tachometer output and front cylinder static time LED. Requires sensor cup for installation.

- VT No. Item**  
**32-0091** Accel Single/Dual Fire Ignition Module  
**32-9087** Sensor Cup



## S&S Spark Technology Ignition System

features an ECU module that will automatically adjust ignition timing. When detonation is detected by knock sensor, the ECU retards the ignition timing to prevent engine damage. When detonation is not present, ignition timing is advanced for maximum power and economy. Additional features include: Simple installation--plugs into stock harness. No timing adjustments, 7000 RPM rev limiter, single fire operation, automatic dwell adjust, short circuit and reverse polarity protected.

### Installation Kit for carbureted models

- 32-7805** 2004-2006 TC-88  
**32-1012** 1999-2003 TC-88  
**32-1049** 1995-1999 Evolution Big Twins



### Crane HI4TC Ignition for TC88

**Carbureted Engine Modes** offers multi-spark performance, variable advance curves, and a digital rev limiter. It is a plug-in replacement of the stock module and is compatible with the factory security system. A crankshaft position sensor is employed to establish accurate firing. Rear cylinder timing can be offset from -5° to +4°; the same for initial timing. Both are easily adjusted by means of rotary switch on the unit. An additional rotary switch is used to select the advance curve, with choice of ten families. This enables the ignition to optimize the performance potential of the Twin-Cam 88® in any stage, from stock to wildly modified. Rotary switches also control the built-in Sequential Rev Limiter, which is adjustable from 1,500 to 9,900 RPM, and won't cause "popping and banging" like conventional rev limiters. Benefits of multiple spark system include easier starting (hot or cold), better low speed driveability and off-idle response. It pulses up to nine sparks per cycle at idle and three sparks up to 6,000 RPM, which also stops spark plug fouling and lean-surge. Fits 2004-up.

**VT No. 32-3180**

**Note:** When using HI-4 Single Fire Ignition with "Dual Plug Cylinder Heads", two dual fire coils must be used (Crane Cams #8-3002 or 8-3006). Both the spark plug wires from one coil will go to the front cylinder, while both plug wire from the other coil will go to the rear cylinder.



**Important Note:** Some items on this page may be emission-related parts subject to California or other emission control laws. Please see note on page 71 for important information regarding emission control regulatory compliance and warranty information.

