



Breather Kit



Air Cleaner Breather Manifold Kits to fit custom air cleaners to engines with the internal breathing system. Kit includes chrome breather manifold, chrome banjo bolts, chrome air cleaner support brackets, gaskets and instructions.

VT No.	Item	Year/Fits
35-9254	Kit	1993-99 Big Twin Round
31-0430	Kit	1993-15 FXST, FLST, 1993-07 FLT, 1993-up FXD
35-0670	Tube Only	1993-15 FXST, FLST, 1993-07 FLT, 1993-up FXD
35-0731	Pair	Banjo Bolt only, 1992-99 Evolution
35-0732	Pair	Banjo Bolt only, 1999-07 TC-88
14-0975	For Above	O-Ring



Breather Washer Set fits 1993-up Big Twin, 1991-up XL models.
VT No. 35-0755



Chrome Air Cleaner Bracket for Evolution Big Twin mounts to boss on engine heads to support custom air cleaners.

VT No.	Year
31-4041	1984-89
31-4191	1984-89 with choke bracket
31-3962	1990-92 CV
31-0750*	1993-15 FXST, FLST, 1983-07 FLT, 1993-up FXD

*Note: To be used with breather kit.



Sifon Mini-Breather Bolt Kit. Chrome breather cups have built in mount bolt for Big Twin models.
VT No. Year
40-0453 1992-99 Big Twin
40-0454 TC-88



Extended Breather Bolts allow mounting of air cleaner to breather bolt stand. Use with banjo set or cross line for breather connection.

VT No.	Type
35-0136	TC-88
35-0129	Evolution/XL
35-0144	Banjo Set
34-1186	Adapter

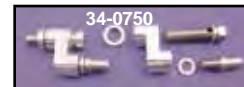


Sifon Braided Hose Crankcase Breather Kit features 3/8" inner diameter, stainless steel braided hose attached. Includes breather filter (with mounting stud), 24" hose and hardware. Air cleaner and carburetor support bracket must be purchased separately. Fits 1993-up Big Twin custom applications only.

VT No.	Item
35-0123	Kit
40-0570	Breather
35-0126	Bolt Kit



"Y" Breather Kit includes fittings to fit TC-88 with breather. Drill and tap frame to connect.
VT No. 35-0578

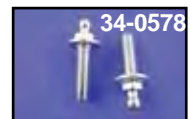
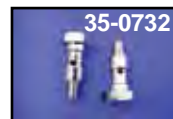


Billet Air Cleaner Mount Set will mount air cleaners with flat backing plates to Evolution and TC-88 models. Offset billet mounts feature built in breather passage that feeds inside air cleaner housing. Brackets can be rotated to proper position, then backing plate must be drilled to match. Threaded breather nipples will fasten back plate to brackets.

VT No.	Year	Type
34-0750	1991-99	Evolution
34-0751	2000-up	TC-88

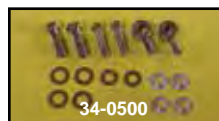
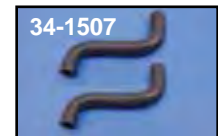


Chrome Air Cleaner Support Brackets are for installing the custom round or teardrop air cleaners. Fits 1984-92 Evolution Big Twin.
VT No. 31-3941



Breather Bolts fit 1993-up Big Twin models. 35-0578 has thru vent holes.

VT No.	Year	Type
35-0731	1992-up Evolution	Hex
35-0732	1999-07 TC-88	Hex
34-0578	1999-07 TC-88	Nipple
34-1509	2008-up TC-88	Nipple
35-1706	1992-up Evolution	NPT
34-1507	1999-07	Rubber
34-1508	2008-up	Rubber
34-0098	Bolt Set	Studs



Breather Bolt and Banjo Kit includes bolts for both Evolution and TC-88 applications and two banjos to accept 3/16" hose.

VT No.	Item
34-0500	Without tee
34-0808	With tee
37-0985	Evolution Nylon Washers
37-0986	TC-88 Nylon Washers
37-0989	TC-88 Alloy Washers