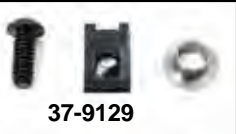
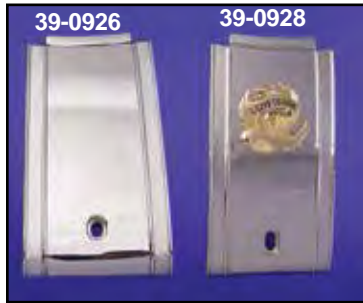




Tank Divider



Chrome Die Cast Tank Trim Panels replace existing rubber divider on 1984-99 FXST-FLST with die cast dash.

VT No.	Years/Model	Type
39-0926	1984-99 FXST	Chrome
39-0927	1984-99 FXST	Eagle Spirit
39-0928	1984-99 FXST	Gold Inlay Eagle Spirit
28-0433		Rubber Pad fits B, C, D
37-9129	FXST	Screw Kit



Tank Panel Black Rubber Divider for 1984-99 FXST models.
VT No. 28-0714



Chrome Long Rider Dash Panel is constructed of ABS plastic. Fits bobbed tanks on 1968-95 FLH-FXWG-FXST models. Rubber strip included.
VT No. 39-0450



Long Rider Dash Complete Kit with speedometer and switch for 1948-95 Big Twins.

VT No.	Ratio
39-0973	2:1
39-0974	2240:1



Chrome Dash Panel Extension extends the look of the dash on 2000-up Softail models. Replacing 71283-01.
VT No. 39-0429



Chrome Panel Edging slips on sheet metal dash panels and hub cap edges for decorative use. Sold in a 10 foot roll.
VT No. 37-8943



FXST Tank Panel Mount Nuts and Screws.

VT No.	OEM	Item
37-9128	61641-84	Bushings, 5 pack
37-8700	Screw	Chrome Button, 10 pack
37-9129	Kit	As above

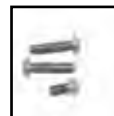


Speedometer Adapter Ring fits 1995-up FXD. It includes mount bracket and adapter ring to fit cast dash.
VT No. 39-0192



Chrome Dash Cover fits 1982-92 FXR, 1984-87 FXRS, FXRT, 1986 FXRD, 1987-92 FXR, FXRT, FXRS-SP and FXRS-CON. Replaces 61411-82. The two holes accept a fuel gauge and gas cap.

VT No.	Item
39-0100	Chrome Cover
9014-3	Acorn Bolt Set
9016-3	Button Bolt Set
28-2238	Rubber Trim Strip



Chrome Dash Panel Screws for 2005-up FXDWG.
VT No. 2346-3