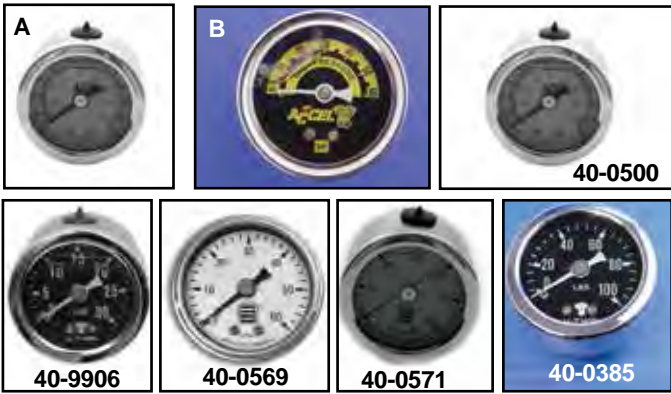




# Oil Gauge



**Liquid Filled 1½" Oil Pressure Gauges** feature a weather resistant sealed lens, stainless steel case, chrome rim and extra heavy mechanism. The liquid filled face eliminates needle bounce giving a constant reading. All gauges have ½" NPT male rear fitting.

VT No.	#	Pounds	Face	Brand
40-9906		0-30	Black	V-Twin
40-0500	A	0-60	White	AEE
40-0569		0-60	Silver	Sifton
40-0571		0-60	Blue	Sifton
40-0382	B	0-60	Black	Accel
40-0386		0-60	Black	V-Twin
40-9907	B	0-100	Black	Accel
40-0385		0-100	Black	V-Twin

**Sifton Big Twin Oil Pressure Gauge Kit** for 1984-99 Evolution models includes a 1½" liquid filled 0-60 lbs gauge and chrome fitting. Kit is available with or without oil pressure switch sender provision.

VT No.	Type
40-0585	With oil pressure switch fitting hole
40-0586	Without oil pressure switch fitting hole



**Chrome Oil Gauge Cover** is machined of alloy, with square hole in bottom.  
VT No. 40-0448

# Adapter



**Adapter Kit** includes fittings for both feed and return lines. Fits special application.  
VT No. 40-0540



**Chrome Oil Filter Adapter** fits 1999-up FXD, FXST, FLT, FLST.  
VT No. 40-4602



40-0315 Installed

**Oil Filter Adapter** installed in the generator position.  
VT No. 40-0315

**Sifton Oil Filter Adapters.**  
VT No. Fits  
40-0709 Chrome Filter  
15-1520 Rubber Seal Set  
15-1521 Gasket (40-4600)

# Oil Filter Wrenches



**Oil Filter Wrench** with ¾" drive fits all spin-on filters ¾" drive. Fits all models including TC-88.  
VT No. 16-0743



**Combination Oil Filter Wrench** includes drain plug hex at opposite end.  
VT No. 16-0451



**Swivel-Flex Oil Filter Wrenches** feature gripper teeth and a durable treated band with a vinyl covered flex handle which swivels to clear frame and exhaust obstructions. Replaces 96221-80.  
VT No. 16-0903



**Filter Wrench.**  
VT No. 16-1941