

**Note:** Rigid types have a milled head to fit replica rigid.

**VT No. Item Length**

**Rigid**

44-0221	Kit	10.25"
44-2038	Kit	11.75"
44-1951	Axle	10.25"
44-0230	Axle	10.75"
44-2043	Axle	11.75"
44-1985	Axle	11.25"
44-1986	Axle	12.25"
44-1942	Axle	12.50"



**Swingarm**

44-1945	Axle	11.50"
44-0947	Axle	12"
44-1044	Axle	12.50"

**Axle Collar Sleeves** have milled flat section on one end to fit rigid frame slots.



**VT No. Length U/M**

44-0394	1 <sup>5</sup> / <sub>16</sub> "	Pair
44-1987	1 <sup>13</sup> / <sub>16</sub> "	Each
44-1988	2 <sup>3</sup> / <sub>4</sub> "	Each
44-0316		Sleeve Collar
44-0520		Nut

# Rear Axle



**Rigid Frame Disc Brake Rear Axle** for use when 1973-up rear disc brake units are installed on rigid frames. Kit includes .750" diameter axle, nut, special spacer and washers. Other axles sold separately. Spacers may have to be cut to length. Rigid axles have milled area on hex head. Swing arm does not. Length includes threads not head.



**Chrome Rear Axle Nut and Washer Kit** includes two extra thick washers, nut and lock washers for 1973-up, on square swing arms.

<b>VT No.</b>	<b>Brand</b>
8715-4	Colony
44-0520	V-Twin

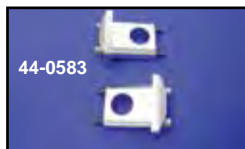


**Axle Locator Set** allow use of 3/4 axle in stock Rigid frames with 7/8" axle slots.  
**VT No. 44-1946**

# Axle Adjuster



**Axle Protector Plates** prevent axle nuts from scratching painted finish. Sold in pairs, polished stainless. Fits 1984-06 FXST-FLST.  
**VT No. 44-1989**



**FXR Rear Axle Adjusters** include heavy axle pull blocks and chrome end caps with allen screws, for 1982-94. Chrome pivot covers also available.

<b>VT No.</b>	<b>Item</b>
44-0583	Adjusters
42-0030	1982-89 Pivot Cover Set



**Calibrated Rear Wheel Adjusters** feature chrome pyramid blocks with sight indicator to view calibrated adjuster bolt, for accurate and easy wheel alignment. Adjuster bolt is chrome heavy duty 1/2" rod with micrometer markings; nut is stainless steel. Fits 1973-85 FX-FLH, 1984-86 FXST. **VT No. 44-2011**



**Pyramid Adjuster Block Kit** has die cast chrome pyramid end caps for use with stock type pull adjusters. Fits 1997-up FLT.  
**VT No. 44-0250**

# FXD



**Chrome Adjuster Block Set** fits 1991-05 FXD models.  
**VT No. 44-0543**



**Chrome Rear Axle Nut Cover Set** features simple set screw installation. Fits 1991-up FXD.  
**VT No. 37-9375**



**Chrome Rear Wheel Adjuster Hardware** for 1991-05 models.  
**VT No. Item**

2000-6	Swingarm End Plate with Adjuster
2001-2	Swingarm End Plates