

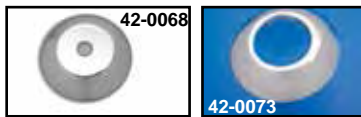


# Hubcap



**Chrome FLST Front Wheel Hubcaps** are held by a snap ring. The full 8" dresser hubcaps for wire wheels on glide type forks fit between hub and axle without additional hardware.

VT No.	OEM	Years	Fits
42-9921	43067-86	1986-96	FLST Single Disc 16" wheel held by snap ring
45-0410	43155-97	1997-99	FLST As Above
45-0761			Cap Only
45-0960	43162-97		Front Hub Cap Kit, chrome
45-0934			Cap Only
45-0801	43155-00	2000-06	FLST
45-0805	415401-07	2007-up	FLST
12-0956	11175		Snap Ring for 1986-96 FLST Hubcaps



**Chrome 4 1/2" Hubcaps** fit between hub and axle without additional hardware.

VT No.	Type	Year	Model
42-0068	Rear	1984-up	FXST-FLST
42-0073	Front	1986-up	FLST
45-0408	Front, Mag	1984-95	XL, FXD Brushed Aluminum



**Hub Cap Adapter Kits.** Hubcap available separately.

VT No.	Fits	Side	Chrome Hubcap Kit
44-0809	1986-99 FLST	Right, zinc	45-0862
44-0976	2007-up FLST	Right, zinc	
44-0894	1997-99 FLSTS	Left, zinc	45-0866
44-0888	2000-06 FXST	Right, zinc	45-0863
44-0889	1984-99 FXST	Right, zinc	45-0864
44-0890	1997-99 FXSTS	Left, zinc	45-0865
44-0974	2000-06 FLSTS	Left, zinc	45-0867
44-0975	2000-06 FLSTF		
44-0995	2000-06 FLST		
—	2000-06 FLSTS	Right	45-0964



**"Baby Moon" Chrome Rear Hubcap** with screws. Fits 1993-up.  
VT No. 45-0416



**Chrome Mini Cap** fits between swingarm and axle spacer. Fits 1973-95.  
VT No. 45-0692

# Front And Rear Wheel Hub

All hubs include bearings, races, seals, seal spacers and are assembled and chromed for 40 spokes except where noted.



Rear Hubs			
VT No.	#	Year	Model
45-0670	A	1982-85	FXE-FXWG-FXR
45-0325	B	1986-99	FLT
45-0670	A	1984-85	FXST
45-0671	A	1986-99	FXR-FXST-FLST
45-0324	C	1986-99	As Above Billet Type
45-0332	C	2000-06	FXST-FXD, 2000-01 FLT
45-0333	C	2002-07	FLT
45-0333	C	2006-07	FXD
45-0859	C	2008-up	FXD without ABS
45-0473	C	2008	FLT Only without ABS
45-0474		2008-up	FLT
45-0853	C	2008-up	FXST-FLST-FXDWG without ABS
Rear Hubs with ABS			
45-0813		2009-up	FLT with ABS
45-0812	C	2012-up	FXD with ABS
45-0814	C	2011-up	FXST-FLST-FXDWG with ABS



Front Hubs			
VT No.	#	Year	Model
45-0295	D	1984-15	FXST-FXSTC-FXDWG
45-0295	D	1984-85	FXWG, Single Disc
45-0329	F	1996-99	FXST-FXDWG-FLSTS
45-0588	E	2000-07	FXST, Single Disc, Polished
45-0785	E	2008-up	FXST, FLST, FXDWG without ABS
45-0591	E	2000-07	FXST-FLST, Single Disc
45-0688	D	1986-99	FLST-FLSTC Single Disc
45-0298	G	1984-99	FXR-FXD-FXRS
		1984-85	FXSE-80, FXEF Single Disc
45-0292	G	—	As above but Dual Disc
45-0532	H	2000-03	FXD, FXDL Single Disc/Dual Disc
45-0641	H	2000-03	FXDL-FXDX, Single Disc (21")
45-0589	I	2006-07	FXD
45-0788	I	2008-up	FXD with 25mm bearings, 49mm forks w/o ABS
45-0590	J	2006-07	FXDWG
45-0293	D	1988-99	FXSTS
45-0326	A	1984-99	FLT
45-0336	F	2000-07	FLT
45-0786	E	2008only	FLT Dual Disc without ABS
45-0968	E	2009-up	FLT, Touring, Dual Disc without ABS
45-0342		2004-05	FXD



Front Hubs with ABS			
45-0815	E	2000-up	FXST, FLST, FXDWG with ABS
45-0816	I	2010-up	FXD with ABS
45-0817	E	2009-up	FLT with ABS

**Note:** Install ABS bearing first on brake rotor side of hub with greenish tan side facing out. Install non ABS bearing on drive side of hub with lettered side facing out.