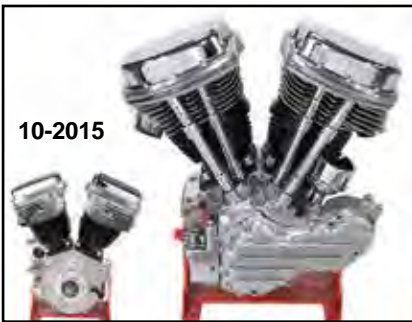




# V-Twin Mfg. Replica Panhead Long Block



### Replica Details include

- OE Number Boss
- Stock Exhaust Port
- Replica Oil Pump

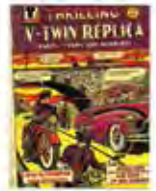
### FLH Panhead Long Block

- 10-1994 Alloy, 74"
- 10-2003 74"

**Replica Panhead 74" Engines** have replica type heads with stock exhaust ports and V-Twin cases. The 1948-54 style uses a plumber intake manifold. The 1955-61 style uses O-ring intake manifold. Engines include cast iron oil pump. OE number boss in provided blank on left side. Actual case numbers are on right side. The sprocket shaft supplied is for 1936-64 style 4-speed stock transmissions. Engines listed do not include intake manifold.

VT No.	Year	Finish	Distributor
10-1995	1948-53	Chrome	Manual
10-1996	1948-53	Alloy	Manual
10-2015	1955-61	Chrome	Automatic
10-2016	1955-61	Alloy	Automatic

## V-Twin™ Panhead Long Blocks



**V-Twin Panhead Parts Dope Reference Guide** for 100% V-Twin restoration components and tips for 1948-65 Panhead models. 272 pages. VT No. 48-1364

**FLH Panhead Long Block** is of 74" or 80" cubic inch displacement featuring a crankcase, Sifton oil pump/breather assembly, stock stroke flywheel, Timken bearing, stock FLH cam installed with a matched pinion and cam gear with a Torrington full compliment bearing. Assembly supplied with a cast finished ribbed cam cover, chrome lifter blocks which are fitted with hydraulic tappets and stock steel pushrods. Cylinders are stock replacement with standard compression 8.5:1 cast pistons and Hastings rings. Top end includes single plug head fitted with rocker arm assemblies, chrome pan covers with thick D-Rings, and chrome steel pushrods covers. Order manifold (Shovel band style), carburetor and 2 brush generator separately. Automatic advance distributor is included. Entire unit is pre-run and factory tested for oil pump pressure. Also available as 1963-65 type with overhead oiler line. VT No. 10-2005 features stainless pans and D-Rings and zinc plated lifter blocks.

VT No.	Replica	Item	Year	Cam Cover
—	10-1977	74" 1958 Style w/Stock Exhaust Ports	1948-65	Finned
10-2003	10-1958	74" 1958 Style	1955-62	Finned
—	10-1976	74" 1958 Style with Alloy Finish	1955-64	Finned
10-1994	—	74" 1958 Style w/Stock Exhaust/Alloy Finish	1955-64	Finned
10-2004	—	80" 1963-64 Style Overhead Oiler	1963-64	Finned
10-2012	—	74" 1963-64 Style Overhead Oiler	1963-64	Finned
10-1998	—	74" 1965 Style Overhead Oiler	1965-69	Smooth
10-1999	—	80" 1965 Style Overhead Oiler	1965-69	Smooth



10-1994 Detail