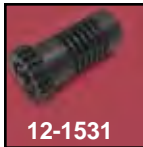




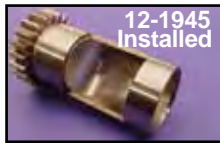
Breather Gear



12-1510 Stock Plastic Breather Valves.
VT No. OEM Year
12-1531 25310-82A L1977-99
12-1953 As Above .005 Oversize
C-Breather Valve Thrust Washer Set for 1950-99 Big Twin includes one of each size noted.

VT No. Fits Set
12-1510 1979-82 8 Steel
 .110, .115, .120, .125
 .130, .135, .140, .145
12-1530 1982-99 8 Plastic
 .130, .135, .140, .145
 .150, .155, .160, .165

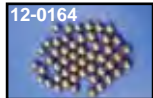
Breather Valve Thrust Washer Set for 1950-78 Big Twin. Made of steel, one of each of the following: 110, .115, .120, .125
VT No. 12-1509



12-1945 Sifton Air Ramp fits S&S/ Sifton Breather Gear on 1936-99 models to remove more air and oil from crankcase. Requires removal of screen for installation. Gear not included.

VT No. 12-1945

Ball Bearings

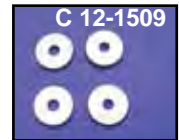


VT No.	OEM	Size	Use/Fits
12-0172	8854	3/16"	1948-52 Hydraulic Unit
12-0161	8856	7/32"	Clutch Hub, 1941-54 All
12-0164	8858	1/4"	Oil Filler, 1948-64
12-0158	8866	3/8"	Check valve, 1941-up FL-FLH, Classic, 1971-up all FX, 1954-up all XL
12-0129		3/8"	Nylon Ball Bearings
12-0156	8872	1/2"	Shifter Cam Plunger 1941-76 with Handshift
12-0157	8860	5/16"	Clutch Ramp Assembly Steering Head 1971-83 All XL, 1954-78 All XL



Sifton™ Breather Gear Kit is constructed of precision ground steel with screen installed. Eight piece steel thrust washer set included. Fits 1948-77.

VT No. 12-1538



A-Big Twin Steel Breather Valve is a machined breather valve and gear. Designed to replace the stock steel or plastic units. Order 8-piece thrust washers separately. Available in stock duration only with either standard or +.030 oversize outside dimension.

VT No.	Years	Size	Brand
12-0786	1936-47	Standard	Sifton
12-9967	1936-47	Standard	S&S
12-9968	1936-47	+ .030	S&S
12-9907*	1948-77	Standard	S&S
12-1536**	1948-77	Standard	Sifton
12-9956*	1948-77	+ .030	S&S
12-9906	1978-99	Standard	S&S
12-1537	1978-99	Standard	Sifton
12-9957	1978-99	+ .030	S&S
12-9909	All	Washer Set	S&S
12-1510	All	Washer Set	Sifton

*Note: Requires use of late style thrust washer 1979-82.
 **Note: Includes thrust washer set 1979-82 type.



Oil Pump Drive Gear Set fits 1973-84 FL-FX.
VT No. 12-1546

Sifton High Flow Pinion Shaft Oil Pump Drive Gear for 1939-53 OHV Big Twins. 6 Tooth gear increases oil flow rate by approximately 25%. Requires use of late style (OEM#26345-73 VT No. 12-1407) oil pump drive shaft gear. Also available as a kit that includes correct drive shaft gear.

VT No. Item
12-1496 Pinion Shaft Gear only
12-1505 Kit



Breather Parts



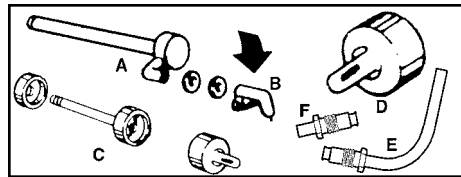
Big Twin Pinion Part Kit is complete with proper parts.
VT No. Fits Kit
12-0101 1936-53 Five Piece Kit
12-0102 1955-69 Four Piece Kit

Pinion Shaft Seal Ring is used on all 1940-53 Over Head Valve Big Twins, sold each. Replaces 24697-40.

VT No. 12-1525

Breather Screens and Separator fits 1936-69 Big Twin, sold in packs of 5.

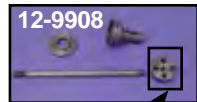
VT No.	OEM	Item
12-1517	25275-36	Screen
12-1518	25279-36	Separator



Primary Breather Tubes for Big Twin models.

VT No.	#	OEM	Years	Item
49-1743		543-36	1936-38	Tube
12-1514	A	24912-48	1948-57	Tube
12-1448	A	29411-36	1936-47	Tube
12-0997	A&B	1936-47	Kit	
12-1528	B	24918-64	1936-57	Snoot
12-9908*	C	Kit	1958-64	All
12-1513	D	24918-58	1958-64	Rubber Nipple
12-9775				Breather Spacer & Washer Set
40-0547	E	24912-65	1965-66	Tube with Nut
40-0548	F	24913-67	1967	Tube with Nut
12-1191		24914-58	1958-64	Stud Only

*Note: Includes 24925-58 spacer, 24914-58 stud, (24922-58 collar, 24923-58 cap Note: cap and collar have been pressed together) and 24918-58 rubber ripple.



Cap and Collar have been pressed together