



Tappet Assembly



Sifton Tappet Assembly; Sets of 4, feature centrifugal surface fine grinding and precision fit rollers and pins. Solid units include adjuster screws and lock nuts.

VT No.	Size	Year	Type	Model
10-0770	STD	1948-52	Solid	Panhead
10-0771	.005	1948-52	Solid	Panhead
10-0772	.010	1948-52	Solid	Panhead
10-0588	.002	1953-85	Hydraulic	Pan-Shovelhead



10-0670

VT No.	Size	Year	Type	Model
10-0785	STD	1948-52	Solid	Panhead
10-0674	STD	1953-85	Hydraulic	Pan-Shovel
10-0777*	.005	1953-85	Hydraulic	Pan-Shovel (.7367 OD)
10-0778*	.010	1953-85	Hydraulic	Panhead-Shovelhead
10-0670*	Standard	1953-85	Hydraulic	Panhead-Shovelhead

*Note: Max Roller Type

Big Twin Tappet Assemblies

include roller assembly installed. Choose Jims, Eastern or Sifton. Jims does not include adjuster screws or nuts where necessary. Jims available with Big Axle Roller Assembly.

Roller Types



Big Axle Jims	Standard		Size
	Eastern	Sifton	
1948-52 Solid			
10-0630	10-0500	—	STD
10-0631	10-0501	—	.005
—	10-0523	—	.010
—	10-0450	—	.015
1953-85 Hydraulic			
10-0634	10-0504	—	STD
—	—	10-0570*	STD (Set)
10-0635	—	10-0505*	.005
—	—	10-0525*	.010
—	—	10-0681*	.005 (Set)
—	—	10-0886*	.010 (Set)
—	10-0530	—	.015
—	10-0531	—	.020
—	10-0532	—	.025



Solid Tappet



Hydraulic Tappet



10-0541

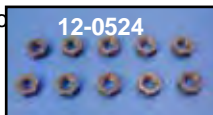
Tappet Adjusting Screws and Nuts.

VT No.	U/M	Fits	Item	Type
10-0541	Set	1936-52 Big Twin OHV Kit		OE Style
10-0985*	Set	1936-52 Big Twin OHV Kit		Eastern Style
10-0516	4 pack	1936-52 Big Twin	Screw	Eastern Style
12-0523	10 pack	1936-52 Split	Nuts	Eastern Style
12-1196*	4 pack	1957-85 Big Twin	Screw	

*Note: 3/32 - 32 thread.

Replacement Nuts fit each brand of pushrod

VT No.	Brand	Size	U/M
37-8866	V-Twin	3/16 - 32	4 pack
12-0524	Eastern	3/32 - 32	10 pack



Sifton Tappet Assembly Kit includes tappets with large single axle roller design and hydraulic or solid units for 1953-84 Big Twin.

VT No.	Type
10-0680	Hydraulic
10-0768	Solid
10-0934	Roller Set
10-0588	Hydraulic .002
10-1451	Hydraulic, 4 piece set, large pin roller



10-1451



Sifton Big Twin Hydraulic Tappet Assembly

Set of Four, feature centrifugal surface fine grinding and precision fit max-axle rollers and pins. Fit 1953-84.



10-0671

VT No.	U/M	Outside Diameter
10-0670	Set (4)	.7310
10-0673	Set (4)	
10-0671	Each	



10-0198



10-0199

Hydraulic Tappet Units replace 17920-53 fits 1953-85 Big Twin.

VT No.	Brand	U/M
10-0521	Crane	Each
10-0199	Sifton™	Each
10-0198	Sifton™	Four Piece Set
10-0277	Replica	Four Piece Set
10-0333	VT	Rowe Set



10-0314

Sifton Hydraulic Tappet Assembly.

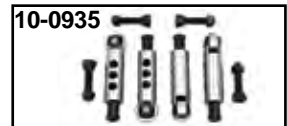
Lifters with replica rollers. are sold in sets of four. Order hydraulic unit set separately. Also available in eight piece tappet and hydraulic unit kit.

VT No.	OEM	Item
10-0313	18522-53A	Tappet Body Set
10-0776	18522-53A	As Above
10-0315	18522-53S	As Above, replica
10-0314	Hydraulic Tappet Body and Lifter Set	

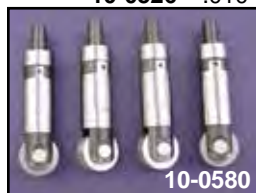


Lightning Tappet Assemblies fit 1948-52 Big Twin. Complete units precision machined and drilled for early engines. Holes allow better lubrication in valve train. Adjuster screws included. Sold each unless noted.

VT No.	Size
10-0935	STD, Set of 4
10-0512	STD
10-0513	.005
10-0526	.010



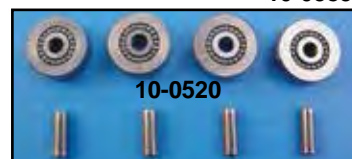
10-0935



10-0580

Sifton Maxi-Axle Tappet Assemblies fit 1953-84 Big Twin feature built in integral pump unit to set as a full hydraulic unit.

VT No.	Size
10-0580	STD
10-0581	.002
10-0582	.005
10-0585	.010



10-0520

Tappet Roller Repair Kit includes four pins and four roller assemblies for 1929-84.

VT No.	Brand
10-0520	V-Twin
12-1179	Pins Only, 10 pack
10-0934	Max-Tappet-Pin Kit



10-0934



10-0934