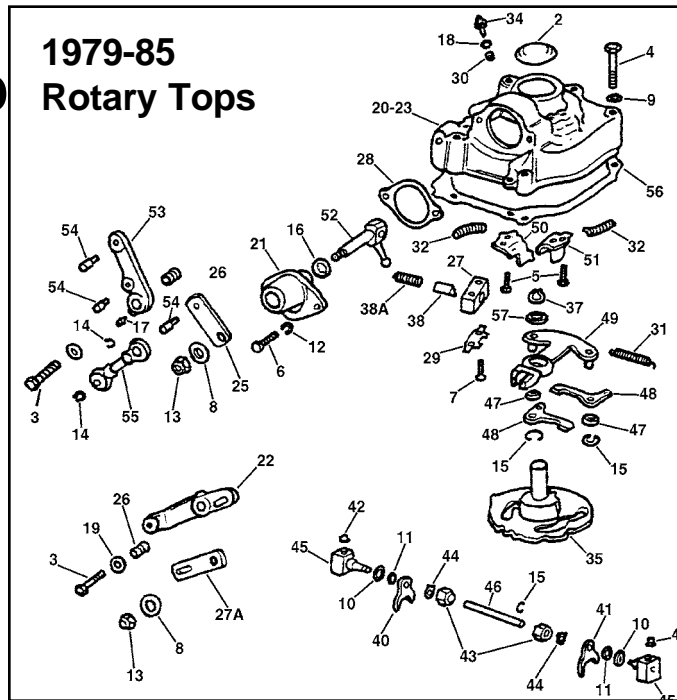




# 1979-85 Big Twin Rotary Transmission Top

4-Speed Rotary Top Shifter Linkage and Hardware for 1979-85 FX-FL-FXWG models.

VT No.	OEM	#	Item U/M
17-0120	650	2	Plug, 10 pack
17-9945	2818A	3	Bolt
9656-8	—	4	Screw Set, Chrome
9657-8	—	4	Screw Set, Zinc
8905-7	—	4	Screw Set Allen
12-0702	6750	10	Shim, .005, 10 pack
12-0703	6752	11	Shim, .015, 10 pack
12-0938	11016	14	Snap Ring, 10 pack
12-0939	11036	15	Pawl Retainer, 10 pack
14-0102	12010	16	Cover Oil Seat, 5 pack
37-8856	25715-47	17	Grease Fitting, 10 pack
15-0217	25811-11	18	Switch Washer, 10 pack
10-1269	32535-48	19	Lever Washer, 5 pack
17-9947	33167-79	20	Top Cover
17-9909	33174-79	21	Shaft Cover
17-2125	As Above	21	Chrome
17-9820	33177-79	22	Lever Complete FL-FXWG
17-9933*	As Above	22	Chrome Forged, Steel
17-9873	33185-79	25	Shifter Rod Assembly FX-FXE
17-9869	33187-79	26	Spacer Standard, 5 pack
17-9870	—	26	Spacer .005 Oversize, 5 pack
17-9998	—	26	Spacer .010 Oversize, 5 pack
17-9910	33188-79	27	Plunger Body
17-9872	33190-79	27A	Lever Arm FL-FXWG
15-0157	33196-79	28	Cover Gasket, 10 pack
17-0907	33197-79	29	Bolt Lock, 10 pack
17-0163	33198-79	30	SW Bushing, each
13-0124	33199-79	31	Pawl Spring, 10 pack
13-0125	33201-79	32	Carrier Spring, 10 pack
32-0043	33901-79	34	Neutral Switch
17-9948	34020-79B	35	Cam Assembly
14-0533	34036-80		Shifter Cam Seal, Oversize 1980-84, 10 pk
12-0917	34040-52	37	Retaining Ring, 10 pack
17-0076	34062-52	38	Cam Follower
13-0130	34068-52A	38A	Cam Follow Spring, 10 pack
17-0115	34158-36	40	Main Shifter Fork
17-0116	34159-36	41	Countershaft Shifter Fork
17-0118	34168-52	42	Finger Roller, 2 pack
12-0526	34179-33	43	Bushing Nut, 5 pack
17-0906	34180-33	44	Lock Washer, 10 pack
17-9896	34184-79	45	Shifter Finger
17-0136	34145-76	46	Fork Shaft
17-0058	34461-72	47	Shifter Pawl Spacer
17-0057	34476-72	48	Shifter Pawl
17-9949	34494-74C	49	Pawl Carrier
17-9906	34517-80	50	Rear Pawl Stop
17-9907	34518-80	51	Front Pawl Stop
17-9958	Set	50/51	Pawl Stop Set
17-9904	34652-80	52	Shifter Lever Shaft
17-9843	34655-79	53	Lever Complete FX-FXE
17-9937	As Above		Chrome Forged
17-9882	34658-79	54	Lever Pin, 5 pack
17-9874	34659-79	55	Rod Linkage FX
15-0162	34824-79	56	Cover Gasket
17-9911	35336-74	57	Thrust Washer, 5 pack



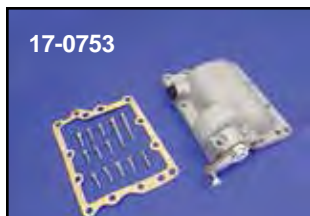
**1979-85 4-Speed Trans Top** includes all parts completely assembled. Arm with grease fitting is chrome plated; all other parts have a natural finish.

VT No.	OEM	Fits
17-0010	33158-80	FLH
17-0011	33183-80	FXE



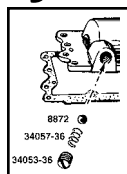
**Shifter Top Hardware Kit** fits Late 1979-85 4-Speed Big Twin rotary top includes all parts except top casting, shaft cover and linkage.  
**VT No. 17-0950**

## Jockey Top



**Hand Shift Jockey Top** with alloy finish is for 1936-78 Big Twin. 4 Speed type. Available with or without neutral switch.

VT No.	Type
17-0753	Without switch
17-0754	With switch



**Cam Plunger Kit** includes numbers 34053-36 cap screw, 34057-36 spring, and 8872 ball on 1936-79 hand shifter models.

VT No.	Item
17-9764	Kit
13-0129	Spring, 10 pack
12-0156	Ball, 50 pack



**Inner Shifter Arms** fit 3 and 4 speed hand shift transmission tops. VT No. 17-0500 has 5/16" — 24 threaded hole. VT No. 21-0216 adapter arm reverses shifting on 1936-50 tops.

VT No.	OEM	Year	Finish
17-0504	34448-36	1937-50	Parkerized
17-0501	34448-36	1937-50	Zinc
17-0500	34448-51	1951-65	Zinc
21-0216	—	1936-50	Zinc