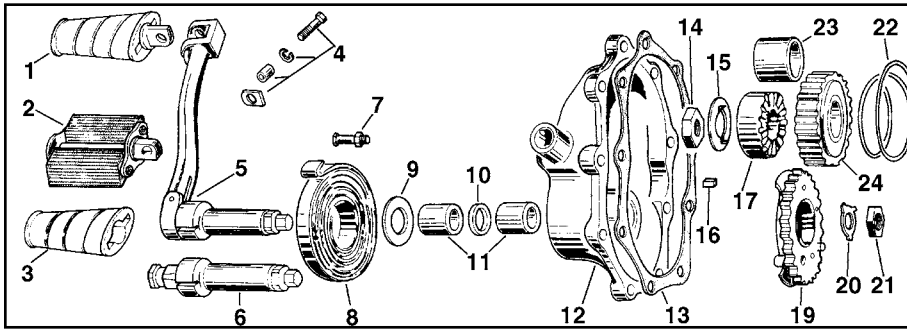




# Kick Starter Parts for 4-Speed Big Twin



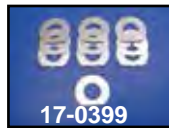
74" and 80" Kick Starter Parts listed below will fit 1936-84 3 and 4 Speed models.

VT No.	#	OEM	Item
17-0301	1	33175-16B	Kick Starter Pedal
17-0300	2	33175-16	Bicycle Pedal
28-0213	3	33182-63A	Kick Starter Rubber
17-0306	4	33213-31	Pin Kit
17-0095	5	33068-54	Early Kick Starter Arm
17-0312	6	33096-54A	Kick Starter Shaft
8120-3	7	33090-36	Spring Stud
8120-3T	7	33090-36	Spring Stud
13-0123	8	33085-36	Kick Starter Spring
17-0413	9	33080-36	Thrust Washer
14-0115	10	33076-37	Kick Starter Seal
10-0720	11	33288-37	Bushing Kit
43-0100	12	33277-36A	Kick Starter Cover
15-0158	13	33295-36	Kick Starter Gasket
12-0500	14	7977	Mainshaft Nut
17-0903	15	33396-39	Mainshaft Lock
12-0206	16	33393-50	Key
17-0403	17	33381-39	Kick Starter Clutch Gear 1939-74
17-0416	17	33560-75	Kick Starter Clutch Gear 1975-85
17-0400	19	33350-36	Crank Gear
17-0334	19	33350-36	Crank Gear, Sifton
17-0902	20	33082-16	Kick Starter Shaft Lock
12-0527	21	7911	Kick Starter Shaft Nut
13-0128	22	33391-36	Ratchet Spring
10-0721	23	33438-50	Gear Bushing
10-2486	23	As Above	.005 Oversize
17-0401	24	33430-50	Starter Gear, 16 Tooth
17-0402	24	33430-59	Starter Gear, 14 Tooth



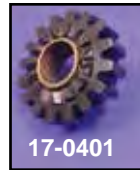
**Big Twin Small Parts Only Kick Starter Kit** contains parts as pictured, 16 tooth ratchet gear set, 24T crank gear, kick starter shaft, ratchet spring, lock tabs, nuts and key.

VT No. 17-0412



**Sifton Kick Starter Gear and Shaft Assembly** includes large gear, corresponding shaft, nut, lock tab and thrust-washer.

VT No. 17-0335



**Complete Kick Starter Ratchet Gear Kit** contains ratchet gear, clutch gear, spring and key way. It is available with 16 or 14 tooth starter gear. Used on all 1936-85 4 Speed Big Twin.

VT No.	Type	Year
17-0404	16 Tooth Kit	1936-69
17-0405	14 Tooth Kit	1936-69
17-0671	14 Tooth Kit	1970-85



**Bumper Plate, Kick Starter for Big Twin.**

VT No.	OEM	Fits
17-0407	33353-36	All 1941-75
17-0408	33353-78	1978-up 4 Speed

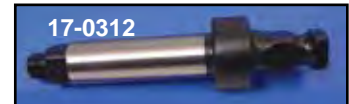
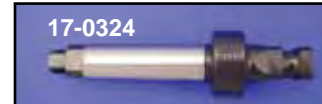


**Kick Starter Bumper Plate Screws** replace 1864B. Used on all 1936-85 Big Twins.  
VT No. 17-0411



**Oil Deflector Mainshaft Starter Gear** replaces 33429-39, fits all 1941-79 Big Twins. 33429-80 fits 1980-84 Big Twins.

VT No.	OEM	Fits	Item
17-0409	33429-39	1941-79 Big Twin	Deflector
17-0410	33429-80	1980-up Big Twin	Deflector
37-9134	2333W	1941-79	Screw
37-9173	3789A	1980-84	Screw



**Big Twin Kick Starter Shaft** replaces 33096-54A. Fits 1936-84 Big Twin.

VT No.	Type
17-0312	V-Twin™
17-0317	Jims
17-0324	Sifton



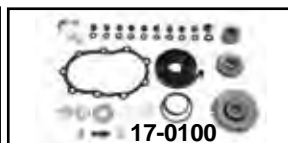
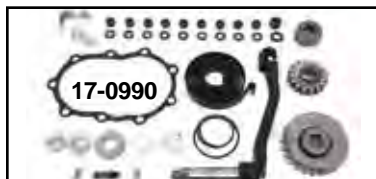
**Longer Kick Start Shaft** fits 1937-84 Big Twin 4-speed, eliminates the use of fold out kick starter arm. The stroker

I-Beam or other offset arms may be fitted.

VT No.	Brand
17-9145	Jims
17-0591	Sifton

**Kick Start Shaft with gear.** Fits 1941-1964 FL.

VT No. 17-0829



**Replica Kicker Kit.**  
17-0990 Kicker Kit  
17-0100 Small Parts