



Engine Sprocket



Solid Engine Sprocket Conversion Kit includes solid splined sprocket, engine nut with lock tab, engine seal spacer and shims. This kit will replace the entire compensator motor sprocket assembly.

VT No.	Fits	Teeth
19-0445	1970-84 FX-FL	22T
19-0423	1970-84 FX-FL	23T
19-0424	1970-84 FX-FL	24T
19-0425	1970-84 FX-FL	25T

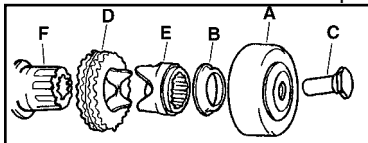


Compensator Sprocket Kit includes all parts pictured with 24T sprocket. Fits 1970-84 FLH-FXE-FLT-FXR.

VT No. 19-0404

Order spacer and shims separately.

VT No.	OEM	Year	Size	Item
10-0427	24002-70	1970-up		Spacer
10-0428	24032-70	1970-up	.060"	Shim
	24033-70	1970-up	.090"	Shim
	24034-70	1970-up	.120"	Shim
	24035-70	1970-up	.150"	Shim
	24036-70	1970-up	.180"	Shim
Set of 6	24037-70	1970-up	.210"	Shim

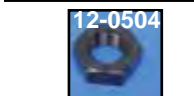


Compensator Sprocket Parts.

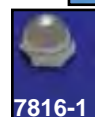
VT No.	#	OEM	Year	Item
19-0071	D	40275-70	Sprocket	1970-84 24 Teeth
19-0070	D	40282-70	Sprocket	1970-84 23 Teeth
19-0116	E	40299-70	Slide cam	1973-83
19-0117	B	40324-70	Cup	1970-83
19-0118	F	40375-70	Extension	1970-85
19-0119	A	40384-70	Retainer and Cover	1970-83
12-0506	C	40392-70	Nut	1970-90



Sprocket Nut and Lock Tab Set for 1955-up Big Twins allows locking of nut by utilizing 2 tabs which fit into sprocket holes when non-compensator sprocket is used.



VT No.	Item
17-0945	Kit
12-0504	Nut Only



Acorn Engine Nuts for all Big Twin.

VT No.	Fits
7107-1	1936-54
7816-1	1955-76



Chrome Pike Engine Nut fits Big Twin 1955-up sprocket shaft.

VT No. 37-0890



1970-83 Big Twin Compensator Engine Sprockets

VT No.	Teeth	Type
19-0379	22	FLH-FXE
19-0070	23	FLH-FXE
19-0071	24	FLH-FXE



Big Twin Offset Engine Sprockets with spline.

24T	25T	Offset
19-0135	19-0136	1/4"
19-0103	19-0107	1/2"
19-0104	19-0108	3/4"
19-0105	19-0161	1"
19-0106	19-0162	1 1/4"
17-0945	17-0945	Nut Kit



Engine Sprockets

Spline	Taper	Teeth
1955-up	1930-54	
19-0050	19-0054	22
19-0051	19-0055	23
	19-0137	23
19-0052	19-0056	24
19-0053	19-0057	25
—	12-0200	Key
17-0945	12-0503	Nut
		Chrome Sprockets.
	19-0492	— 24
	—	19-0075 23



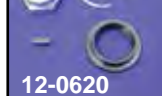
Taper Sprocket Kits.

19-0138	22T
19-0137	23T
19-0139	24T
19-0140	25T

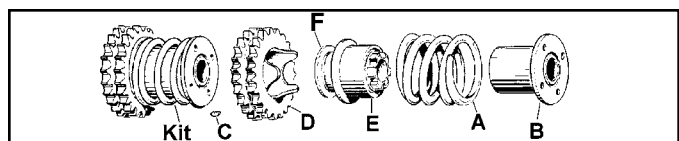
Compensator Sprocket Engine Nuts.

VT No.	Year	Type
12-0506	1970-90	Replica
12-1946	1970-90	Chrome

Engine Sprocket Nut Kit includes correct nut, key retaining ring and left bearing oil slinger.



Kit	Nut	Fits
12-0620	12-0503	1941-54 Big Twin
12-0619	12-0501	1929-73 45
12-0633		1941-54 Slinger



Compensator Parts for 1955-69 Big Twins.

VT No.	#	OEM	Item
19-0046	Kit	ABCDEF	Complete Kit
13-9238	A	40302-55	Spring
19-0391	B	40385-55	Nut
12-0210	C	40390-54	Key
19-0044	D	40275-55A	24T Sprocket
19-0406	E	40292-55A	Slide Cam
19-0045	F	—	Sprocket Shaft Extension