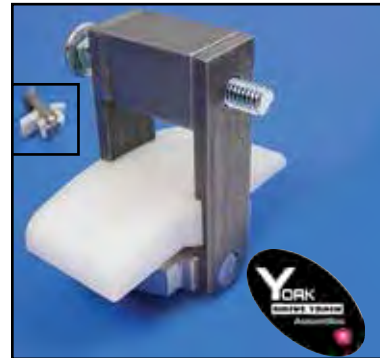




# Primary Chain Tensioner



**York Big Twin Hydraulic Primary Chain Tensionator™** features a hydraulic valve which controls the motion of the submerged piston which constantly keeps the chain in tension for 1965-06 Big Twins.  
**VT No. Item**  
**18-0120 Kit**  
**18-0128 Shoe**



**York Chain Adjuster Kits** feature automatic self adjusting by use of spring loaded shoe.

**VT No. Year**  
**18-0580** 1965-00  
**18-0581** 2001-06  
**18-3681** Nylon



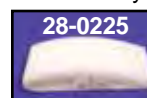
**Self Adjusting Chain Tensioner** fits models with wet clutch. The tensioner replaces factory type detent adjuster shoe assembly. Tensioner kit includes all hardware and instructions for complete conversion. Fits 1965-2000.

**VT No. Item**  
**18-0580** Tensioner  
**18-3681** Nylon Pad Only

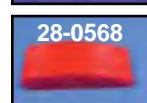
**Chain Tensioner Parts** fit Big Twin models.

VT No.	#OEM	Type	Year
18-8247	All	Complete Kit	1965-84
18-8314	All	Complete Kit	1985-99
18-3217	B-C-F-G	Hardware Kit	
37-9030	A	1783 Screw, 10 pack	
37-8801	B	3862B Bolt, 5 pack	
18-3682*	C	4401W Hex Bolt, each	
28-0225	E	39976-65B Nylon Pad	1965-00
28-0568	E	Red Nylon Pad	
17-0915	G	39996-65 Lock, 10 pack	
18-3218	H	39990-65 Shoe Mount Bracket	1965-00
18-3219	F	39993-65 Plate	
18-3622	I	39992-65A Nut and 39998-65 Anchor Plate	
18-3634	J	— Anchor Plate with carriage bolt (K)	
37-8802	K	5444 Carriage Bolt, 5 pack	
18-3223	I	39992-65A Nut Only	

\*Note: Early style hex bolt screws into 18-3223 nut.



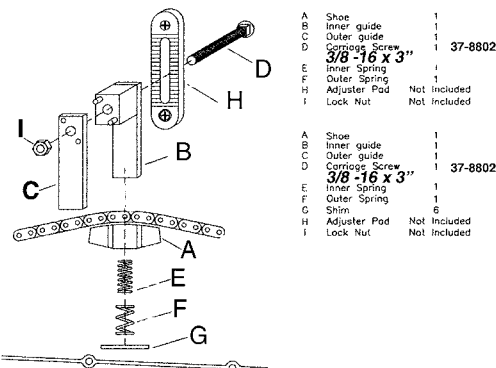
**Primary Chain Nylon Liners.**



VT No.	OEM	Year	Model
28-0233	39976-65	1965	Big Twin
28-0225	39976-65B	1966-84	Big Twin
28-0568	Red	1966-84	Big Twin

## Installation Instructions

1. Drain oil.
2. Remove the primary cover, the original adjuster shoe with the bracket and the carriage screw.
3. Install the longer carriage screw from the kit into the serrated adjuster pad.
4. Install the inner guide onto the carriage screw. Install the shoe with the springs onto the inner guide and place the outer guide onto the inner guide pins as shown.
5. Position the shoe, springs and guide assembly at the lowest point of possible adjustment on the pad. Install the original carriage screw lock nut and tighten it.
6. The amount of spring exposed from the bottom of the shoe will depend on chain wear. It should be 5/8 inch or less.
7. If more than 5/8 inch exists, raise the bottom of the spring by loosening the nut and raising the assembly for kit 18-0580 or by using shims provided for kit 18-0581. Make this adjustment until 5/8 inch of spring is exposed.
8. Replace the primary cover with a new gasket and fill it with oil to the proper level.



A	Shoe	1	
B	Inner guide	1	
C	Outer guide	1	
D	Carriage Screw	1	37-8802
E	Inner Spring	1	
F	Outer Spring	1	
H	Adjuster Pad	Not included	
I	Lock Nut	Not included	

A	Shoe	1	
B	Inner guide	1	
C	Outer guide	1	
D	Carriage Screw	1	37-8802
E	Inner Spring	1	
F	Outer Spring	1	
G	Shim	6	
H	Adjuster Pad	Not included	
I	Lock Nut	Not included	