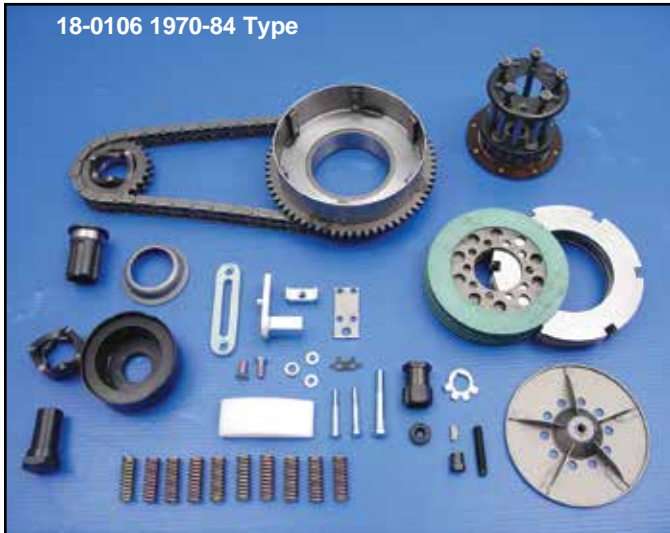




Primary Chain

Primary Chain Drive System



Primary Chain Drive Systems for Big Twins include 76 or 82 link primary chain, chain shoe adjuster assembly, clutch drum basket with starter ring gear and steel and fiber clutch plates with pressure plate assembly. Correct front compensator sprocket assembly includes all parts necessary for installation, including sprocket nut. Big Twin 5 Speed Softail models and all pre1985 FLH-FX 4-Speeds require 82 link primary chains; 1980-up FLT-FXR 5-Speeds require 76 link primary chains.

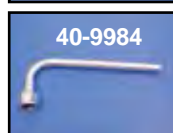
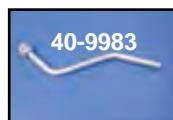
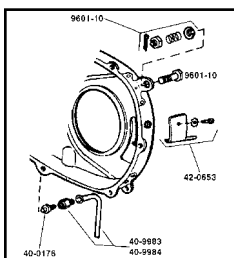
82 Links	76 Links	Year
18-0106*	18-0110*	1970-84
18-0107*	—	1965-69
18-0108*	—	1955-64
18-0117	—	1955-64
18-0109	—	1936-54

*Note: Units include compensator front sprocket assembly.

Primary Hardware



Chain Oil Kit contains cadmium plated oiler body, 63607-54, oiler adjusting screw, 63610-53, and nut and brass washer used on 1954-62 Panheads.
VT No. 2321-4

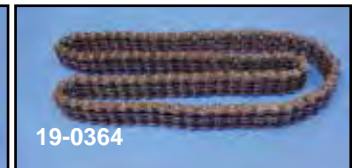


1954-64 Rear Chain Oiler Kit for 1954-64 replaces 63591-62 to fit on rear of inner primary cover. Kit includes screw.

VT No.	Item
42-0653	Rear Chain Oiler
40-0176	Oil Fitting
40-9983	Oil Drain 1936-57
40-9984	Oil Drain 1958-64
42-0589	Oil Guard
40-0835	Drain Fitting
10-0835	Oil Tank Fittings



Replica Primary Chain features Figure '8' Side Plates for reduced weight on Early models!



Diamond Endless Primary Chains.

VT No.	Size	Fits
19-0367	428 x 2 x 82	1936-64 Big Twin 74 and 80, Figure 8
19-0360	428 x 2 x 82	1965-84 Big Twin (Oval)
19-0392	428 x 2 x 80	Special Length
19-0363	35 x 3 x 92	1952-56 K-Model
19-0364	35 x 2 x 96	1938-up Servi-Car
19-0365	35 x 2 x 100	1929-52 Solo
19-0366	428 x 2 x 88	1930-36 VL Side Car
19-0380	428 x 2 x 90	1930-36 VL Solo
19-0361	428 x 2 x 76	1974-06 FLT/FXR



Primary Chain Connector Links are sold each for size 428 x 2 chain. Fits all Big Twins.

VT No. 19-0377



TYK Brand Primary Chains.

VT No.	Links	Fits
19-0878	76	1980-06 FLT
19-0876	82	1936-06 FL-FX
19-0877	82	Chrome, Link
19-0934	82	1936-64, Link



Duckworth Chain

19-0791	80	1941-84 FL, sidecar
---------	----	---------------------



Chrome Chain Primary Drive for Kick Start includes chrome 24T motor sprocket, nut, clutch drum, clutch springs, pressure plate and spring plate for splined motors. Fits 1955-84 FL and 1971-84 FX.

VT No.	Fits	Shaft
18-0963	1955-84	Splined
18-0964	1941-54	Tapered