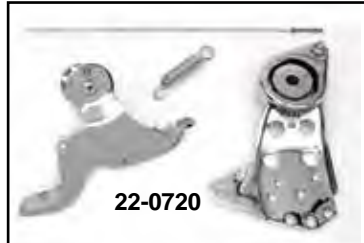




Foot Clutch Kit



Rocker Clutch Kit does not include clutch rod.

Chrome	Black	Year
22-0720	22-1016	1936-84
Chrome	Parkerized	Year
	22-0565	1936
22-1676	22-0997	1939-40
	22-0565	1936 Type
22-1678	22-1675	1936-38

Note: Clutch is released with pedal in forward position.



Components.

VT No.	Item
49-0471	Pedal, 1936-38
49-0472	Bracket, 1938-40
49-0476	Bracket, 1936-37

Note: Clutch is released with pedal in forward position.



Rocker Clutch Lever Rod and End.

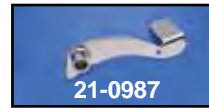
Cadmium	Chrome	OEM #	Years	Item
18-8302	18-3614	36918-36	1936-64	Rod
18-1223	18-3616	36917-65	1965-84	Rod
18-8304	18-3617	36916-36	1936-up	End
49-0046		36916-36	1936-73	End, Parkerized
7819-4	21-0205	33879-36	1936-84	Bolt

Clutch Lever Rods And Hardware.

Cad	Chrome	#	OEM	Years	Item
Foot Clutch					
18-0575	Cadmium		3671-36	1936-51	Rod
18-8302	18-3614	A	36918-36	1936-64	Rod
18-1223	18-3616	A	36917-65	1965-84	Rod
18-8304	18-3617	B	36916-36	1936-up	Rod End
7819-4	21-0205	C	33879-36	All	Rod End Bolt
18-8329	—				Rod End
18-0432	—				Rod End

Jiffy Stand or Shifter Mount Plate Bolt Kit to attach assembly to left side of frame. Fits 1936-99.

VT No.	Finish	Type
9617-18	Chrome	Hex for Mount Plate
9617-18T	Chrome	Hex
9618-18	Cadmium	Hex for Mount Plate
9619-18	Parkerized	Hex for Mount Plate
9619-18T	Parkerized	Hex for Mount Plate



Jockey Parts for all Big Twins with ratchet or jockey top.

VT No.	Item
21-0102	Pedal and plate
21-0103	Pedal only
21-0987	Pedal only
21-0104	Plate only
21-2023	Rod End
21-0934	Pedal and Plate



Rocker Clutch Cable Adapter fits all rocker clutch assemblies when fitted with a clutch cable. Fits 1941-85.
VT No. 22-0341