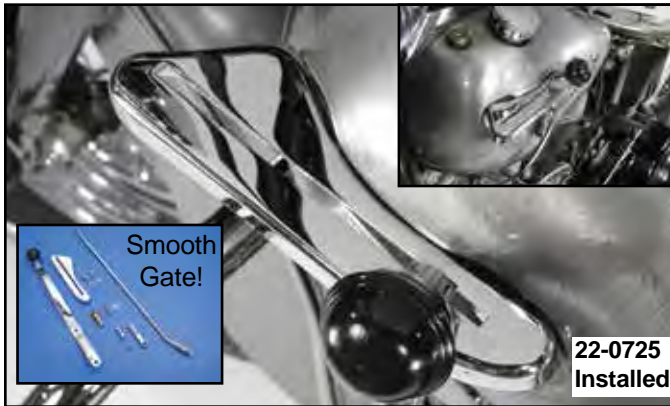




Big Twin Handshift



22-0725
Installed



22-0722
Installed

Chrome 4 Speed Ratchet Top Tank Shifter Kit features smooth gate, handle and rod and pivot bolt for 3.5 gallon tanks for years listed.

VT No.	Years
22-0725	1947-64
22-0722	1936-46



21-0905



22-1077

Shifter Lever Kit includes correct gate, rod, end, pivot bolt and shifter lever. Chrome shifter lever fits Big Twin for left side mounting. Note: Pattern from front to rear.

VT No.	Year	Item	Pattern
22-1077	1937-46	4-Speed	1N234
21-0907	1947-50	4-Speed with hook	432N1
21-0905	1951-65	4-Speed	432N1
22-1078	1947-65	3-Speed and Reverse	32N1R
49-0101	—	Smooth Gate	

Parts Available Separately

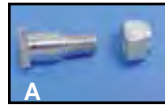
VT No.	OEM	Year	Item
21-1938	33675-37A	1938-73	Chrome Lever
21-0157	33675-37C	1965-73	Chrome Lever
21-0187	33675-37	1936-46	Chrome Lever
21-1937	33675-37A	1938-73	Painted Lever
21-0963	—	1936	Chrome
7818-5	33775-37	1938-73	Pivot Bolt Kit
7818-5T	33775-37	1938-73	Pivot Bolt Kit
21-1944	—	—	Chrome Lever



7818-5

Shifter Lever Stud And Bushing Kit contains necessary hardware required to mount shifter lever on Twins with handshift. Spring steel wave washer is furnished to help prevent rattles.

VT No.	Year	Finish
7818-5	1947-65	Cadmium
7818-5T	1947-65	Zinc
9711-5	1947-65	Parkerized
9711-5T	1947-65	Parkerized
9018-5	1947-65	Chrome
2582-3	1938-46	Parkerized
2581-6	1937-38	Cadmium



Hand Shifter Rods for stock style. Order end separately.

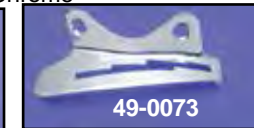
VT No.	#	OEM	Years	Type
21-0205	A	33879-36	1936-79	Shoulder Bolt
7819-4	A	33879-36	1936-79	As Above, Cadmium
9706-4	A	33879-36	1936-79	As Above, Parkerized
21-0204	B	33871-67	All	Rod End, Chrome
21-0231	—	—	1941-64	Rod End, Zinc
21-2070	As Above	As Above	All	Parkerized
21-2075	As Above	As Above	All	Cadmium
21-1940	C	33857-36	1936-50	Big Twin with hook end, Cadmium
21-2046	As Above	As Above	—	Chrome
21-1935	D	33857-51	1951-79	Big Twin, Cadmium
21-1951	—	33857-51	1951-79	Big Twin, Chrome
21-2044	—	33857-66	1951-79	Chrome
21-0723	—	—	8.25"	Chrome



49-0364



49-0107



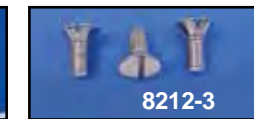
49-0073



49-0147



49-0076



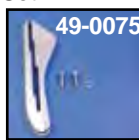
8212-3

1940-46 Shifter Gates for 61, 74" and 80" models. Pattern is noted from top to bottom.

VT No.	OEM	Speed	Type	Top to Bottom
49-0364	2209-36	4 Speed	1936 Chrome	1N234
49-0107	33785-40	3 Speed	Black	1N23
49-0073	33790-39	3 Speed	Chrome	1N23
49-0147	33791-39	3 & R	Chrome	R1N23
49-0076	33789-37	4 Speed	Chrome	1N234
8212-3	33822-36	3 & 4	Gate screws (3) Chrome	
37-9026	—	—	Screw Set	



49-0111



49-0075



49-0074



49-2569

Shifter Gates for late type Big Twin.

VT No.	OEM	Fits	Speed	Pattern
49-0111	33791-47	1947-65 FL & 1947-48 EL	3	32NIR
49-0075	33789-47	1947-66 FL, 1937-41 UL	4	432N1



Slotted Oval Head Screws are 5/16-24 x 23/32 long. to fit various applications such as stock air cleaner and tank shifter guide and replaces 33822-36.

VT No.	Type
8212-3	Chrome
9710-3	Parkerized
37-9026	Chrome (2)



21-0925

Forward Shifter Tank Kit includes chrome gate, lever and arm for 1936-46, 4 Speed model EL and FL.

VT No.	Item
21-0925	Kit
21-0945	Gate
21-0978	Gate, brass 4 speed
21-0893	Gate, 3 speed
21-0216	Arm
17-0504	Inner Arm