



Replica Brake Line



23-0716



23-0717



23-0601



23-0730



23-0719



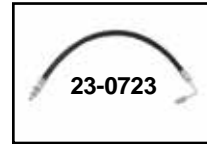
23-0720



23-2288



23-0732



23-0723



23-0741

Rear Brake Hoses are made of rubber, OE replacements. All hoses are D.O.T. approved.

VT No. OEM Years Model

23-0716 42300-58 1958-62 FL

23-0717 42300-63 1963-72 FL-FX

23-0601 7988 Hex Nut and Lockwasher for Above 7242

23-0719 45151-78 1979-83 FX

23-0720 42300-73A 1973-80 FLH

23-2288 40912-81 1981-84 FLH



23-2294

Hoses Listed are stock rubber construction and D.O.T. approved.

VT No. OEM Length Fits

23-0730 45120-72A 44½" 1972-81 FL-FLH

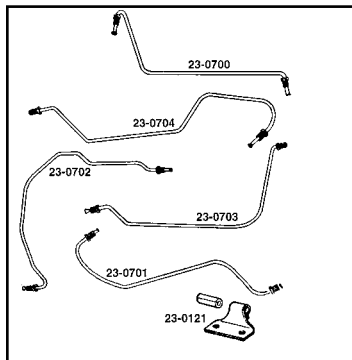
23-0732 45521-74A 40" 1974-77 XL-FX

23-0723 45121-77 19" Upper & Lower 1978-79 FX FXE, 1977-79 XL Lower only 1980-82 FX-FXE Lower only

23-0741* 45124-83 41" 1983 FXSB

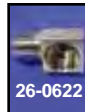
23-2294 45113-83 46" 1983 FXWG

***Note:** Hose is one piece dual disc hose with built in junction block.



Rear Steel Brake Lines are available in chrome or zinc plated. Front fits between master cylinder and junction. Rear is from junction toward rear caliper. Order rubber hose for final connection to rear wheel cylinder or caliper separately.

| Chrome | Zinc | OEM | Fits | Type |
|---------|---------|-----------|-------------|---------------------|
| 23-0700 | 23-0761 | 42302-58 | 1958-69 FLH | Front Section |
| 23-0701 | 23-0762 | 42304-70A | 1970-78 FLH | Front Section |
| 23-0704 | 23-0763 | 42304-79 | 1979-84 FLH | Front Section |
| 23-0703 | 23-0764 | 42301-58A | 1958-69 FLH | Rear Middle Section |
| 23-0702 | 23-0765 | 42303-70A | 1970-72 FLH | Rear Middle Section |
| — | 23-9023 | 45150-79 | 1979-83 FXE | Front Section |
| — | 23-9182 | 41004-82 | 1983-E84 FX | Front Section |
| — | 23-0121 | 42314-71A | 1970-84 FLH | Bracket |



26-0622



23-1988

Brake Hose Fittings for front master cylinder, chrome.

VT No. OEM Model Type

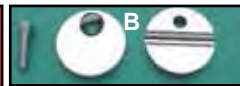
26-0622 43307-78 FX-XL Angle

23-1988 63609-72 FLH Straight

23-0517 Converts 10mm late threads to ½" NPT with inverted flare, early thread hose type, straight.



23-0517

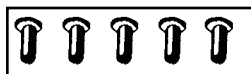


Front Chrome Brake Line Clamp fits under triple tree to secure stainless brake line. Mount hole is ¼ — 20.

VT No. Type

23-0675 A

23-0686 B



Clutch and Brake Brass Rivets.

| VT No. | OEM | Type | Use | U/M |
|----------|----------|------------|--------|-----|
| 37-8805 | — | Short 4-4½ | Brake | 100 |
| 37-8806 | 41871-31 | Long 4-5 | Brake | 100 |
| 37-8807* | 8226 | Short 7-4 | Clutch | 100 |

***Note:** For clutch hub friction disc.



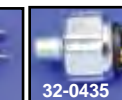
32-0425



32-0434



32-0426



32-0435



32-0443

1951-84 Hydraulic Brake Switch.

| VT No. | Type | Brand |
|---------|-------|---------|
| 32-0425 | Screw | Replica |
| 32-0434 | Screw | Accel |
| 32-0426 | Flag | Replica |
| 32-0435 | Flag | Accel |
| 32-0443 | Flag | Replica |