



Front Stainless Brake Line



FX Series Refer to next page for diagram.

*Note: D.O.T. approved.

Year	Model	Front	Type	Rear	Diagram#
1974-76	FX-FXE	23-8900	1	23-8915	19
As Above +4 Ext		23-8901	1	23-8915	19
As Above +8 Ext		23-8901	1	23-8915	19
1977	FXS	23-8902	5	23-8915	19
1978	FXS	23-8704	5	23-8803	6
1977-79	FX-FXE-FXEF	23-8703	5	23-8803	6
1979	FXS	—	5, 14	23-8803	6
1980	FXE-FXEF	—	5, 14	23-8803	6
1980	FXS	23-8712	5, 14	23-8803	6
1980-83	FXWG	23-8713	5, 14	23-8802	6
1980-81	FXB	23-8705	5, 14	23-8803	6
1981	FXS	23-8711	5, 14	23-8802	6
1981	FXWG	23-8711	5, 14	23-8802	6
1982	FXWG	—	5, 22	23-8802	6
1982	FXE	—	5, 22	23-8803	6
1982	FXS-FXB	23-8714	—	23-8803	6
1982-83	FXR	23-8732	5, 22	—	3
1983	FXWG-FXDG	23-8720	5, 24	23-8810	2
1983	FXE	23-8734	5, 24	23-8803	6
1983	FXSB	23-8733	5, 24	23-8810	2
1983	FXR-FXRS	23-8733	5, 24	—	3
1983	FXRT	23-8737	31, 22, 32	—	3



Brake Tee



Billet Aluminum Brake Tee

VT No. Type

23-9227 Front 3/8"-24 inverted flare in all 3 holes

23-9228 Rear 3/8"-24 inverted flare in 2 holes and 1/8" NPT in center hole

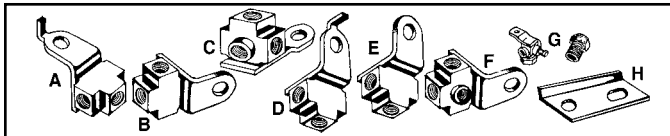


Universal Straight Chrome Union with bracket.

VT No. Thread

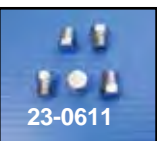
23-0635 1/8" NPT

23-0688 3/8" - 24



Chrome Billet Round Brake Tees. VT No. 23-3771 is for dual disc applications. VT No. 23-3770 has counterbored mounting.

VT No.	Style	Holes	Thread
23-3768	Inverted	3	3/8" — 24
23-3769	Inverted	2	3/8" — 24
	NPT, Center	1	
23-3770	NPT	3	1/8"
23-3771	Thread	2	3/8" — 24



Chrome Front and Rear Replacement Brake Tees.

Front	OEM #	Model
23-0706	43308-78 A	1978-79 FX
23-0708	44311-80 B	1980-82 FXWG
23-0705	43310-77 D	1977 FXS & 1979-84 All FX models except FXWG
		1979-81 XL, XLCH, XLS
Rear	OEM #	Model
23-0709	83566-51 C	1958-69 FL
23-0707	42318-72 E	1972-84 FL, 1977-79 FX, 1980-82 FXWG
23-0710	42309-70 F	1971-72 FX and 70-83 with sidecar
23-0611	42311-58 G	Brake Tee Plug 5 pack
23-0027	45152-78 H	Tee Bracket FX-FXST Chrome



Chrome Steel Brake Line Tees have a 5/16" mounting hole.

VT No.	Type
23-0570	Center hole inverted flare 3/8"- 24 UNF, side tubes 3/8"- 24 UNF
23-0571	Center hole 1/8" - 27 NPT, side tubes 3/8" - 24 UNF
23-0572	Center hole and side tubes 1/8" - 27 NPT
23-0939	Maltese Style