



Rear Caliper Kit



23-0539



23-0798

1973-80 FX-FL Black or Chrome Caliper with chrome bracket set. Caliper includes all internal parts.

VT No.	Type
23-0539	Chrome
23-0798	Black

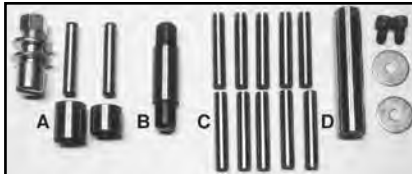
Caliper Rebuild



Brake Rebuild Kit includes all components pictured to fit 1973-80 banana rear calipers. Kit also includes an oversize ground pin to repair elongated mount hole in caliper body. **VT No. 23-1756**



23-0113

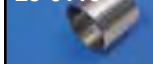


23-0114

B

D

23-0113



(A) Caliper Pin Replacement Kit for Big Twin eliminates brake squealing, grinding, caliper wobble. Kits include mounting stud, locknut and washer, 2 brake pad pins and stainless steel caliper mounting bracket bushing. Replaces 44331-73 for 1973-80 Big Twins.

VT No.	OEM	Item
23-1727	Kit	Complete
23-0113	45822-75	Short Bushing
23-0114	45821-75	Long Bushing

(B-C) Rear Caliper Parts are available as complete rebuild kit or as individual parts.

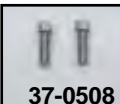
VT No.	#	OEM	Item
23-1732	B	44107-72	Mount Pin, each
23-1733	C	44124-72	Pad Pins, 10 pk

(D) Oversized Caliper Mounting Pin Rebuild Kit replaces stock mounting pin, by boring caliper hole oversize. Gives longer life of caliper housing before replacement. Complete kit with instructions.

VT No. 23-1736

Chrome Caliper Mount Bolt Kits mount through caliper to bracket on Big Twins.

VT No.	OEM	Type	Year/Fits
23-1726	44134-72A	12 Point	1973-80 BT, Rear 1972-80 BT, Front
2088-8	44134-72A	Allen	1973-80 BT,Rear 1972-80 FL,Front
37-8672	—	Allen	As Above,Front
23-0600	44132-72	Washers	For Above
37-0508	44201-82	Allen	1982-84 FX, Rear
37-0508T	As Above	Allen	1982-84 FX, Rear



37-0508

Caliper Thread Chart

OEM Calipers
Front: All 1984-2002 Single Disc Calipers
 3/8-24 banjo bolt
Rear: All L1987-2002 Big Twin, TC/B, XL
 3/8-24 banjo bolt
Front: All 11984-2002 Dual Disc Calipers
 3/8-24 banjo bolt
Rear: 1982-Early 87 FXR, XL; 84-Early 87 FXST; 83-86 FXWG
 3/8-24 banjo bolt
Front: 1977-83 FX, FXWG, FXR, XL
 3/8-24 Inverted Flare
Banana Caliper 1973-83 FL, FX, XL
 1/8 NPT



1972-84 Front and 1973-80 Rear Chrome Caliper Cover includes mount studs.

VT No.	Item
42-0312	Cover Kit
37-0093	Stud Set Only



Disc Caliper Bleeder Screw Repair Kit for replacing stripped threads in 1972-83 alloy caliper housing.

VT No. 23-0110



37-8265

Bleeder Screws available in 10 pack.

VT No.	OEM	Size	Fits
23-0711	41749-58	1/4 — 28	1958-77 Caliper and Wheel Cylinder
37-8264	Chrome	1/4 — 28	As Above, 5 pack
23-1731	44146-77	3/8 — 24	1977-86, Late 1987-89 Front or Rear Calipers
37-8265	Chrome	3/8 — 24	As Above, 5 pack

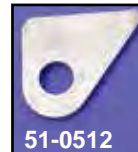


Speed Bleeders by Russell feature a built in check valve and replaces the original bleeder screw for a permanent installation. Sold in pairs.

VT No.	Size
23-0520	1/4"
23-0521	3/8"



51-0511



51-0512



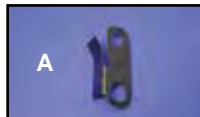
51-0513



51-0845

Weld On Mount Tabs fit Rigid Frames when mounting brake units.

VT No.	Type
51-0511	Hydraulic Rear Back Plate
51-0512	Caliper Arm Tab
51-0513	1987-99 Caliper Mount Strap (Right Side)
51-0845	1987-99 Caliper Mount Strap (Left Side)



A



B



C

Vibration Clips fit as replacement to dampen pad rattles.

VT No.	#	OEM	Year	Type
23-1753	A	41768-73	1973-78	Front, FL
23-0112	B	41670-73	1973-81	Rear, FX-FL
23-9176	C	44211-82	1981-83	Rear