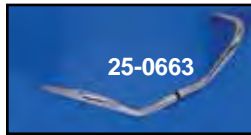




Chrome Duo-Glide Bar Set is a chrome stock type with switches and cables installed. Fits 1960-64 FL.

- VT No. Item**
25-0662 Bar Set
25-0933 Bar Assembly
25-0941 Bar Set (Throttle Only)



Two Piece Bars. Original Buckhorn type, knurled to fit stock riser block on 1960-78 FL, 1" diameter on both ends enables snap throttle to be used.

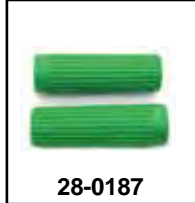
VT No. 25-0663



Replica Chrome Cross Bar Kit includes fluted tube and two stainless clamps for FLH models.

- VT No. Item**
49-0153 Cross Bar
31-0530 Clamp Set Only
37-1969 Bolt Set

Grips



1962-72 Rib Style Grips.

- VT No. Color**
28-0118 Black
28-0119 White
28-0184 Red
28-0185 Blue
28-0186 Yellow
28-0187 Green



Replica Waffle Grips are replacement for 56212-53 on 1949-61, in 1 1/8" size or 1974-up late type 1 1/8" size. Available in pairs. Order chrome plugs separately.

VT No.	Color	Year	Inner Diameter
28-0159	Black without plug hole	1949-72	1 1/8"
28-0110	Black with plug hole	1949-72	1 1/8"
28-0111	White	1949-72	1 1/8"
28-1985	Black with chrome plugs	1974-up	1 1/8", 1" left grip
28-0134	Black with chrome plugs	1953-72	1 1/8"
28-0121	White	1974-84	1 1/8"

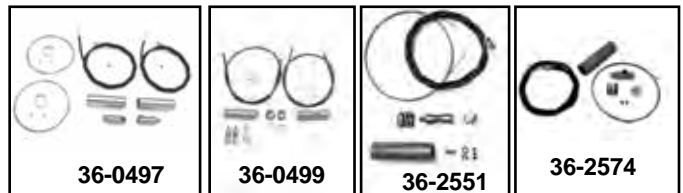
Handlebar



Early Glide Bars use stock internal components for years listed. Available in one piece with reinforced center or two piece type. Some hand fitting internals required.

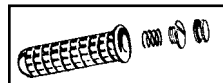
VT No.	Note	Type	Fits	Piece
25-0697		Bar Only	1949-53	1
25-0601	A	Assembly	1949-53	
25-0661		Bar Only	1954-59	1
25-0600	B	Assembly	1954-59	1
25-0602	C	Assembly	1954-59	
25-2180		Bar Only	1965-73 FL-FLH	2

A Complete with Push Throttle/Spark/Switches
 B Complete with Push Throttle/Push Spark/Switches
 C Complete with Pull Throttle/Push Spark/Switches



Order Internals Separately Listed Below

VT No.	Item	Year/Fits
36-0497	Throttle Spark	1949-53 Two side, push
36-0499	Throttle Spark	1954-64 Two side, push
36-2551	Throttle Only	1954-73 One side, push
36-2574	Throttle Only	1954-73 One side, pull
36-0073	Cable Wire Set	



Grip Hole Plugs for 1953-61 are zinc plated with groove, pair. **VT No. 28-0625**



Chrome Hole Plugs for 1960-84 snap in as replacements.
VT No. 28-0618