



Spring Fork Fender



Spring Fork Front Fenders are 7½" wide for 16" or 18" wheels with riveted on wide braces. Big Twin fits with outside rockers.

VT No.	Year/Model
50-0144	1936-48 Big Twin
50-0750	1936-46 Big Twin

Separate Pieces

51-0540	Lower Brace Set 1936-48 Big Twin
50-0182	Skirt Set Only Right and Left
50-0779	Fender without Braces



Stainless Fender Trim for 1939-48 Big Twin and 45", 1940-49 Spring fork front Includes clips.

VT No.	Fits
50-0914	Front
37-8458	Clips, 25 pack



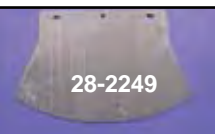
Bobber Fender is 6" wide without holes. Order bracket to mount to spring fork rear leg tabs. Fits 1936-57 Spring Forks.

VT No.	Item
50-0883	Fender
50-1566	Bracket



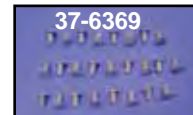
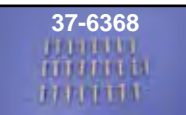
Mud Flaps. Stock type for front and rear fenders for Big Twin.

VT No.	Type	Color	Note
28-0701	Rubber	Black	Plain
28-0702	Rubber	White	Plain



Early Mud Flap replaces 59235-26 in rubber with laminated cloth construction.

VT No.	Item
28-2249	Mud Flap
49-0425	Mount Hardware



Replacement Fender Rivets fit all FL front and rear fenders and FX front fenders, pack of 25.

VT No.	Fits
37-6368	Big Twin Fender Brace
37-6369	Big Twin Fender Top
37-6370	FX Front, 1973-up Stainless



Replica Front Fenders feature two piece spot welded skirt panels and correct width braces.

VT No.	Year	Model
50-0894	1936-46	Big Twin
50-0895*	1936-46	Big Twin
50-0751	1947-48	Big Twin
50-0760		Fender Body Only
50-0474		Bobbed

*Note: 50-0895 has fender lamp holes. All other are without fender lamp holes.

Front Fender Mounting Kit is used to install stock front fenders on 1936-57 Spring Forks.

VT No.	Item
8203-6	Kit, Cadmium
9680-6	Kit, Parkerized
9742-6	Kit, Chrome
8009-2	Locks Only
50-0730	Brace Set
50-0734	Reinforcement Plate



Universal Springer Style Fender for 18, 19, and 21" wheel. Brackets must be fabricated.

VT No. 50-0780

Note: All Items Shipped with a Raw Finish may have some oxidation (rust on surface)!