



Rigid Rear Fender



50-0143



50-0180



50-0156



50-0744



50-0142



50-0880



50-0892



50-0280



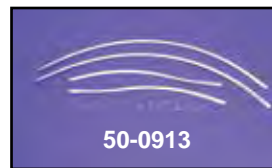
50-0157



50-0283



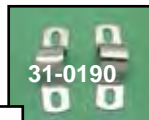
50-0284



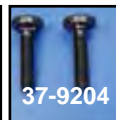
50-0913

Stainless Fender Trim for Rigid rear 1939-48 Big Twin. Includes clips.

VT No.	Fits
50-0913	Rear
37-8458	Clips, 25 pack



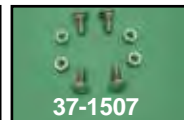
31-0190



37-9204



31-0457



37-1507



50-1054



50-0525



50-0557

Fender U Clamp is used on 1936-57 Rigid models secures rear fender to frame cross tube. Replaces 59800-36.

VT No.	Finish	Note
31-0190	Chrome	Order chrome carriage bolts separately
31-0457	Parkerized	Order chrome carriage bolts separately
37-9204	Black	Bolt set, when using rear frame bar
37-1507	Chrome	Carriage bolts



50-1010



Rigid Rear Fender Mounting Kit includes hardware to install rear fender on 1936-57 Big Twin.

VT No.	Finish
8202-18	Cadmium
9708-18	Chrome
9707-18	Parkerized
2493-6	Parkerized
2460-2	Parkerized

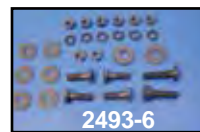
Rigid Rear Fenders. VT No. 50-0143 and 50-0141 feature relief over skirts to accept stainless fender trim attached by clips. Fully assembled and riveted together with hinge. VT No. 50-0142 has smooth skirts for 1949-57 Rigid Big Twin and VT No. 50-0744 has fender plate built in.

Big Twin

VT No.	Fits
50-0143	1939-54
50-0180	1936-39
50-0156*	1939-46 with Narrow braces
50-0157*	1947-48 with Wide braces
50-0744	1949-51
50-0142	1949-57
50-0880	1936-57 Bobbed
50-0892	1936-57 Bobbed
50-0280	1936-57, Short
50-0283	1936-46, Short
50-0284	1936-50, Short
50-1054	1939-46, Tail Only
50-1053	1949-54, Tail Only
50-1199	1955-57, Tail Only No Cut Out
50-0525	1949-57, Straps
50-0349	1936-46 Narrow Brace Set
50-0348	1946-57 Rear Fender Brace Set
50-1010	Fender Plate
50-0449	Rear Fender Raw Brace
50-0525	Rear Fender Raw Brace, 1949-1957
50-0549	Rear Fender Tail End, 1949-53

*Note: Features two piece spot welded skirt.

Note: All Items Shipped with a Raw Finish may have some oxidation (rust on surface)!



2493-6



Stainless Steel Strip Set is shown installed on a Rigid Fender. VT No. 50-1045



Accent Bars for Rigid Rear Fender
VT No. 2634-12T



50-0283



50-0284

Raw Rigid Rear Fender Assembly.

VT No.	Fits	Year
50-0283	Without tail end hinge	1936-48
50-0284	Without tail end hinge	1949-51

Rear Fender Mount Raw Steel Mount Brace Set.

50-0348	1946-57 FL
50-0349	1941-46 FL Narrow