



# Knucklehead Exhaust

29-1116



29-1115



**Batique Pipe End** fits over exhaust tube as noted. Sold each.

<b>VT No.</b>	<b>OD</b>
30-0793	1 3/4", Chrome
30-1376	1 3/4", Black
30-1393	1 7/8", Chrome



29-1115 Installed

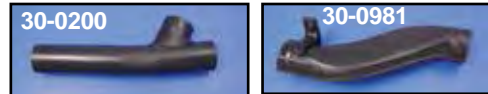
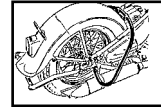
1936-47 Knucklehead Two Into One Exhaust are designed to replace stock style 1 3/4" outside diameter pipe systems.

**Replica 3 Pc Finish**  
 29-1116 29-0182 Chrome  
 29-1115 29-0181 Black



**Replacement Muffler With Built-In Y-Pipe.** Replaces 65201-37. Used on 1936-40 Knuckle, 1936-40 UL.

<b>VT No.</b>	<b>Type</b>
30-0995	Black, Replica
30-0165	Black
30-0166	Chrome
30-0438	Black Tip



1936-47 Knucklehead Exhaust Pipes. Flat connector pipe features exact riveted construction as original. Y-Pipe features factory style saddle.

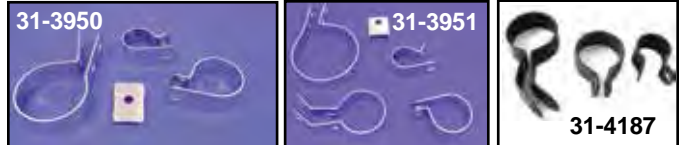
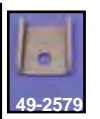
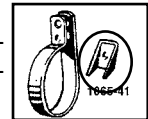
<b>Chrome</b>	<b>Black</b>	<b>OEM</b>	<b>Type</b>
30-0177	30-0261	65440-36	Front
30-0176	—	65493-36	Rear
30-0746	30-0981	65465-36	Flat
30-0199	30-0200	65505-41	Y-Pipe
—	30-0981	65465-36	Flat
<b>Replica Type</b>			
30-0762	—	65440-36	Front
30-0748	30-0747	65493-36	Rear
30-0746	30-0981	65465-36	Flat
30-0864	30-0975	65505-41	Y-Pipe

**Note:** Three and four Piece Replica Exhaust Systems require hand fitting during final assembly. We suggest to loosen motor mount bolts during installation to allow pipes to adjust to motor position then re-tighten engine bolts.



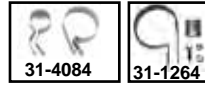
**Rear Hanger Reinforcement Clip** braces rear muffler clamp at mount bolt. Body clamp not included.

<b>VT No.</b>	<b>Finish</b>	<b>Year/Model</b>
49-2577	Black	1930-36 UL
49-2578	Black	1936 EL, 1937-40 UL
49-2591	Chrome	1936 EL, 1937-40 UL
49-2579	Black	1941-47 FL
49-2592	Chrome	1941-47 FL



**Exhaust Pipe Clamp Sets** complete in black or chrome for single exhaust. Number of clamps in each kit shown.

<b>Chrome</b>	<b>Black</b>	<b>Year</b>	<b>Model</b>	<b>Clamps</b>
31-3950	31-2125	1936-1940	Knucklehead	3
31-3951	31-2126	1941-1947	Knucklehead	4
31-2930	31-4187	1941-1947	Knucklehead	3
2772-22	2719-22	1936-57	Bolt Set	



**Rear Clamp Kit** with reinforcement clip for 1941-57 BT.

<b>VT No.</b>	<b>Finish</b>	<b>31-4084</b>	<b>Chrome Set</b>
31-1264	Parkerized	31-4085	Parkerized Set
31-1269	Stainless	31-9009	Parkerized Set
31-1295	Parkerized		
31-1297	Chrome		

**Chrome Knucklehead Drags** fit 1936-47 models 61 and 74", 1 3/4" inner diameter.

<b>VT No.</b>	<b>Item</b>
30-3120	Pipes
31-2101	P-Clamps



**Clamps Not Included With Header Sets.**



**Watch Our Video!**  
<http://www.youtube.com/user/TeddCycle?feature=watch>



**Caution:** These exhaust products are not legal for sale or use in California on pollution controlled vehicles. These products are intended for non-highway only.

