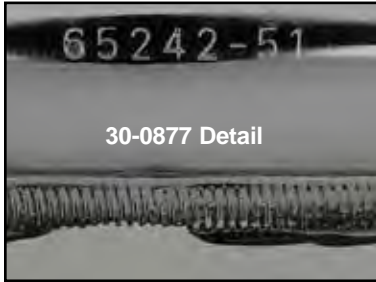




# Cigar Muffler



30-0877 Detail



30-0564



30-0441

Muffler/Trumpet Set for 1958-84 FLH.

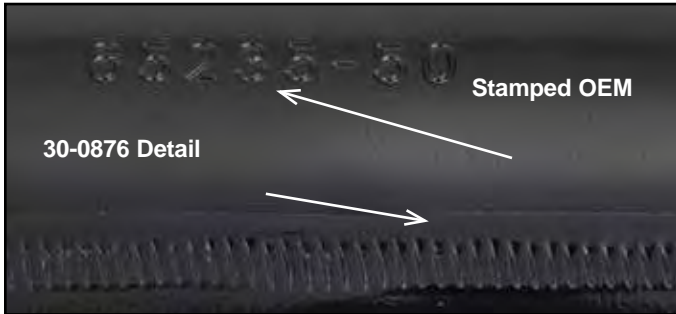
VT No.	Type
30-0564	Dual
30-0441	Single



30-0877



30-0189



30-0876 Detail

Stamped OEM



30-0189 Installed



Show Quality for Restoration!

Original Seam Type Construction

30-0876



30-0189 Installed



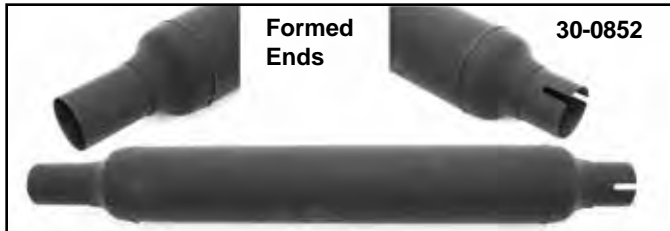
30-0220



30-0143



30-0282



Formed Ends

30-0852



30-0398



30-3189

30-0877, 30-0876, 30-0398 feature original seam type construction. Cigar Mufflers replace 1950-66 FL-FLH, 1 1/4" inlet, 3 1/4" body diameter. Kit includes two mufflers and clamps. \*Note: Not seam-less.

VT No.	OEM	Fits	Length	Brand
30-0877*	Chrome	1950-57	24"	Replica
30-0876*	Black	1950-57	24"	Replica
30-0143	65235-50	1950-57	24"	V-Twin
30-0852	Black	1950-57	24"	V-Twin
30-3189	Chrome	Kit		Pair
30-0189	65235-50	1950-57	24"	DCC
30-0339	65235-50	1950-57	24"	Black
30-0220	65236-58	1958-66	22"	DCC
30-0282	65236-58	1958-66	22"	V-Twin
30-0398*	65236-58	1958-66	22"	Replica



Caution: These exhaust products are not legal for sale or use in California on pollution controlled vehicles. These products are intended for non-highway only.

