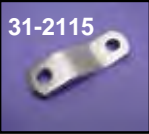




Exhaust Brackets are 1" wide x 1/8" thick for mounting goodies, pairs.

VT No.	Type
31-9971	3" Short
31-9972	4 3/4" Long
31-9973	L Bend 1" x 3 3/4"



Offset Chrome Exhaust Strap Brackets.

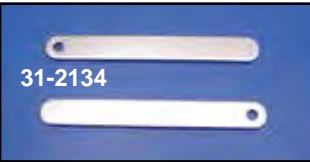
Straight strap 6" long, 3/8" holes. Offset 2" between 3/8" holes. Made from 1/8" steel.

VT No. 31-2115



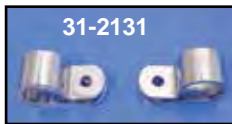
Chrome Brackets. Sold in pairs.

VT No.	Note
31-0676	With 3/8" holes (A)
31-0677	With 1/2" holes (B)



Universal Chrome Straps are sold in pairs.

VT No.	Length
31-2133	3"
31-2134	6"
31-2135	8"



Frame Mounting Clamp is 1" clamp for mounting exhaust pipes or footpegs. Sold in pairs. Order bolts and nuts separately.

VT No.	Finish
31-2131	Chrome
31-0273	Black, P-Type Clamp



Chrome Frame Clamp to fit frame for exhaust bracket mounting, each.

VT No.	Size
30-0094	1"
30-0093	1 1/8"

Exhaust Clamp

Exhaust Mount Clamps (2" and under).

VT No.	I.D. Size	Style	Length
31-3947	1"	"P" shape	Long
31-2100	1 1/2"	Hanger	Long
31-2101	1 3/4"	Hanger	Long
31-2146	1 3/4"	"P" shape	Short
31-1011	1 3/4"	"P" shape	Long
31-0816	1 7/8"	"P" shape	Short
31-2105	1 7/8"	Hanger	Long
31-2102	2"	"P" shape	Short



Muffler Mount Clamps

VT No.	I.D. Size	Style	Length
31-2120	2 1/2"	Hanger	Long
31-2106	2 1/2"	"P" shape	Short
31-2119	2 1/4"	"P" shape	Short
31-2108	3"	Hanger	Short
31-1977	3 1/2"	Hanger	Short
31-2107	2 3/4"	Hanger	Short



Chrome Pipe Clamp with angle.
VT No. 31-2104



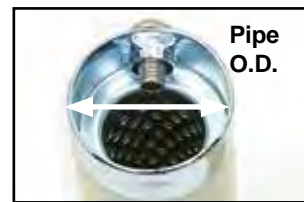
Chrome Muffler End Clamps. 1 5/8" for use when attaching muffler to 1 1/2" tubing.

VT No.	I.D. Size
31-0270	1 5/8"
31-2132	1 3/4"
31-2103	1 7/8"
31-2144	1 7/8" Heavy
31-1007	1 7/8" Super
31-9914	2"
31-0283	2 1/4" Narrow
31-2099	2 7/8"
31-2141	3"
31-1977	3 1/2"
31-2109	3 1/4"
31-4016*	3 1/4"
31-1012	3 1/2"
37-8683	Bolt Set



*Note: Stainless steel sold each

Baffle Set



Baffle	Length							
	8"	8.25"	8.5"	9"	10"	10 1/2"	11 1/2"	O.D.
30-1419								1 3/8"
30-1405								1 5/8"
30-1416				30-1410	30-1407	30-1411	30-1412	1 7/8"
						30-1434		2 1/16"
	30-1417	30-1414			30-1406			2 1/8"
30-1418					30-0351			2 1/4"
						30-1408	30-1409	2 1/4"
30-1415								2 7/8"