



Replica Distributor



32-0821



32-0810

Electronic Distributor Top.
Electronic Mechanical Year
32-0821 32-0810 1930-47

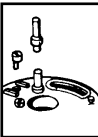


Single Point Distributor Parts for 1949-60 manual advance models.

VT No.	OEM	Item
37-9235	30507-47A	Eccentric Screw
8146-10	3779, 7035	Circuit Breaker Screws Cad
8145-10	3779, 7035	Circuit Breaker Screws Chrome
10-0717	32525-36A	Bushing
32-0198	32531-36	Timer Gear
32-0029	215	Gear Pin, 1940-65
32-0047	32579-49	Breaker Base Only
32-0134	32585-36	Base Retainer
32-1286		Base Retainer Kit
32-0046	32593-47	Adjuster Screw
2632-3	As Above	Colony
Kit	32594-47	and Plate Kit
32-0154	32676-49	Wire Stud
32-9265	32690-30	Distributor to Coil Wire
32-9340	32690-30	Distributor to Coil Wire, OE
32-0576		Delco Condenser

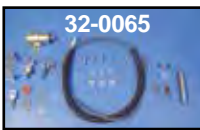
Thrust Washer Timer Shaft for 1948-64, 5 pack.

VT No.	OEM	Width
10-1269	32535-48	.062"
10-1270	32535-48	.066"
10-1272	32538-48	.076"



Circuit Breaker Post Kits replaces fiber bushings and pin, the 1948-69 type includes pin only. Both include installation tool.

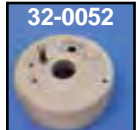
VT No.	Fits	Wire
8848-6	1930-48 All Models	2542-10
8849-2	1948-69 All Models	2543-10



32-0065



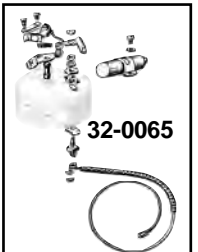
32-0068



32-0052



32-0047



32-0065

Distributor Top Rebuild Kits include points, condenser, wire, washers, bushings, studs, and hardware. Order breaker base separately.

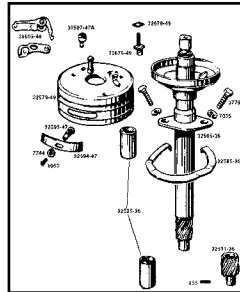
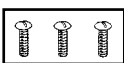
VT No.	OEM	Years
32-0065	Kit	1936-47
32-0068	Kit	1948-60
32-0052	32575-37	1937-47 Base Only
32-1291	Kit	1937-47 Base Only
32-0047	32879-49	1948-60 Base Only
32-1312		Bare Assembly



32-1291

Circuit Breaker Screws to mount distributors and relay on 1936-64, 61, 74 and 80 models, 10 piece.

VT No.	Finish
8146-10	Cadmium
8145-10	Chrome
9684-10	Parkerized
7130-10	Acorn



32-1286



32-0060 Installed

Replica 1936-47 Complete Distributors are fully assembled with natural alloy finish base with shaft and gear installed. Top housing includes early point set with spring and condenser. Stainless advance band, chrome top and clip, base retainer and points wire.

VT No.	Item
32-0060	Distributor
8146-10	Mount Kit
15-1030	Gasket

Distributor for 1936-48 45 and UL are two bolt manual advance style featuring natural alloy finish base with shaft and gear installed. Top housing includes early point set with spring and condenser. Stainless advance band, chrome top and clip, base retainer and points wire.

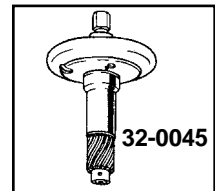
VT No.	Item
32-0061	Distributor Assembly, Complete
9414-8	Chrome Screw Kit
32-0045	Base with Gear
49-0214	Base Only
49-0895	OE Base Only
32-0134	Retainer
15-1031	Mount Gasket
15-0154	Mount Gasket



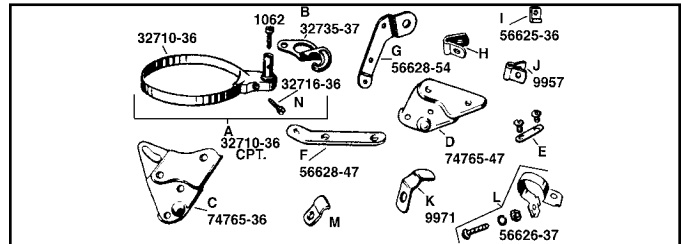
49-0895



32-0061



32-0045



Distributor Bands, Brackets and Relay Mount.

45+	OHV	#	OEM	Item
49-0072		A	32710-36	Band Kit, All
49-0060		B	32736-37	Bracket 45 SV
	49-2010	B	32735-37	Bracket 74 & 80
	49-0216	C	74765-36	Relay Mt 1936-46
	49-2534	D	74765-47	Relay Mt 1947-64
32-1324	32-1324	E	32666-30	Points Plate Spring
13-9239		F	56628-47	Washer, 5 pk
31-9904		F	56628-47	Spark Cable
		G	56628-54	Bracket, 1947-53
31-5013		H	10046	Horn Bracket
37-8971		I	56625-36	Breaker Wire Clamp
37-9154		J	9957	Clamp
37-9155		J	9957	Clamp
2586-1			As Above, Colony	
2587-1			4726-36A	Clamp
31-0276		K	9971	Wire Clamp
37-0268		L	56626-37	Timer Cable to
		L	56626-37	Frame Clamp 1937-46
31-0267		M	—	Timer Cable to
		M	Frame Clamp	1947-64
37-9028		M	56609-52	Timer Cable to
		M	56609-52	Frame Clamp
49-0361		N	32716-36	Band Screw
49-1256			1634-36	Band Block
32-1189			1634-36	Stud