



Linkert

Linkert Stuff Cad!



Linkert Throttle Levers.

Brass	Cadmium	OEM	Fits	Year
35-0795	35-9081	27252-37	SV	1936-52
35-0796	35-0784	1238-36	OHV	1936-47
35-0797	35-0780	27260-40	OHV	1941-47
	35-9081		OHV	1941-47
	35-0753	27260-48	Throttle Lever	
	35-0984	27260-37	Throttle Lever	
35-0341			Screw Kit	



Cadmium Plated Linkert Components.

VT No.	Item
8902-4	Carburetor Bowl Lock Nut
2681-4*	Plug and Screw Kit Note: Brass finish
2658-5	Carburetor Throttle Lever Wire Block
35-0781	Needle Valve Lever
2598-1	Needle Valve Lever Screw
2695-5	Low Speed Needle
2643-2	Needle Valve Lever Spring with collar
35-0782	High Speed Needle Valve, 27297-27
35-0781	Needle Valve Lever, 27395-27
Linkert Carburetor Parts.	
35-0345	Nylon Bushing Kit
35-0474	Throttle Shaft
35-0582	Float Bowl with flat top
35-0693	Throttle shaft
35-0723	Manifold Spigo
35-0746	Bombsight Venturi
35-0829	Throttle Disc
35-0836	1-1/2" Bombsight Venturi Kit
35-0925	Hardware Kit
35-0936	DC-2 Carb
35-1000	Needle Valve Lever
35-1287	SV Choke Disc Kit
35-9114	Linkert Choke Lever
35-0016	Flanders Linkert Carb Bracket
15-0298	S&S Float Bowl Gasket
15-0453	Linkert Carb to Manifold Gasket
15-0547	Carburetor to Manifold Gasket
15-1294	Linkert Carburetor Gasket Kit
35-0283	L"Series Carburetor Assembly
34-1352	Backing Plate



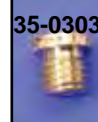
Linkert Patch.
VT No. 48-1343



Linkert Snap Throttle Kit.

VT No.	Kit	Throttle Only
36-0934	1/4 Turn	35-0782
36-0947	Standard	35-0071

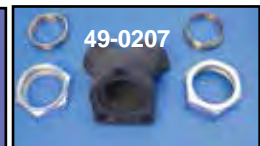
"L" Series



"L" Series Parts.

VT No.	Item	35-0788	35-0840
13-0932	Idle Screw	Bowl Dual Kit	Sub Assembly Kit
35-0287	Jet Kit	35-0977	Body
35-0303	Air Bleed Jet	35-0980	Bowl
35-0656	Throttle Shaft	35-0981	Carb Throttle Return Spring Kit
35-0657	Throttle Door	35-0998	Throttle Arm & Door
35-0658	Spring	35-1673	Choke Door Kit
35-0659	Kit	35-1703	Fixed Jet
35-0660	Screw	35-0965	Jet Kit
35-0663	Main Nozzle Dis. Tube	35-1280	Complete Carb "L"
35-0752	Arm	35-0939	Shaft
35-0762	Dual Bowl Mount		
35-0664	Throttle Arm		

Mikuni Carb



45" Mikuni Carburetor Kit includes 34mm Mikuni Carb, Adapter Flange to fit 1936-52 Stock Manifold 27024-36, Anderson style 1" twist grip assembly, air cleaner and cable. Order VT No. 49-0207 manifold separately.

VT No.	Item
35-0107	Carburetor Complete Kit
49-0207	Replica Manifold
34-0534	34mm Air Cleaner
34-0521	Cleaner Adapter
48-0671	Mikuni Parts and Information Manual



48-0671