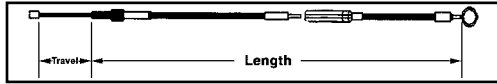




Clutch Cable



Clutch Cable



Big Twin Clutch Cable Assemblies feature heavy duty construction designed for reliability and longer service. Assemblies are available by V-Twin or Barnett in black vinyl or braided stainless covering.

V-Twin Stainless	V-Twin Black	Barnett Stainless with Clear Coat	Barnett Black	OEM	Fits	Length
36-0500	36-0400	36-1526	36-2355	38618-52	Stock 1952-67 Big Twin with mousetrap	31"
—	36-0401	—	—	—	+4" Extension. As Above	35"
—	—	36-1527	36-2356	—	+8" Extension. 1952-67 Big Twin	39"
36-0502	36-0402	—	—	38618-68	Stock 1968-83 Big Twin, 1984-85 FXST, 1986 FXWG	52.56"
—	36-0403	—	—	—	+4" Extension. As Above	56"
36-2521	—	—	—	—	+8" Extension. As Above	60"
—	36-2536	—	—	—	+12" Extension. As Above	64"
—	36-0411	36-1528	36-2496	38618-68	Stock 1968-83 Big Twin, 1984-85 FXST, 1986 FXWG	51.625"
—	—	—	—	—	Nylon Lined Small Diameter Casing	—
—	—	36-1529	36-2497	—	As Above	59.75"
—	36-0398	—	—	38618-68	Stock 1968-83 Big Twin, 1984-85 FXST, 1986 FXWG	52.25"
—	—	—	—	—	Extreme duty 1/2" diameter type	58.25"
—	36-0399	—	—	—	+6" Extension As Above	—
—	—	36-0692	36-2359	38599-80A	Stock 1980-82 FLT-FXR-FXRS 1/8" Cable	57.75"
36-8058	—	—	—	38599-80B	Stock 1980-82 FLT-FXR-FXRS	55.44"

Handle Assembly



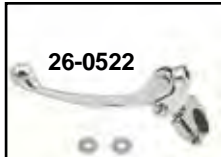
Clutch and Brake Lever Assemblies include cable pin. Available chrome or polished with 3/8" or 5/16" hole sizes for cable entry. **Note:** VT No.



26-2167 and 26-2168 accept front brake switch.
Chrome Polished OEM Hole Fits
26-0523 26-0524 38608-68 3/8" 1968-72 Big Twin Clutch
26-0525 26-0526 45002-65 5/16" 1941-68 Big Twin Brake
 1952-67 Big Twin Clutch
26-2167 26-2168 45002-69 5/16" 1969-72 Brake Big Twin



Complete Replica Lever Assemblies include slotted lever bushing as original with small hole for brake or clutch.
 Complete **VT No. OEM Finish**
26-0954 26-2127 45002-41 Chrome Complete, Brake
26-0953 26-2126 45002-41 Polish Complete
26-0950 Polish Brake
26-0951 Chrome Brake
26-0957 Polish Brake



Ball End Stainless Style Assemblies

26-0522 Ball End 5/16" Complete
26-0152 Screw Polish
26-0779 3/8" Hole Polish

Lever Components

26-2192 — Chrome Stock Lever Only
26-0542 — Lever Clamp Strap
8819-4 45031-41 1941-64 Pin and Nut, Cadmium
26-0506 45033-49 1949-64 Lever Bushing with cotter

Hand Lever Pivot Pins for brake and clutch sides.

VT No. OEM Item
8819-4 45031-41 1941-64 Pin and Nut, Cadmium **26-2129**
26-0507 45031-65 1965-81 Pin and Clip, 10 pack
26-0544 — 1965-81 Pivot Pin Set with grease fitting
12-0939 11036 Retaining Ring for Above, 10 pack
26-2129 45032-82 Pin, each
12-0944 11143 Retaining Ring for Above, 10 pack



Chrome Clutch Cable Bracket bolts to engine bolt to route cable away from cylinder heat, and align cable to clutch arm. Fits 1980-86 5-speed.

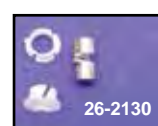
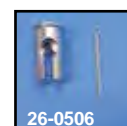
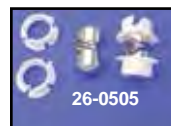
VT No. 31-4040



Brake Cable Clamp is a universal style clamp.
VT No. 26-0508



Cable Clamps are to hand lever for emergency or permanent use. Easy to install .460" diameter. (Pair)
VT No. 26-0509



Lever Pins/Bushings

VT No. OEM Item U/M
26-0505 45036-68 1965-72 with bushings 10
26-2138 45039-68 Nylon bushing 25
26-0506 45033-49 1949-64, with cotter 5
26-2130 45036-82 1982-87 10