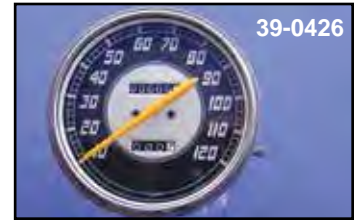
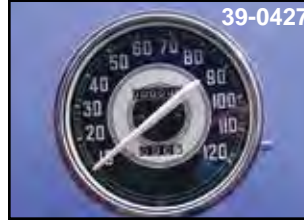
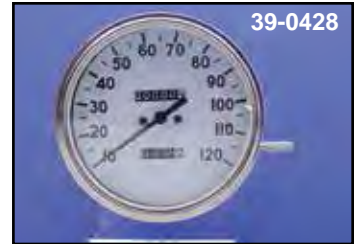
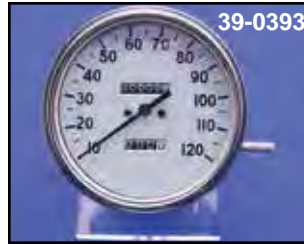


FLH Speedometers have 5/8" male fitting to attach cable as listed.

# Replica Speedometer



**39-0328** 1936-39 White features long style early needle, accepts reset knob VT No. 39-0134.  
**VT No. Ratio**  
**39-0305** 1:1  
**39-0328** 2:1  
**Replica Speedometer**  
**Production since 1983!**  
**Over 50,000 Served!**



**Replica Speedometers** feature glass lens with stainless narrow bezel in 2:1 ratio with a 5/8" male cable fitting. Reset knob included.

VT No.	Year	Needle Type	Glass	Unassembled	Assy
39-0393	1936-39	Black Thin	Flat	39-0480	
39-0428	1936-39	Black Thin	Dome	39-0487	
39-0427	1940-45	White Airplane	Dome	39-0481	39-4045
39-0426	1946-47	Orange Airplane	Dome	39-0482	39-4647

### Silver and Black

VT No.	Ratio
39-0302	1:1
39-0313	2:1
39-0769	1:1
39-0770	2:1

**Silver-Black** (1-12) with silver numerals 1962-67.

VT No.	Ratio
39-0306	1:1
39-0326	2:1

### Speedometer Rim and Lens Installation.

**VT No. 60-0743**

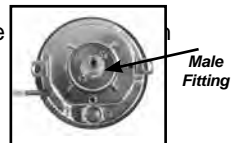


**A-Black 0-120 MPH** and replaces 67004-68A, accepts reset knob 39-0134.

VT No.	Ratio	Face
39-0307	1:1	0-120 MPH
39-0329	2:1	0-120 MPH
39-0375	2240:60	0-120 MPH

**B-Police Special Speedometers** feature white numerals and needle.

39-0671	1:1	0-120 MPH
39-0932	2:1	0-120 MPH
39-0327	2:1	10-100 MPH
39-0862	2:1	0-100 MPH
39-0303	1:1	10-100 MPH
39-0322	1:1	0-120 MPH
39-0375	2240:60	0-120 MPH, 1980-84 FLH
39-0864	2:1	0-100 MPH, Police
39-0857	1:1	0-100 MPH, Police
39-0021	2:1	0-100 MPH, Police



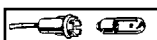
**1948-61 Type Green** features gold backing with green and black. VT No. 39-0301 is green and black on a glass face. VT No. 39-0374 and VT No 39-0993 have a red face.

VT No.	Unassembled	Ratio	MPH
39-0304		1:1	10-120 MPH
39-0861		2:1	10-120 MPH
39-0865		1:1	1-12 MPH
39-0998		1:1	1-12 MPH
39-0301	39-0525	2:1	1-12 MPH
39-0993		2:1	1-12 MPH



**Speedometer Lamp Socket** with bulb replaces 71151-48.

VT No.	Type
33-0531	Vinyl Wire
33-0529	Cloth Wire
33-0133	12 V Bulb
33-0132	6V Bulb
33-3065	Vinyl Wire



**Bob Dash Speedometer Cable** adapts to speedometer with 5/8" large male thread, as used in kits to transmission or front wheel drive.

VT No.	Length	Type	Fits
36-0607	39 1/2"	Front Wheel	All
36-2444	39 1/2"	As Above with Stainless Steel	
36-0126	39 1/2"	As Above with Stainless Clear Coat	
36-0610	42 1/2"	Front Wheel	All
36-2548	42 1/2"	As Above with Stainless Housing	
36-0621	35"	Transmission	1936-80 Big Twin
36-0897		Adapter	Male to Female

**Ratios**  
**2:1 Ratio Bob Speedometers** fit 1936-61 Big Twin transmission drive type 1936-61 45 models and Servi-Car models  
 1:1 Ratio is for 1962-73 Servi-Car, 1962-80 FL-FLH  
 2240:60 1980-84 FLH