



# Oil Filter



**Oil Filter Canister Assembly** replaces 63800-48 on 1948-64 BT models and will accept replica brackets as listed with stock steel oil line and fitting sets. Order brackets, lines and fittings separately from this page. Features slip on hose fittings which can be substituted with screw in fittings to accept metal lines.

- |               |                        |
|---------------|------------------------|
| <b>VT No.</b> | <b>Finish</b>          |
| 40-0095       | Chrome                 |
| 40-0090       | Chrome with Polish Top |
| 40-1948       | Polished "1948"        |
| 40-0982       | Top Fitting            |
| 40-0873       | Fitting                |



- 1948-64 Canister Filter.**
- |               |                  |
|---------------|------------------|
| <b>VT No.</b> | <b>Type</b>      |
| 40-0712       | OE               |
| 40-0715       | Metal Perforated |
| 15-0099       | Seal (40-0715)   |

**Oil Canister Rebuild** includes small parts and gaskets for rebuilding.

- |               |                                  |
|---------------|----------------------------------|
| <b>VT No.</b> | <b>Item</b>                      |
| 15-0616       | Small Parts Kit                  |
| 40-0501       | Center Stud Set                  |
| 12-0164       | 1/4" Steel Ball                  |
| 15-1378       | As Above Molded Rubber           |
| 15-1160       | Filter Gasket                    |
| 15-0099       | Gaskets                          |
| 14-0529       | Oil Line Seals, 10 pack          |
| 40-0943       | Complete Rebuild Kit with filter |



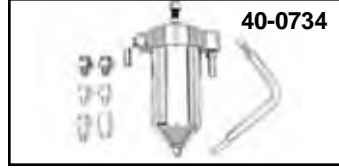
**Finned Oil Filter Canister.** Original design by George Smith, Sr. in the 1950's at S&S Cycle for external filter assemblies.

**VT No. 40-0201**



**Oil Line Fitting Kit** includes four cadmium plated fittings for use with stock lines when an external oil filter is used. Fittings will work with aluminum cover oil pump only.

- |               |                  |
|---------------|------------------|
| <b>VT No.</b> | <b>Fits</b>      |
| 40-0505       | 1940-57 Rigid    |
| 40-0506       | 1958-64 Swingarm |

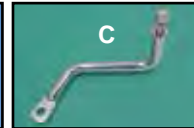
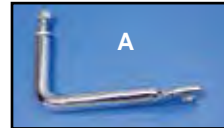
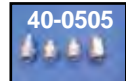


### Oil Filter Kits.

- |  |             |
|--|-------------|
| <b>VT No.</b>  | <b>Year</b> |
| 40-0564  | 1936-47     |
| Includes oil filter assembly with polished top and chrome canister body and zinc plated mount bracket. |             |
| 31-1256  | 1936-47     |
| 40-0846  | 1948-57     |
| 40-0613  | 1936-47     |
| 40-0734  | 1958-64     |

**1940-47 Knucklehead Oil Filter and Bracket Kit.** Order oil lines and fittings separately.

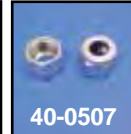
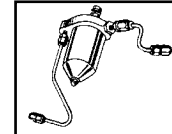
- |               |                       |
|---------------|-----------------------|
| <b>VT No.</b> | <b>Item</b>           |
| 40-0370       | Oil Line Set, Cadmium |
| 40-0107       | Oil Line Set Chrome   |
| 40-0505       | Fitting Set           |
| 40-0201       | Finned Body           |
| 31-1256       | Bracket               |
| 31-1281       | Bracket, 1936-47      |



### Big Twin Chrome Oil Canister Mount Brackets.

- |               |          |             |              |               |
|---------------|----------|-------------|--------------|---------------|
| <b>VT No.</b> | <b>#</b> | <b>Year</b> | <b>Model</b> | <b>Finish</b> |
| 31-4001       | B        | 1948-57     | Rigid        | Chrome        |
| 31-4002       | A        | 1958-64     | Swingarm     | Chrome        |
| 31-4003*      | C        | 1965-84     | FX, FL       | Chrome        |
| 31-4004       | B        | 1948-57     | Rigid        | Zinc          |
| 31-4181       |          | 1958-64     | Swingarm     | Zinc          |
| 31-1281       |          | 1936-47     | Bracket      |               |

\*Notes: Oil lines must be fabricated.



**Oil Filter Canister Line Set** is a two piece line with nuts for rigid and swingarm frames.

- |               |                           |
|---------------|---------------------------|
| <b>VT No.</b> | <b>Item</b>               |
| 40-0106       | Chrome Swingarm Line Set  |
| 40-0371       | Cadmium Swingarm Line Set |
| 40-0107       | Rigid Chrome Line Set     |
| 40-0370       | Rigid Cadmium Line Set    |
| 40-0507       | Nuts only, pair, cadmium  |
| 14-0529       | Rubber Seal, 63529-50     |
| 40-0761       | 1948 Line                 |