



# Star Hub Rebuild



**1936-66 Internal Star Hub Component Kit** includes internal rebuilding parts to assemble a bare hub. Everything pictured except hub. Includes standard rollers. Fits all interchangeable wheels 1936-66 if oversize 9220 series in .0002 to .002.

rollers are needed order from our  
**VT No. Years Finish**  
**44-0413** 1955-66 Chrome  
**44-0431** 1936-54 Parkerized



**Deluxe Star Hub Rebuild Kit** fits 1936-66 interchangeable hubs, includes inner and outer stars, screws, gaskets, thrust washers, outer bearing

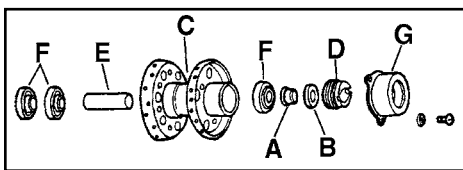
sleeve, snap rings, cork retainer washer and standard rollers.  
**VT No. 44-0414**



**Hub Thrust Plate Kit** includes inner star, grease fitting, and outer chrome or parkerized star. Replaces 43569-55.

**VT No. Finish Fitting**  
**44-0535** Chrome With fitting  
**44-0559** Parkerized With fitting  
**44-0604** Parkerized Without fitting  
**44-0924** Gasket Hardware

## 1967-72 Hub



**Internal Hub Parts** for 1967-72 interchangeable hubs FL-FLH models.

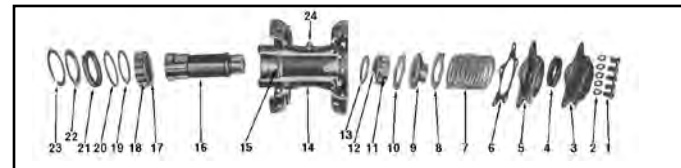
**VT No. # OEM Item**  
**44-0392** A 41196-55 Seal Spacer  
**14-0131** B 41210-55 Seal 5 pack  
**45-0673** C 43540-67C Chrome Hub, Complete  
**45-0306** C 43540-67C Chrome Hub, Bare  
**45-0758** C 43540-67 Black Hub, Bare  
**44-0526** D 43542-67 Locknut (Left Hand)  
**44-0310** E 43549-67 Inner Spacer  
**12-0331** F 43577-67 Bearing, each  
**44-0505** G 43592-70 Cover, Chrome  
**1967-72 Lock Nut and Seal Kit** includes A, B and D.  
**VT No 44-0408**



**Replica Star Hubs** include all internal parts, completely assembled, for front and rear. 45-0799 is bare without internals.

**VT No. OEM Year Finish**  
**45-0330** 43540-36 1941-66 Chrome  
**45-0323** 43540-36 1941-66 Black  
**45-0789** 3958-36 1936-40 Black  
**45-0799** Bare 1936-40 Parkerized  
**45-0806** Chrome 1936-40 Timken  
**45-0807** Black 1936-40 Timken

*V-Twin replicated the "Star" Hub in 1980 with over 11, 000 being produced. All internals interchangeable with original and replaceable with components from our list.*



**Star Hub Components.** Available in packs for 1936-66 hubs. See complete kits on this page for rebuilding.

Index	Application	VT No.	OEM
1 & 2	Thrust Bearing Cover Screws & Lock washers	<b>8200-10</b> <b>8201-10</b> <b>9670-10</b>	Chrome Cadmium Parkerized
3 & 5	Hub Thrust Plate Kit	<b>44-0535</b>	43569-55
3	Star Outer Cover, Chrome	<b>44-0527</b>	43566-35A
3	As above, parkerized with hole	<b>44-2050</b>	43566-35
3	As above, chrome	<b>44-0465</b>	43566-35
4	Chrome Star	<b>44-0458</b>	Without hole
4	Small Cork	<b>15-0350</b>	43570-35
4, 6 & 21	Gasket and Seal Kit	<b>15-0630</b>	
4, 6 & 21	As Above GB	<b>15-0637</b>	
6	Star Gasket	<b>15-0173</b>	43576-35
6	Star Gasket	<b>15-1054</b>	James
7	Thrust Bearing		
	Adjustment Shims (10)	<b>12-0708</b>	43560-35
	.002 Shim	<b>12-0720</b>	
7	.015 Shim	<b>12-9917</b>	(10pc)
8 & 10	Thrust Washer (2)	<b>44-0524</b>	43563-35
9	Thrust Bearing Sleeve	<b>44-0530</b>	43556-35
11 & 18	Bearing Roller Set, 26 required		
	Std. Size	<b>10-0319</b>	9220
	.0002	<b>10-0320</b>	9221
	.0003	<b>10-0339</b>	
	.0004	<b>10-0321</b>	9222
	.0006	<b>10-0322</b>	9223
	.0008	<b>10-0323</b>	9224
	.001	<b>10-0324</b>	9225
	.002	<b>10-0325</b>	
12	Roller Retainer, Small	<b>44-0531</b>	24721-30
13	Roller Retainer Thrust Washer, 1 used, each	<b>44-0523</b>	43552-39
	Wheel Hub Chrome	<b>45-0330</b>	43540-36
	Wheel Hub Black	<b>45-0323</b>	Assembly
14*	Thrust Collar (for aftermarket hub)	<b>44-0534</b>	43561-39
15	Inner Sleeve 1939-up	<b>44-0309</b>	43549-36
16	Roller Retainer, Large	<b>44-0532</b>	43578-35
17	Roller Retainer Washer		
19	1 used, 10 pack	<b>44-0522</b>	43558-39
20 & 23	Lock Ring, 2 used		
	10 pack	<b>12-0921</b>	43554-35
21	Large Cork	<b>15-0631</b>	43571-35
21	Large Cork, James	<b>15-0231</b>	43571-35
22	Retainer, Cork Washer		
	1 used	<b>44-0521</b>	43564-35
	Grease Fitting 10 pack	<b>44-0533</b>	9851

**Note:** 14, Hub is assembled with all internal parts.



**Internal Bearing and Hardware Kit** for 1967-72 front and rear hubs. All parts necessary to build or rebuild a bare hub. Includes three bearings, tube spacer, seal, seal sleeve and hub lock (Left Hand Thread).  
**VT No. 44-0410**