



Spring Fork Top Tree and Riser



Riser Stantion fits Spring Fork top trees with 1" ears to allow rubber mounted glide riser to be fitted with 1 piece for handlebars.

- | VT No. | Item |
|---------|-------------------------------|
| 25-2117 | 3" Glide Risers, chrome, pair |
| 26-2169 | Riser Posts, pair |
| 37-8820 | Bolt Set, pair |
| 25-1166 | 3.5" Offset Riser Kit |
| 49-0093 | Inline Riser Kit |



Chrome Dog Bone Steel Paugcho Riser is machined from solid steel.

- | VT No. | Rise |
|---------|------|
| 25-2158 | 3" |
| 25-2159 | 5" |



Flanders Triple Tree Kit includes zinc plate tree and dog bones.

- | VT No. | Item |
|---------|----------------------------|
| 49-0044 | Inline, brass 4" dog bones |
| 49-0997 | Offset, 5.5" |



Spring Fork Top Tees and Risers. Order pinch bolts for trees separately.

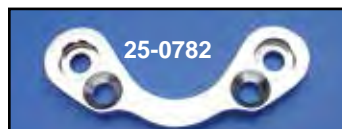
- | VT No. | Item | Finish |
|---------|---------------------------------------|-------------|
| 25-2217 | Dog Bone 5.5" | Chrome/Zinc |
| 25-0950 | Dog Bone Riser Kit, 5.5" | |
| 25-2219 | Dog Bones 3" | Chrome/Zinc |
| 25-2249 | Dog Bones 4" | Brass |
| 25-2124 | Dog Bones 4" | Chrome |
| 25-2253 | Dog Bones 4" | Cast Brass |
| 49-0944 | Top Tree with Ears Inline | Chrome |
| 49-0939 | Top Tree with Ears Inline | Zinc |
| 49-0954 | Top Tree with Ears Offset | Chrome |
| 49-0955 | Top Tree with Ears Offset | Satin |
| 25-2127 | Flanders Risers 4" | Chrome |
| 25-0785 | Flanders Risers 5.5" | Chrome |
| 28-0910 | Flanders Rubber Bushing Set for Above | |
| 49-0315 | Machined Tree without Ears Inline | Chrome |
| 49-0371 | Top Tree without ear Inline | |
| 9217-4 | Pinch Bolts | Chrome |
| 9217-4T | Pinch Bolts | Chrome |
| 9218-4 | Pinch Bolts, 6033-30 | Cadmium |
| 2749-4 | Pinch Bolts, 6033-30 | Parkerized |
| 9508-4 | Pinch Bolts | Parkerized |
| 9508-4T | Pinch Bolts | Parkerized |
| 2750-4 | Pinch Bolts | 1937-39 WL |

These solid brass risers start out as a raw forgings and generally have imperfection on the surface, like forgings voids or pits. These will dull with age, but can be re-polished to a high luster. Brass is soft so be careful, not to dent them with a wrench or hammer.



Screw In Riser Stud installed by threading the I.D. of the upper fork tubes. Use $\frac{3}{16}$ x 16 tap to thread top spring fork holes. Riser studs are $\frac{1}{2}$ x 13 thread to accept riser and $\frac{3}{4}$ x 16 to thread into fork.

VT No. 37-1016 $\frac{1}{2}$ x 13



T-Bar Clamp is used in mounting handlebars with built in risers to custom Paugcho or Wyatt Gatling springers. Use on top of existing top clamp. For replica forks use with top tree 49-0371.

- | VT No. | Item |
|---------|-----------------------|
| 25-0782 | T-Bar Clamp |
| 25-0783 | Mounting Hardware Kit |
| 49-0043 | Kit |



37-1016 Installed by threading upper tubes on forks



Riser Kit Stud Set is installed by tapping top of fork with 20mm original tap. to mount top plate to Springers. install riser bars.

VT No. 49-0763



Chrome Top Tree fits inline forks, allows use of post risers with $\frac{1}{2}$ " mount bolts. Order acorn separately.

- | VT No. | Item |
|---------|-----------|
| 49-0371 | Top Tree |
| 37-0442 | Acorn Nut |