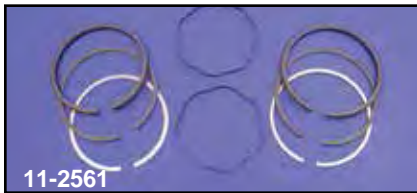




Side Valve Piston Kits



V-Twin Piston Kits include 2 Cast Alloy Pistons, Ring Set, 2 Wrist Pins and 4 Circlips. All Flathead Pistons have a steel expansion control strut cast as original. All 74/80" Flat Heads have steel expansion strut as original.



One Piece Cast Iron Ring Sets for two pistons with one piece oil ring.

Model	45 SV	45 SV	74" SV	80" SV
Comp	2.745"	2.745"	3 ⁵ / ₁₆ "	3 ⁷ / ₁₆ "
Ring	1 ¹ / ₁₆ "	3 ³ / ₃₂ "	3 ³ / ₃₂ "	3 ³ / ₃₂ "
Oil Ring	3 ¹ / ₁₆ "	1 ⁸ / ₈ "	3 ¹ / ₁₆ "	3 ¹ / ₁₆ "
Standard	—	—	11-2537	11-2545
.010	11-2561	—	11-2538	11-2546
.020	11-2562	11-2523	11-2539	11-2547
.030	—	—	11-2540	11-2548
.040	11-2564	—	11-2541	11-2549
.050	11-2565	—	11-2542	11-2550
.060	11-2566	11-2527	11-2543	11-2551
.070	11-2567	11-2528	11-2544	11-2552
.080	—	—	11-2553	11-2554

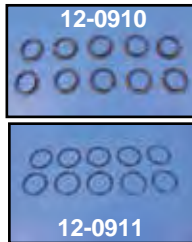
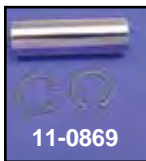
Flathead Size	45" SV 3 ³ / ₃₂ " Top	45" SV 1 ¹ / ₁₆ " Top	74" SV 3 ⁵ / ₁₆ " Bore	80" SV 3 ⁷ / ₁₆ " Bore
STD	11-0400	—	11-0415	11-0408
.010	11-0401	11-0466	11-0416	11-0409
.020	11-0402	11-0467	11-0417	11-0410
.030	11-0403	11-0468	11-0418	11-0411
.040	11-0404	11-0469	11-0419	11-0412
.050	11-0405	11-0398	11-0420	11-0413
.060	11-0406	11-0399	11-0421	11-0414
.070	—	11-0472	11-0422	11-0424
.080	—	—	11-0423	11-0425



The Ring Leader[®]

45" Hastings Rings.		
Model	45" & 55"	45"
	1952-73 G & K	1937-52 G & W
	2 ³ / ₄ "	2 ³ / ₄ "
Comp Ring	1 ¹ / ₁₆ "	3 ³ / ₃₂ "
Oil Ring	3 ¹ / ₁₆ "	1 ⁸ / ₈ "
Mfg.#	4244	5044*
Standard	11-0144	11-2529
.010	11-0145	11-2530
.020	11-0146	11-2531
.030	11-0147	11-2532
.040	11-0148	11-2533
.050	11-0149	11-2534
.060	11-0150	11-2535
.070	11-0151	11-2536

*Note: Features One Piece Oil Control Ring



Wrist Pin and Lock Kits.

VT No.	OEM	Year/Model
49-7606	22775-36	1936-48 Big Twin Side Valve
49-7608	.002 Oversize	1932-51 45 SV
11-0869	22719-52	1952-73 45 SV
Wrist Pin Locks, 10 packs.		
12-0910	22581-32	1932-53 All Twins
12-0911	22582-52	1952-77 All Twins



Cylinder Base Nuts include washers.

Chrome	Cadmium	Parkerized	Fits
7017-16			1936-78 Big Twin, Acorn (A)
8104-16	8105-16	9623-16	1936-78 Big Twin (B)
8106-16	8107-16	9624-16	45's (B)
9715-8	8171-8	9716-8	7 ¹ / ₁₆ " Lockwashers (B), 8 pack



Cylinder Base Studs feature heat treating and interference thread at cylinder base. Sets of eight.

VT No.	OEM	Year	Fits
8856-8	16831-30	1930-77	74" and 80"
12-2100	16831-30	1930-77	74" and 80"
12-1192	16830-29	1929-73	45"

Big Twin Side Valve Cylinder Sets are available to fit both 74" and 80" side valve motors. Sold in sets only. These cast iron cylinders are ready to be fitted with pistons. Thirteen fin style cylinders that have valve guides and intake manifold nipples installed. Kit includes standard piston kit pre-fitted to cylinder bore size.

Set	Size	Kit
49-0685	74"	49-1385
49-0686	80"	49-1386



Replica Cylinder Sets include front and rear cylinders. 49-0378 WL includes pistons and rings.

VT No.	Type	Guides
49-0378	WL	Yes
49-0193	W	No, Front



45" Top End Kit includes 45 valve cover kit, 45 lifter kit, valve spring kit, front & rear 45 cylinder, 2 Sifton intake valves, 2 Sifton exhaust valves, high compression head, gasket kit, headbolt kit, and washer kit.
VT No. 49-0865

CLASSIC