



Side Valve Valves and Guides



11-0600

Valves			
Model and Year	Type	OEM	Steel
VL-74	Intake	163-30	11-9647
UL-ULH-74 & 80	Intake	18070-37	11-0600
1937-48	Exhaust	18082-37	11-0611
45 cubic inch	Intake	18070-32	11-0601
1932-73	Exhaust	18080-32	11-0612

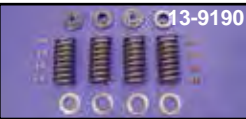


11-0792

Cast Iron Guides			
Model and Year	Intake	Exhaust	
45" Flathead 1929-73			
Standard	11-0792	11-0792	
+002	11-0822	11-0822	
+004	11-0823	11-0823	
UL & ULH Flathead 74" & 80"			
Standard	11-0793	11-0793	
+002	11-0825	11-0825	



GB Valve Guide Gaskets, 20 pack. Replaces 18198-38. Fits Side Valve/1929-73.
VT No. 15-0256



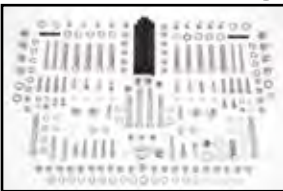
Valve Spring Kits include all springs, collars and keepers necessary for each application.

VT No.	Model	Year	Item
13-9188	45"	1932-40	Kit
13-9189	45"	1941-73	Kit
13-9190	74-VL	1930-36	Kit
13-9191	74 and 80 UL-ULH	1937-48	Kit
11-0657	UL	1930-48	Collar Kit Only

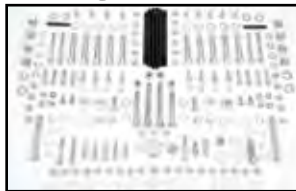
Valve Spring Sets Only, Set of 4

VT No.	Year	Model
13-9153	Big Twin Side Valve	1930-48
13-9155	45 Side Valve	1941-73
13-9214	45 Side Valve	1930-40

Bolt Kits



Chrome



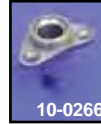
Cadmium

Stock Style Hardware Kit contains all the stock engine nuts, bolts, washers and studs for your engine in choice of chrome or cadmium plating. Kit includes primary cover screws, lifter base screws, circuit breaker screws, case studs and nuts, timing plug, cam cover screws, cylinder base nuts and washers, oil pump nuts and bolts, trans side cover nuts and washers, transmission top screws, transmission fill plug, generator screws, head bolts and washers. For 1948-64 Panhead Kits, order proper length Panhead cover screws separately.

Chrome	Cadmium	Year	Model
8304 CHR	8304 CAD	1936-39	74 and 80 Side Valve with Cast Iron Heads
8305 CHR	8305 CAD	1940-48	74 and 80 Side Valve with Cast Iron Heads
—	8306 CAD	1940-48	74 and 80 Side Valve with Aluminum Heads
8308 CHR	8308 CAD	1937-73	45 with Cast Iron Heads
8309 CHR	8309 CAD	1937-73	45 with Aluminum Head



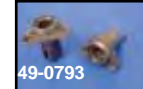
Tappet Set with lifter bases fits 1929-73 45's.
VT No. 49-0850



10-0266



49-0797



49-0793

45 and Big Twin Side Valve Steel Lifter Base.

VT No.	Fits	Type	Qty
49-0793	Front	Thread	Set
49-0797	Rear	Thread	Set
10-0234	Rear 45"	Thread	Each
9622-16	Screw	Parkerized	Set
8103-16	Screw	Cadmium	Set
8102-16	Screw	Chrome	Set



10-0567

Side Valve Tappet Assemblies to fit 45, UL and K-Model Side Valves. Include roller assembly installed. Choose Jims or Sifton "Lightning brand". Jims does not include adjuster screws or nuts where necessary.

Replaces 18490-29.10-0567 does not include screws.

Big Axle Jims	Standard Sifton	Size	U/M
—	10-0567	Standard	Set
10-0651	10-0506	Standard	Each
10-0652	10-0507	.005	Each
—	10-0528	.010	Each
—	10-0989	.005	Set
—	10-0990	.010	Set



10-0543

1930-73 Side Valve Tappet Adjuster Screw Kit for Flathead includes 4 screws and 4 matching lock nuts.

VT No.	OEM	Item
10-0543	Kit	V-Twin
12-0523	18570-38	Nut (10)
10-0519	18556-40	Screw (4)
2779-8	Kit	Colony
10-0519	18556-40	Screw (4)



45 Wrap Around Tank. Front mounts to clutch cable frame mount and rear frame fender cross brackets.
VT No. 40-0964



Tappet Roller Repair Kit includes 4 pins and 4 roller assemblies. Use tool VT No. 16-0874 for accurate removal and reassembly.

VT No.	Type
10-0520	18534-29A, 1929-84
12-1179	Pins Only, 10 pack



Set of 45 Frame Castings includes all drop forged frame parts to build your own WL model race frame. Fits 1936-1952 W.
VT No. 49-2522