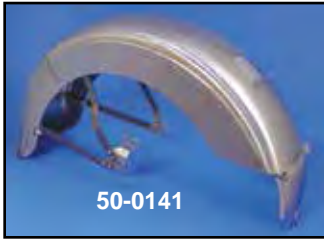




# Fender

Note: All Items Shipped with a Raw Finish may have some oxidation (rust on surface)!



50-0141



50-0179



50-1053



50-1159



50-0168

## 45" Solo Fender.

VT No.	Item
50-0141	1936-52 with Narrow Braces
50-0179	1936-52 with Narrow Braces
50-0168	1936-52 Skirt Set Only
50-1053	1949-57 only
50-1159	1936-52 Bobbed
50-0771	Army Rear
50-0931	Hinge and Pin
37-8840	Pin
50-0553	1934-46 Rear Tail Bracket
50-0557	Rear Brace V
50-1207	Fender Pieces



**Rigid Rear Fender Mounting Kit** includes hardware to install rear fender on 1929-52 45's.

45 Solo	Finish
9791-15	Cadmium
9790-15	Chrome
9792-15	Parkerized



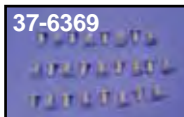
50-0914

**Stainless Fender Trim** for 1939-48 Big Twin and 45", 1940-49 Spring fork front Includes clips.

VT No.	Fits
50-0914	Front
37-8458	Clips, 25 pack



37-6368



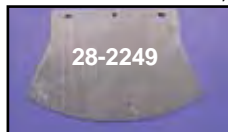
37-6369



37-6370

**Replacement Fender Rivets** fit all FL front and rear fenders and FX front fenders, pack of 25.

VT No.	Fits
37-6368	Big Twin Fender Brace
37-6369	Big Twin Fender Top
37-6370	FX Front, 1973-up Stainless



28-2249

**Early Mud Flap** replaces 59235-26 in rubber with laminated cloth construction.

VT No.	Item
28-2249	Mud Flap
49-0425	Mount Hardware

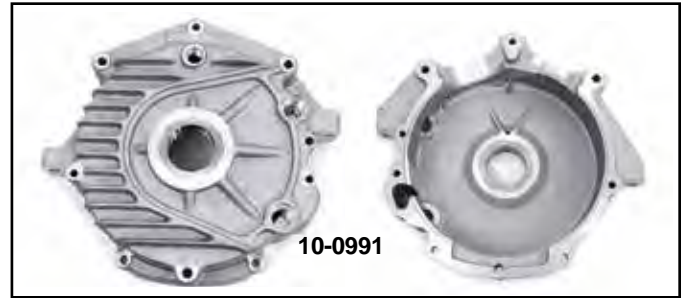


45-0102

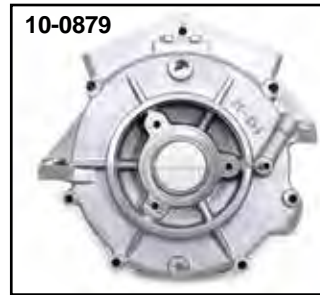
**WR Spool Front Wheels** available in 18" and 19" with 2.15" width rim and 6-8 gauge spokes. Hub is nickel plated, spokes are stainless, rim is black. Hub has retro fitted with sealed ball. Bearings to accept a 3/8" axle.

WR Front Spool Wheel.	52-0305	18" Rim
VT No.	Size	52-0025
52-0013	18"	45-0107
52-0014	19"	Hub Rear
45-0102	Hub Front	

# Case



10-0991



10-0879



10-0879



10-0953

**Left Cases** are without serial numbers.

VT No.	OEM	Fits
10-0991	406-37A	WL
10-0879	24536-37	UL
10-0953	Set	UL



50-0144



50-0778



50-0454



50-0750



50-0523

**Spring Fork Front Fenders** are 7½" wide for 16" or 18" wheels with riveted on wide braces. The 45" type fits with rockers inside the fork. Big Twin fits with outside rockers.

VT No.	Year/Model
50-0144	1936-48 Big Twin
50-0750	1936-46 Big Twin
50-0778	1936-52 45"
50-0454	1936-52 45"
50-0523	1949-52 45"
50-0643	1934-35 VL
50-0463	1934-35 DL