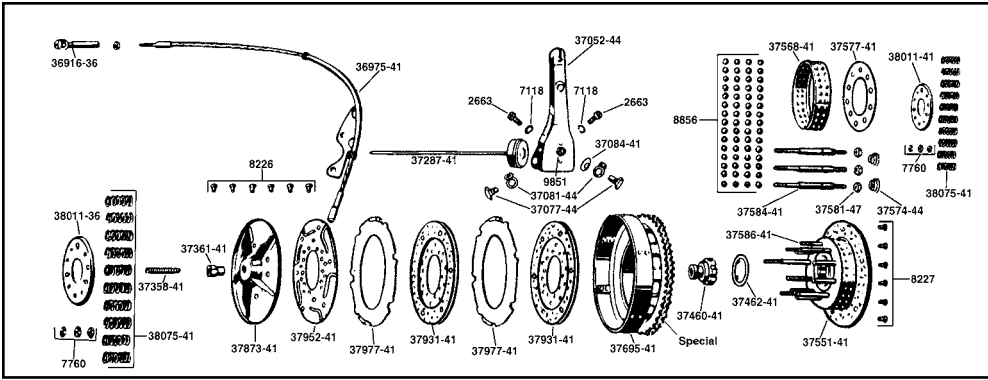




# 45" Model Components



16-0960



**45" Main Drive Gear Seal**  
Installer replaces 12747-41.  
VT No. 16-0960



**Clutch Hub Nut Tool** installs and removes nut. Fits 1931-73 45".  
VT No. 16-0823

## 45" Clutch Hub Related Parts for 1941-73 Solo and Servi-car.

VT No.	OEM	Year	Item
49-0933	36916-36	1936-73	Cable End, Zinc
18-8304	36916-36	1936-73	Cable End, Cadmium
49-0046	36916-36	1936-73	Cable End, Parkerized
49-0160	36975-41	1941-73	Cable Assembly Parkerized
13-0743	36882-47	1941-73	Servi-Car Clutch Cable Spring
49-0126	—	As above	Chrome
49-0148	37052-44	1944-73	Clutch Arm, wide
8920-3	Rebuild	All models	Fulcrum with rivets
8904-6*	37076-41	1941-43 Solo	Pivot Arm Bolt Kit
	1941-73 Servi-Car		Cadmium
9709-6*	As Above	Parkerized	
2639-1	37867-41	1941-73 45"	Clutch Lever Grease Fitting
8410-8*	37077-44	1944-52 Solo	Pivot Arm Bolt Kit Chrome
8411-8*	As Above	1944-52 Solo	Cadmium
8412-1	37287-41	1941-73	Throw Out Bearing Assembly
18-0126	37287-41	1941-73	Throw Out Bearing Assembly
18-0127	—	1933-40	Throw Out Bearing Assembly
14-0126	37335-41	1941-73	Pushrod Seal Kit
12-0541	37358-41	1941-73	Adjuster Screw

## 45" Clutch Related Parts for 1941-73 Solo and Servi-Car.

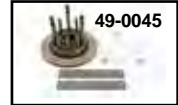
VT No.	OEM	Item
12-0514	37361-41	1941-73 Adjuster Nut
12-0556	37460-41	Hub, nut
17-0925	37462-41	Lock Tab
17-1925	—	Lock Tab
9533-2	—	Hub Nut with Lock
49-0088	—	Clutch Hub Complete
49-0061	37551-41	Hub, without bearings
49-0045	—	Clutch Hub with rollers
18-3674	37568-41	Ball Retainer with balls
18-3700	—	Retainer Only
18-3675	37577-41	Bearing Plate
18-3685	37584-41, 37586-41	Clutch Stud Set
18-3127	37586-41	Short Stud Set
18-3678	37590-41	CH. Liner with rivets
18-3224	37695-41	Clutch Drum
18-3703	37695-64	Clutch Drum, electric
18-3225	37713-69	Ring Gear without rivets
18-3227	—	Rivets, may be shortened for use on early drums. Chain wheel must be riveted to clutch shell
18-3673	37873-41	Releasing Disc
18-1137	37952-41	Replica Clutch Set
	37931-41	
18-1123	As above	Barnett Clutch Set
18-1128	37977-41	Steel Plate with rattlers
18-3672	38011-41	Pressure Plate
13-0139	38075-41	1941-73 All Clutch Springs
49-0983	Kit	Clutch Hub Bearing Kit
49-0474	Kit	Clutch Hub Nut



49-0088



18-3672



49-0045

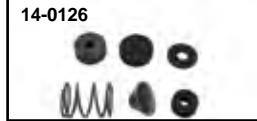


18-3703



**Replica Clutch Kit** for 1941-73 45's is riveted to steel plate just like original. Consists of two full plates and one 1/2 plate, also available bonded to alloy by Barnett.

VT No.	Item
18-1137	Friction Set (3 piece)
18-1128	Steel Drive, each
18-1123	Barnett Friction Set
18-1737	Kit, Complete
18-0451	Friction Plate (2)



14-0126

## 45" Clutch Arm

49-0491	1941-43
49-0148	1944-73



**45" Big Fixx Kit** includes long rollers to replace ball bearings and cage on clutch hub.

VT No.	Item
18-0230	Kit
49-0855	Plate

**45" Pushrod Seal Kit** includes all parts pictured.

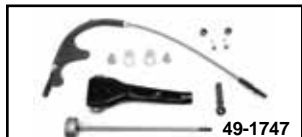
VT No.	Item
14-0126	Complete Kit
13-0229	37347-42 Spring Only



49-1682



49-1678



49-1747



49-1672

## Servi Car Clutch Cable Components.

VT No	Item	Finish
49-1747	Cable Kit	
49-1672	Cable 1958-73	Parkerized
49-0126	Cable Chrome	
49-1723	Cable End	Parkerized
	1/4" x 24	
13-0743	Cable Spring	
49-1682	WR Clutch Parkerized Pedal Kit	
49-1278	Chrome Clutch Pedal Kit	
49-1272	Clutch Pedal Kit, w/o cable	



**Throw Out Arm and Bearing Kit.**  
VT No. 49-1725



49-0983



49-1725



49-1722



49-0491



49-0295



49-0148

## 45 Clutch Arms.

VT No	Item
49-1725	Throw Out Kit
49-1747	Throw Out Kit (Servi Car)
49-1722	Clutch Arm Kit (W)
49-0491	Narrow Clutch Release Arm
49-0295	Clutch Release Arm, 1941-1952 W
49-0148	Clutch Release Arm, 1944-52 WL



49-0172



49-0269

**45 Transmission Case,** bare case.

VT No	Type
49-0172	Replica
49-0269	OEM