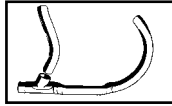




45" Side Valve Exhaust

30-0640



45 Cubic Inch 2 Piece Header Set for 1937-73 Solos and Servi-Cars.

Replica	Type	Model
30-0640	Kit	Solo
30-0622	Black/Raw	Solo
30-0630	Chrome	45"
30-1273	Black/Raw	Servi-Car
30-1274	Chrome	Servi-Car
30-0459	Flex Tube	All
30-1399	Chrome	Rear Pipe
30-0671	Black	Servi Car

30-0936



Black Turnout Pipe. Fits 1930-52 WR.

VT No.	Item
30-0936	Exhaust Pipe End
30-0937	WRTT Long Style Exhaust Extension

30-0937



45 Military Stock Replacement Muffler fits 1940-45.

VT No.	Finish
30-0184	Black
30-0862	Chrome



45 Civilian Muffler.

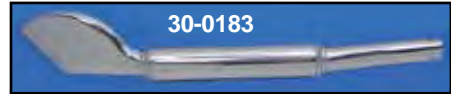
VT No.	Year	Finish
30-0185	1950-52	Black
30-0192	1950-52	Chrome

30-3100



32" Chrome 1 1/2" Drag Pipes. Order P-Clamps separately. Fits 1929-73 45" S.V. Pipe P-Clamps 30-3100 31-2100

30-0183



45 Civilian Stock Replacement Muffler replaces 1035-41. Stock on 45's 32-49.

VT No.	Type
30-0182	Black
30-0183	Chrome

30-0251



Servi-Car Muffler for 45" Servi-Cars.

VT No.	Type	Year
30-0186	Black/Raw	1936-73
30-0251	Chrome	1936-73
30-0020	Black Replica	1936-73
30-0418	Black	1932-35

Antique Pipe Sets sold as raw or painted with black primer as a rust preventive measure only after manufacturing. We do not guarantee black finish for surface finish or ability to withstand heat. We suggest that the pipes be repainted with our heat proof VHT finish.

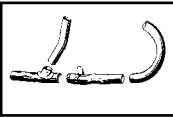


Batique Pipe End fits over 1 3/4" exhaust tube. Sold each. VT No. 30-0793

Big Twin Side Valve



29-1103



29-1103 Installed



UL-ULH Exhaust System available in 3 or 4 piece. The 3 piece style uses the muffler with built-in "Y" (30-0165, 30-0166), the 4 piece style uses standard 1 3/4" inlet mufflers (30-0163, 30-0164). The three piece is stock on 1937-40, four piece on 1941-48.

VT No.	Finish	Pieces
30-0167	Black	3
30-0168	Chrome	3
29-1103	Black	4
29-1104	Chrome	4

Note: Three and Four Piece Replica Exhaust Systems require hand fitting during final assembly. We suggest to loosen motor mount bolts during installation to allow pipes to adjust to motor position then re-tighten engine bolts.



30-0164



30-0880

Replacement Muffler replaces 65251-41. Fits all 1941-49 FL, EL, UL.

VT No.	Finish	Bolt Kit
30-0163	Black	2719-22
30-0164	Chrome	2772-22
30-0880	Black, Replica	
30-0884	Chrome, Replica	

30-3125

Big Twin SV 1 3/4"



36" Chrome 1 3/4" Drag Pipes. Order P-Clamps separately. Fits 1936-48 Big Twin Side Valve.

Pipe	P-Clamps
30-3125	31-2101

Side Valve J.D. Exhaust Parts

VT No.	Item	Year
9209-1	Nipple	1924-29
9210-1	Nut	1921-29
49-0168	Header Pairs	1915-24
49-0169	Header	1925-29



30-0166



UL Stock Replacement Muffler With Built-In Y-Pipe. Replaces 65201-37. Used on all 74-80 side valves 1937-40 and 1936-40 Knucklehead.

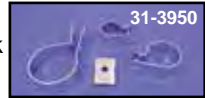
VT No.	Type
30-0995	Black, Replica
30-0165	Black
30-0166	Chrome
30-0995	Replica
30-0996	Replica, Chrome

Exhaust Pipe Clamp

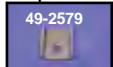
Sets complete in black or chrome for single exhaust. Number of clamps in each kit shown.

Chrome	Black	Year	Model	#
31-3950	31-2125	1936-40	Knucklehead	3
31-3953	31-2128	1937-40	ULH	3
31-9003	31-9004	1941-48	ULH	4
31-3956	31-2130	1936-51	45's	4
2772-22	2719-22	1936-57	BT Bolts	
31-9010		1951-73	Servi Car Clamp	
31-9011		1951-73	Servi Car Bracket	
31-1261		1951-73	G Clamp	

31-3950



49-2579



Rear Hanger Reinforcement Clip braces rear muffler clamp at mount bolt. Body clamp not included.

VT No.	Fits	Finish
49-2578	1936 EL, 1937-40 UL	Black
49-2591	1936 EL, 1937-40 UL	Chrome
49-2579	1065-41 1941-47 FL	Black
49-2592	1065-41 1941-47 FL	Chrome