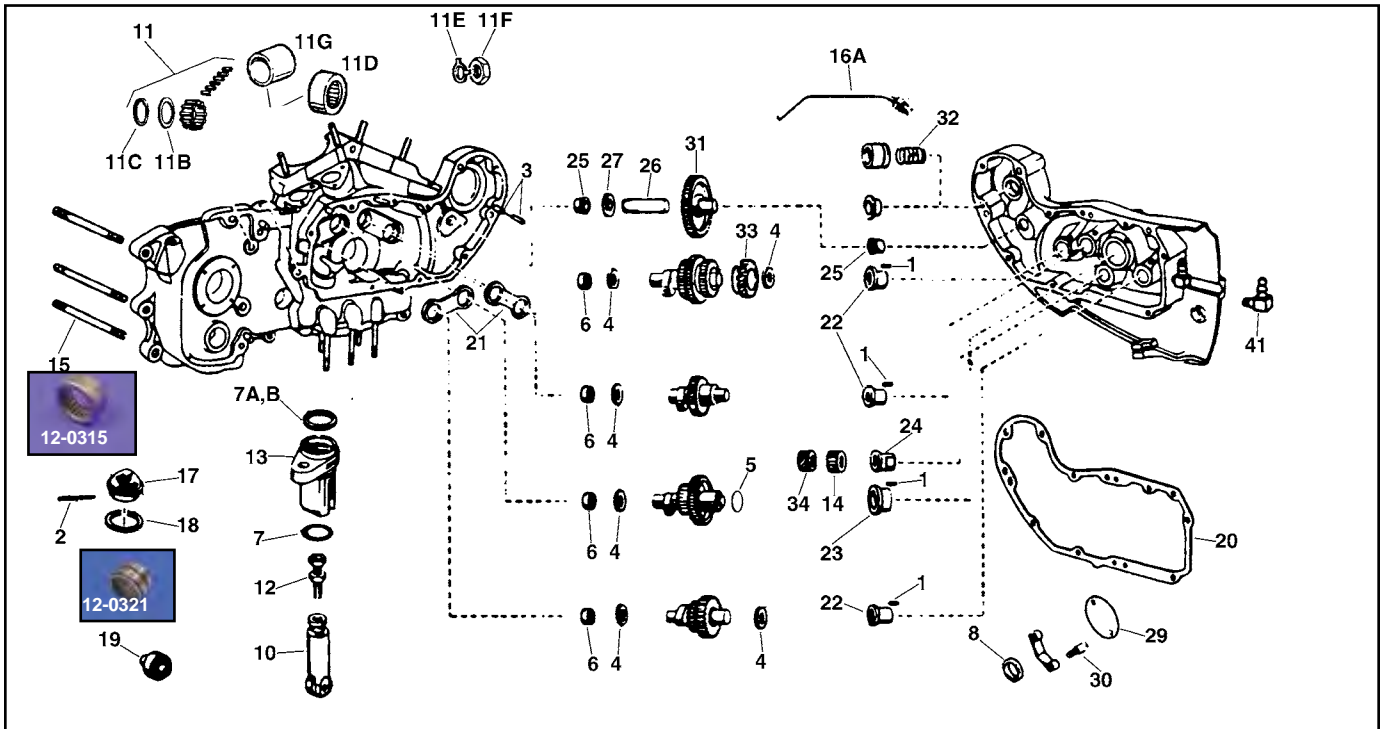


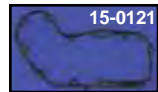


Pinion Parts



VT No.	#	OEM	Description	Year
12-1184	1	275	Pin Bushing	1954-90
12-1173	2	333	Pin, Strainer	1952-76
12-1172	3	375	Pin, Casing	1957-76
12-0705	4	6769	Shims Cams .007	1952-85
12-0706		6770	As Above .005	1952-85
12-0716		6771	As Above .015	1952-85
12-0717	5	6773	Shim #2 Cam .005	1952-85
12-0718		6775	As Above .010	1952-85
12-1258		6778	As Above .015	1952-85
12-0315	6	9057	Bearing Cam	1952-90
10-2552	6	25598-91	Bushing Cam	1991-up
14-0500	7	11100	O-Ring Block	1952-85
14-0501	7A	11101	O-Ring Pushrod	1979-85
15-0116	7B	17955-36	Cork, Pushrod (12)	1952-E79
14-0100	8	11124	Seal, Cam Cover	1957-up
10-0502	10	18508-52B	Cam Follower Standard	1957-86
10-0503		—	Cam Follower .005 Oversize	1957-86
10-2536	11	—	Pinion Bearing Kit	1954-76
10-1154	11B	24692-54	Washer	1954-76
12-0913	11C	24701-54	Ret. Ring	1954-76
12-0321	11D	24648-77	Bearing	1977-84
10-2531	11G	24009-77	Race	1977-84
17-0918	11E	7044A	Lock	1979-up
12-0536	11F	7913	Nut	1977-90
12-0577	11F	7916A	Nut	1991-up
10-0517	12	18554-57	Tappet Adjusters	1957-85
10-0522	13	18607-57A	Tappet Block (Jims)	1957-85
10-0182	13	18607-57A	Tappet Block Set	1957-85
12-1394	14	24011-37	Pinion Gear	1957-76
12-1473	14	24011-37	Pinion Gear	1957-76
Note:	14	24059-74	Pinion Gear See Chart	1977-up
12-1151	15	24817-52	Stud (3) Casing	1954-81
12-1150	15	24825-82	Stud (3) Casing	1982-up
40-0121	16A	24912-52A	Breather Pipe Chrome	1954-82
12-1512	17	24975-37	Oil Stainer	1954-72
12-1511	19	25075-55	Breather Valve	1952-76
15-0121	20	25224-52	Gasket, Cam Cover	1952-81
15-0124		25263-81	Gasket, Cam Cover	1981-85
15-0245		25263-86	Gasket, Cam Cover	1986-90
17-0921	21	25551-58	Cam Thrust Plate	1958-90
10-0709	22	25586-37	Bushing Cam	1952-up
10-2540	22	As Above	.005 Oversize	1952-up
10-0710	23	25588-57	Bushing #2 Cam	1952-90
10-2541	23	As Above	.005 Oversize	1952-90

VT No.	#	OEM	Description	Year
10-8538	23	25588-91	Bushing #2 Cam	1991-up
10-0712	24	25593-57	Bushing Pinion	1957-76
10-2544		As Above	.005 Oversize	1957-76
10-0713	24	25593-74	Bushing Pinion	1977-up
10-0715	25	25597-57	Bushing Idler	1952-85
10-2546	25	As Above	.005 Oversize	1952-85
10-2499	26	25787-57	Stud, Idler Gear	1957-85
15-0217	27	25811-11	Washer, Idler Gear	1957-85
10-0197	26 and 27	—	Idler Stud Kit	1957-85
N/A	29	32591-70	Gasket, 2 Hole	1970-79
15-0156		32591-80	Gasket, 4 Hole	1980-95
32-0051	30	32601-78	Stud, Ignition	1972-79
12-1451	31	25776-57	Idler Gear	1957-84
13-0106	32	25287-37	Breather Spring	1957-62
12-1400	33	25517-71	Tach Drive Gear	1971-80
12-1290	32A	25265-63	Breather Deflector	1963-78
12-0421	34	26818-37	Oil Pump Drive Gear	1957-76
12-1380	34	26318-75	Oil Pump Drive Gear	1977-87
12-1377	34	26318-88A	Oil Pump Drive Gear	1988-up
17-0519	41	62375-57	Vent Hose Fitting	1970-up
12-0215	42	11219	Oil Pump Drive Key	1988-99
12-0213	43	11204	Rear Intake Key	1980-85



15-0121 Cam Cover Gaskets.

GB No.	James	OEM	Fits
15-0214	24978-57	—	1957-81 Oil Strainer
15-0564	—	Pair	1954-Early 81 Cam Cover
15-0121	15-1078	25224-52A	1954-Early 81 Cam Cover
15-0124	15-0931	25263-81	1982-85 Cam Cover
15-0245	15-0932	25263-86	1986-90 Cam Cover
—	15-1255	As Above	With Silicone Bead
15-0308	15-1256	As Above	1991-99 Cam Cover With Silicone Bead
—	15-0933	25263-90A	2000-up Cam Cover
15-0385	15-1223	25263-00	2000-up Cam Cover w/Bead



Quick Change Cam Gear Gasket and Seal Kit fits XL and Evolution motors, includes both cork and quad seals for pushrods to fit all year range.

GB No.	Year	GB No.	Year
15-0752	1957-81	15-0755	1991-99
15-0753	1982-85	15-1265	2000-03
15-0754	1986-90	15-1266	2004-up

Cam Cover Screws for Sportster

Chrome Acorn	Chrome Allen	Cadmium Stock	Chrome Stock	Year
—	—	8895-9	8894-9	1954-70
—	8783-8	2062-8	2061-8	1971-84
8865-11	9751-11	—	—	1986-2003
—	9751-11T	—	—	1986-2003
—	37-1202	—	—	2004-up
—	2222-11	—	—	2004-up