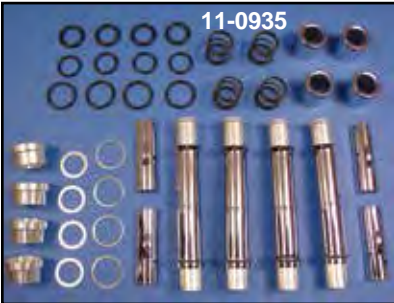




11-0905



11-0933



11-0935



11-1205



11-0941

**Chrome Pushrod Cover Kits** include all pieces and seals.

VT No.	Years
11-0905	1957-Early79
11-0937	Late1979-85
11-0933	1985-89
11-0935	1990-2003
11-1205	2004-up
11-0930	Adapts 11-0933 to 1990-up
11-0941	1990-2003 one piece design
11-1965	2004-up one piece design

**Pushrod Cover Components** fit 1957-85.

Colony	V-Twin	Item	Fits
7507-20	11-0929	Upper Kit	1957-85
9887-20	—	Upper Kit	1986-90
—	11-0916	Clip Only (4 piece)	1957-85
—	11-0932	Clip Only (4 piece)	1986-89
7808-4	—	Inner Tube	1957-78
—	11-0908	Inner Tube	1979-85
7822-12	11-0923	Lower	1957-78
—	11-0936	Lower	1979-85

# Pushrod Cover Set



11-0944

**Billet Pushrod Cover and Mount Base Set** allows adjustable covers to be used on 1991-2003.

VT No.	Item
11-0944	Complete Kit
14-4171	Lifter Base Seal Kit



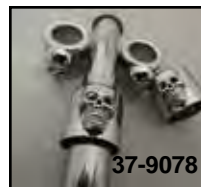
37-9078



37-9079



11-1073



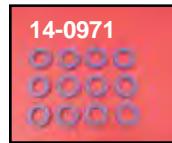
37-9078



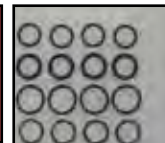
37-9078

**Pushrod Cover Cups** feature die-cast construction in chrome or gold, set of four.

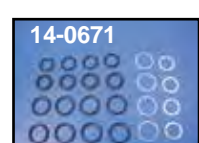
VT No.	Item
37-9078	Chrome Skull
37-9079	Gold Skull
11-1073	Brass Hex



14-0971



14-0951



14-0671

**Pushrod Cover Cork-Seal Kits** include enough pieces to seal 4 complete pushrod covers on years listed. Available in cork, OEM-type Quad, or Buna-N machined rubber seals.

James	GB No.	Type	Fits
14-0668	15-0626	Cork	1957-79
14-0670	14-0953	Quad	1979-84
—	14-0971	Rubber	1957-79, Blue Silicone
14-0671	14-0951	Rubber	1986-89
14-0672	14-0952	Rubber	1991-up XL 883 1200 Evolution
—	8729-12	Rubber	1957-79 (Colony)

**Pushrod Tube Seals.**

VT No.	OEM	Type	Years
14-0501	11101	Lower	1979-85
14-0512	11132	Middle	1979-90
14-0550	11145	Lower	1986-90
14-0532	11157	Upper	1984-90
14-0912	11190	Upper	1991-up
14-0935	17944-89	Lower	1991-03